

Customer Information Sheet

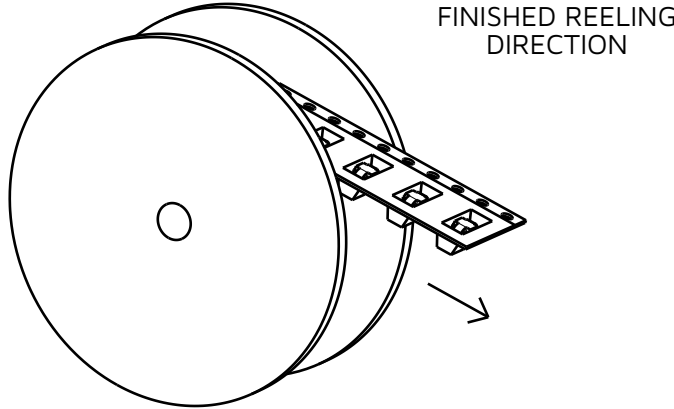
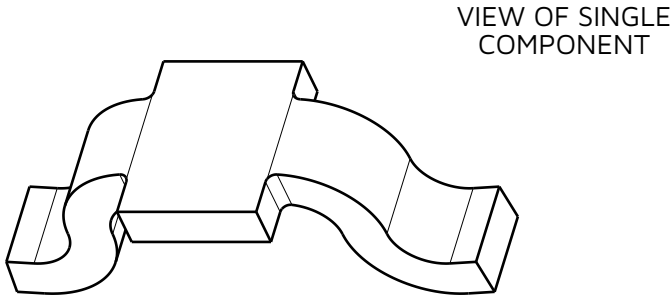
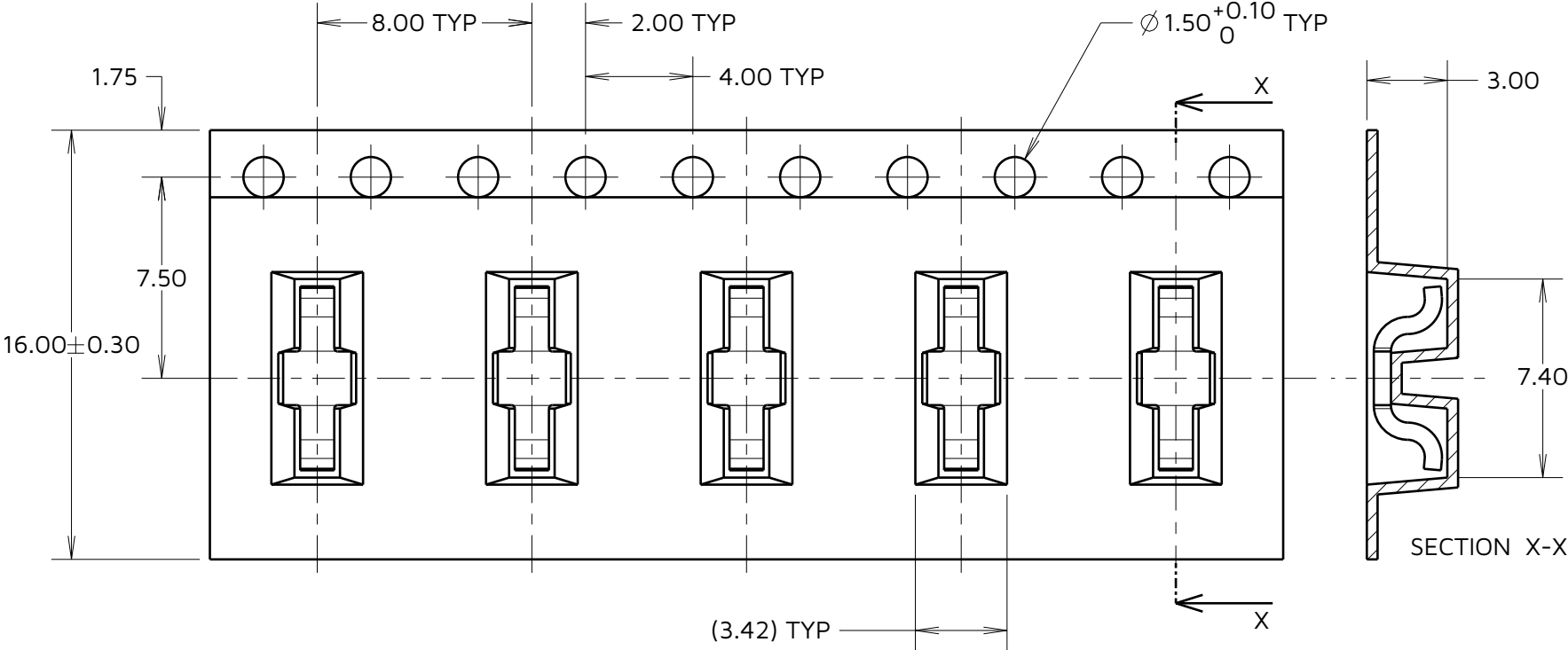
IF IN DOUBT - ASK

©

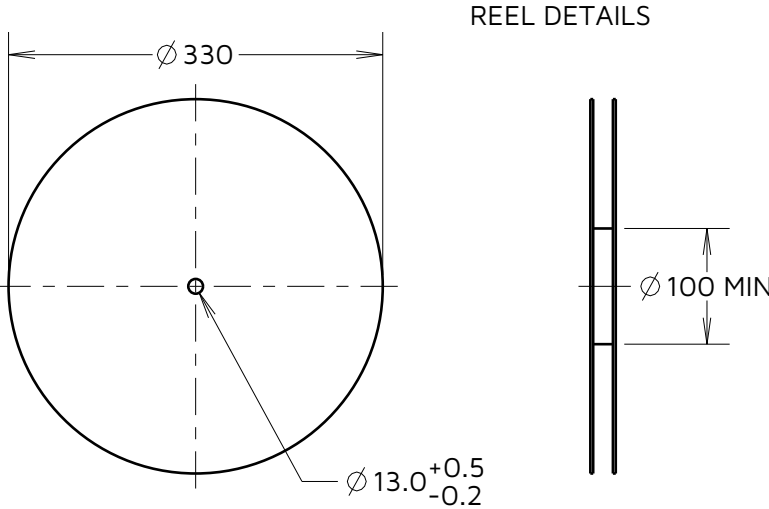
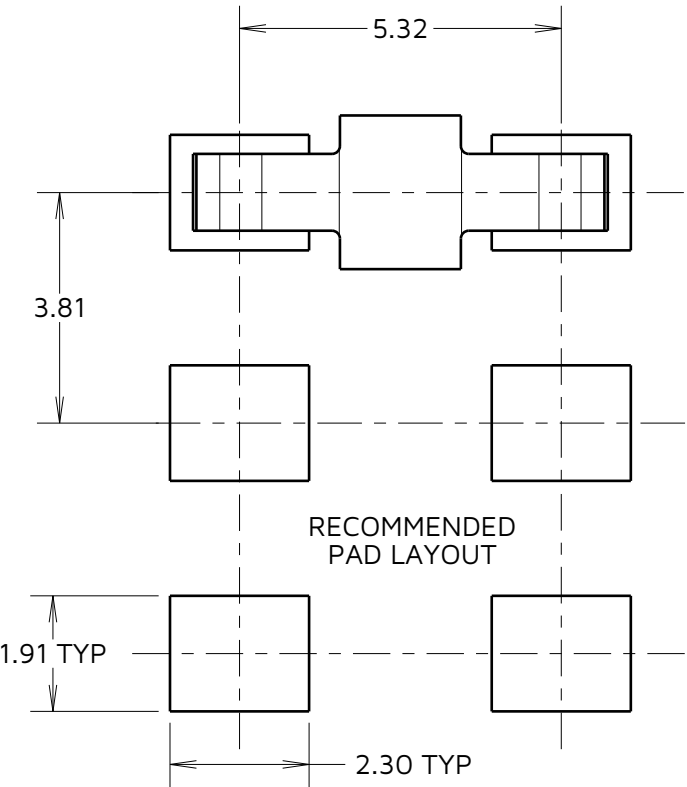
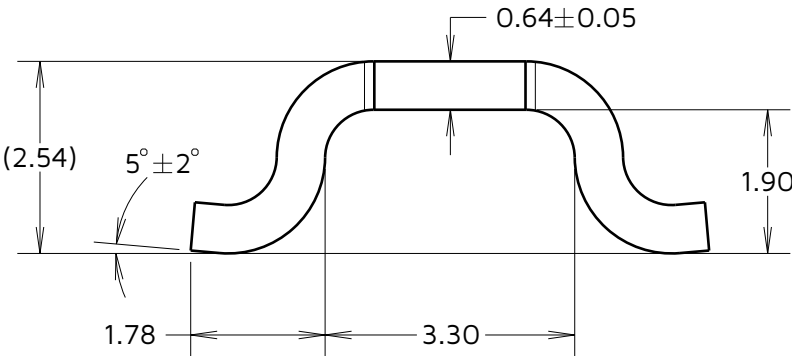
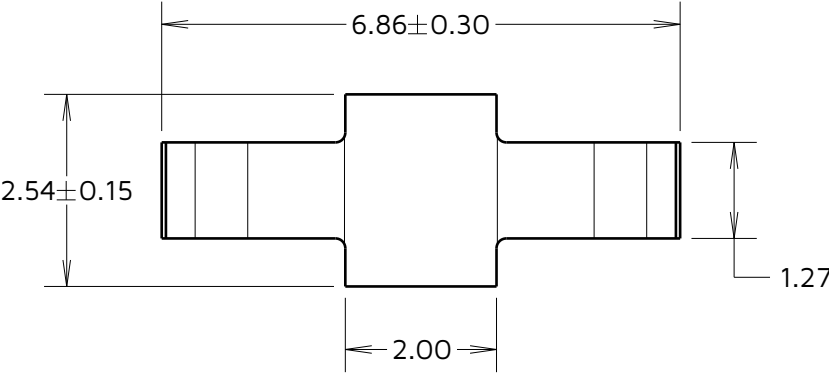
NOT TO SCALE

THIRD ANGLE PROJECTION

ALL DIMENSIONS IN mm



SINGLE COMPONENT DIMENSIONS



COMPONENT SPECIFICATION:
MATERIAL = CW004A ETP COPPER
FINISH:
46 = 100% TIN OVER NICKEL
ELECTRICAL:
CURRENT RATING = 10A (30°C TEMP RISE)
CONTACT RESISTANCE = 20mΩ MAX
ENVIRONMENTAL:
OPERATING TEMPERATURE = -40°C TO +125°C

EM	8	11.09.24	34739
NAME	ISS.	DATE	CN/CO
APPROVED:		E. MUNOZ	
CHECKED:		A. BOXALL	
DRAWN:		M. G. PLESTED	

NOTES:
1. QUANTITY PER REEL = 2,500.
2. THIS PRODUCT IS TAPED AND REELED IN ACCORDANCE WITH EIA-481 (ELECTRONIC INDUSTRIES ASSOCIATION).



TOLERANCES
X. = ±1mm
X.X = ±0.50mm
X.XX = ±0.20mm
X.XXX = ±0.01mm
ANGLES = ±5°
UNLESS STATED

THIS DRAWING AND ANY INFORMATION OR DESCRIPTIVE MATTER SET OUT HEREON ARE CONFIDENTIAL AND COPYRIGHT PROPERTY OF THE HARWIN GROUP AND MUST NOT BE DISCLOSED, LOANED, COPIED OR USED FOR MANUFACTURING, TENDERING OR FOR ANY OTHER PURPOSE WITHOUT THEIR WRITTEN PERMISSION.

MATERIAL:

SEE ABOVE

TITLE:
POWER SMT JUMPER LINK
(TAPE AND REELED)

DRAWING NUMBER:
S1731-46R