

Customer Information Sheet

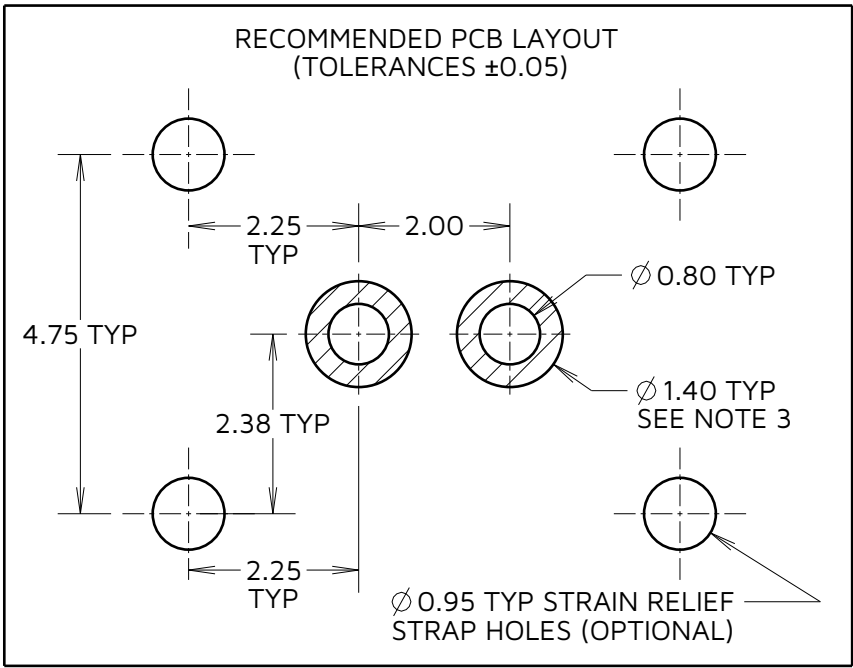
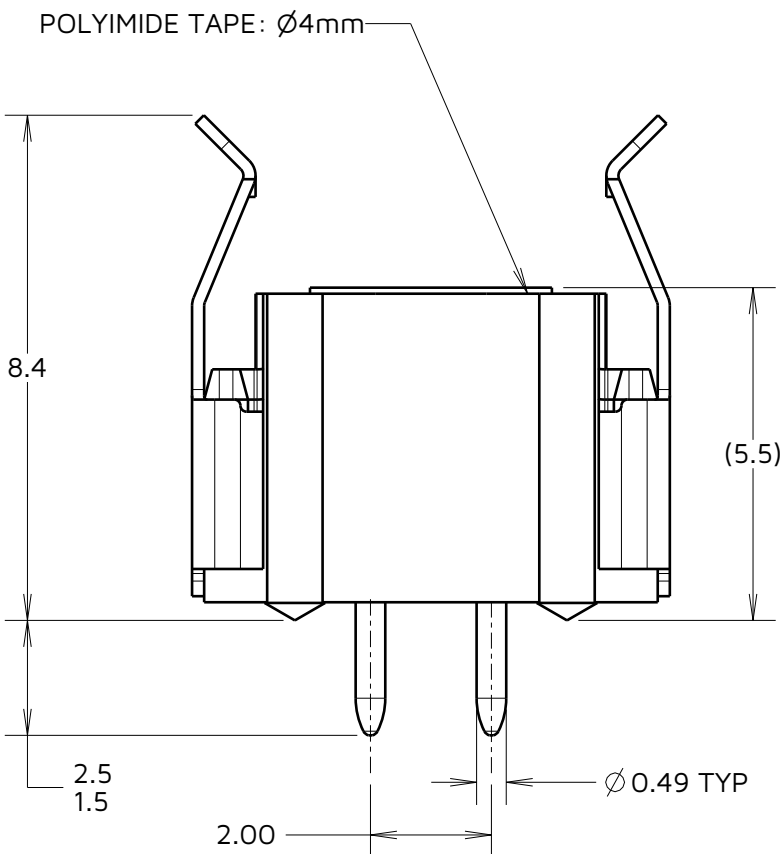
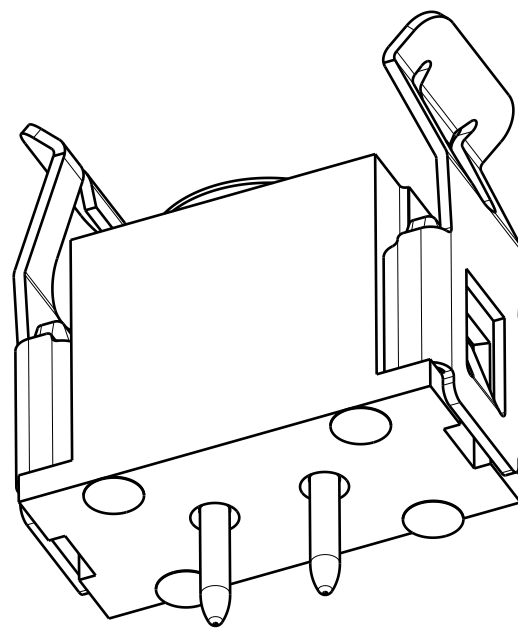
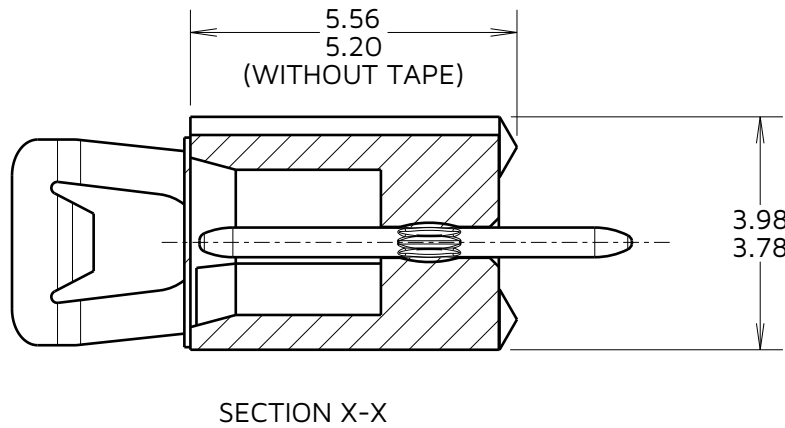
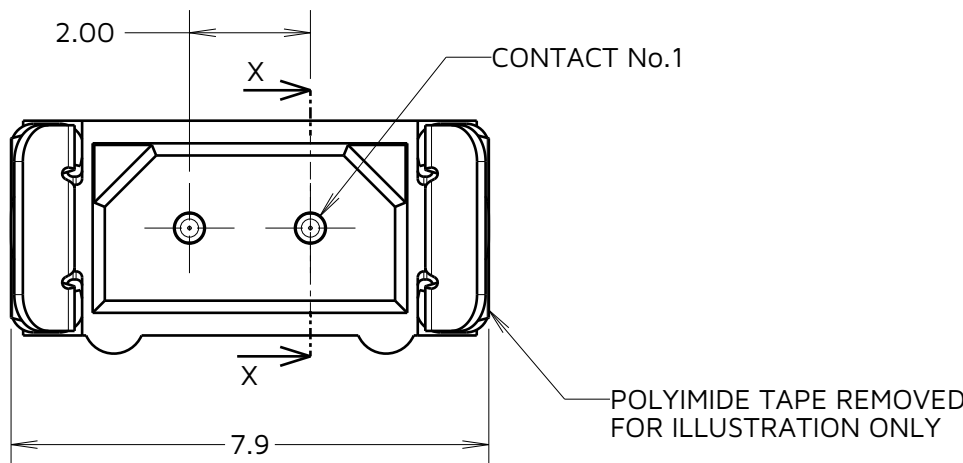
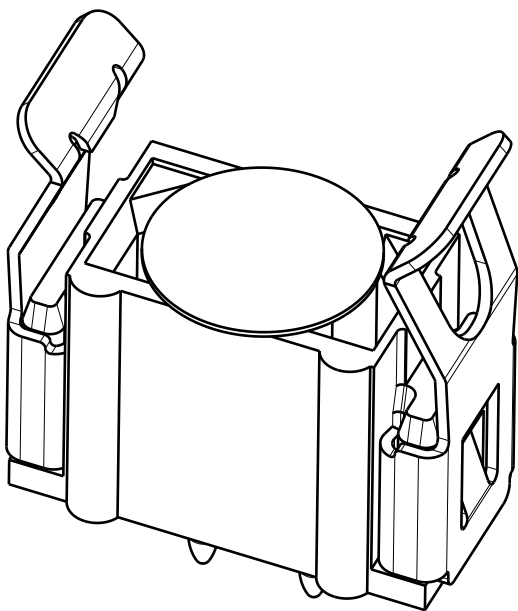
IF IN DOUBT - ASK

©

NOT TO SCALE

THIRD ANGLE PROJECTION

ALL DIMENSIONS IN mm



- NOTES:
- SPECIFICATIONS:
MATERIAL:
HOUSING = GLASS-FILLED PPS UL94V-0, BLACK
CONTACTS = PHOSPHOR BRONZE
LATCHES = BERYLLIUM COPPER
FINISH:
CONTACTS = GOLD ON CONTACT AREA.
100% TIN OVER NICKEL ON TAILS.
LATCH = NICKEL
FOR MECHANICAL/ELECTRICAL REQUIREMENTS, SEE COMPONENT SPECIFICATION C005XX (LATEST ISSUE).
 - FOR STRAIN RELIEF STRAPS, ORDER SEPARATELY
PART NUMBER: M80-0030006.
 - FOR PIN IN HOLE REFLOW, ANNULAR RINGS OF $\varnothing 1.4\text{mm}$ ARE RECOMMENDED TOP AND BOTTOM.
 - SEE SHEET 4 FOR TAPE & REEL DETAILS.

HARWIN
www.harwin.com

TOLERANCES
X. = $\pm 1\text{mm}$
X.X = $\pm 0.50\text{mm}$
X.XX = $\pm 0.20\text{mm}$
X.XXX = $\pm 0.01\text{mm}$
ANGLES = $\pm 5^\circ$
UNLESS STATED

THIS DRAWING AND ANY INFORMATION OR DESCRIPTIVE MATTER SET OUT HEREON ARE CONFIDENTIAL AND COPYRIGHT PROPERTY OF THE HARWIN GROUP AND MUST NOT BE DISCLOSED, LOANED, COPIED OR USED FOR MANUFACTURING, TENDERING OR FOR ANY OTHER PURPOSE WITHOUT THEIR WRITTEN PERMISSION.

MATERIAL:

SEE NOTE 1

TITLE: DATAMATE SIL VERTICAL
2mm PC TAIL PLUG ASSEMBLY
- LATCHED TAPE & REEL
DRAWING NUMBER:
M80-7730242R
SHT
3 OF 4

AB	2	31.07.24	34487
NAME	ISS.	DATE	CN/CO
APPROVED:		A.YEOMANS	
CHECKED:		R.PORTLOCK	
DRAWN:		A.BOXALL	
ASSEMBLY DRG:			

Customer Information Sheet

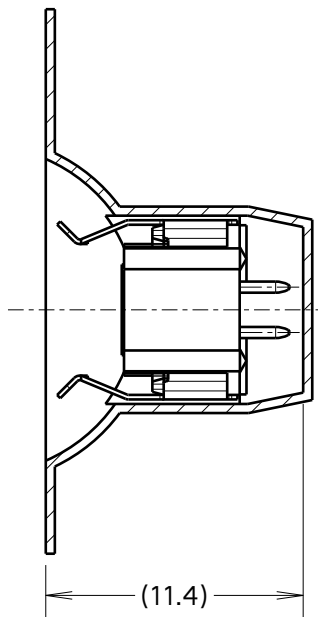
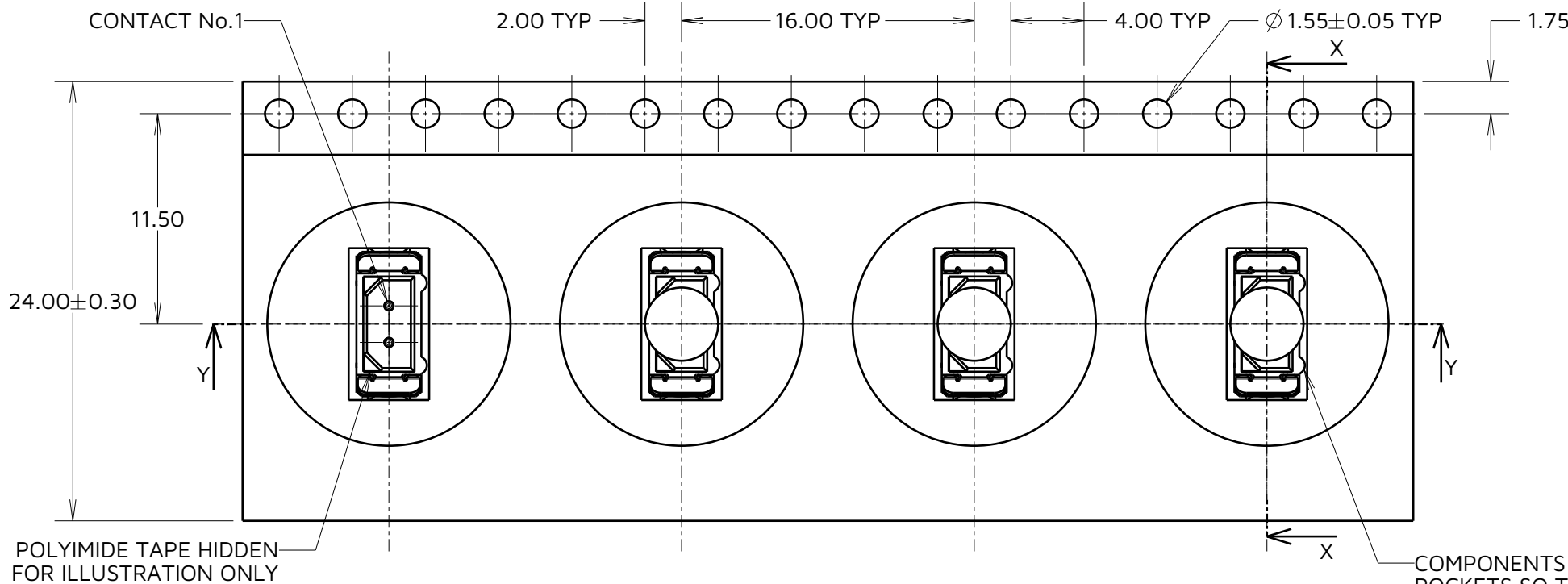
IF IN DOUBT - ASK

©

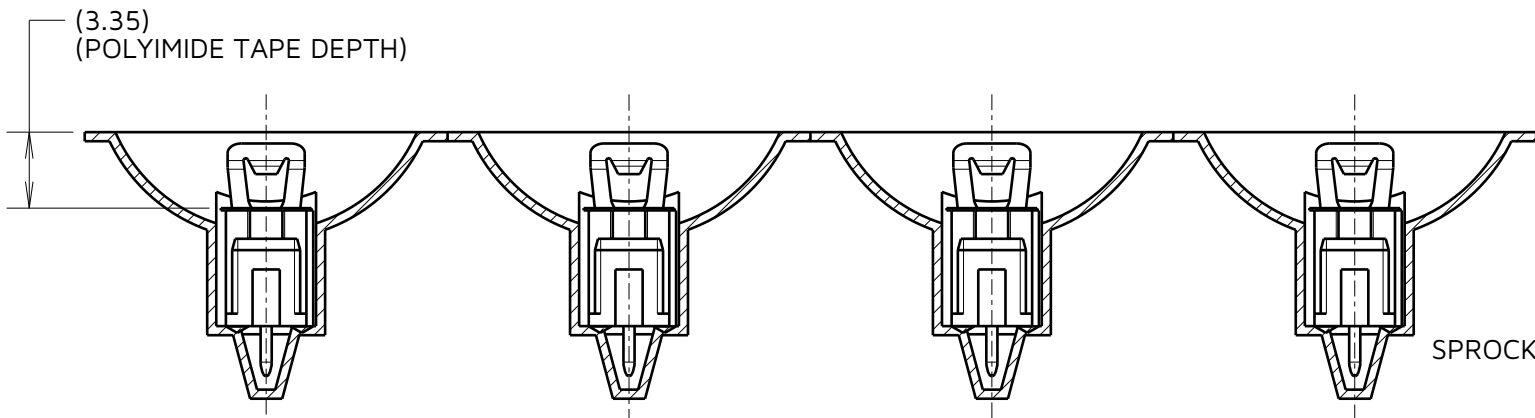
NOT TO SCALE

THIRD ANGLE PROJECTION

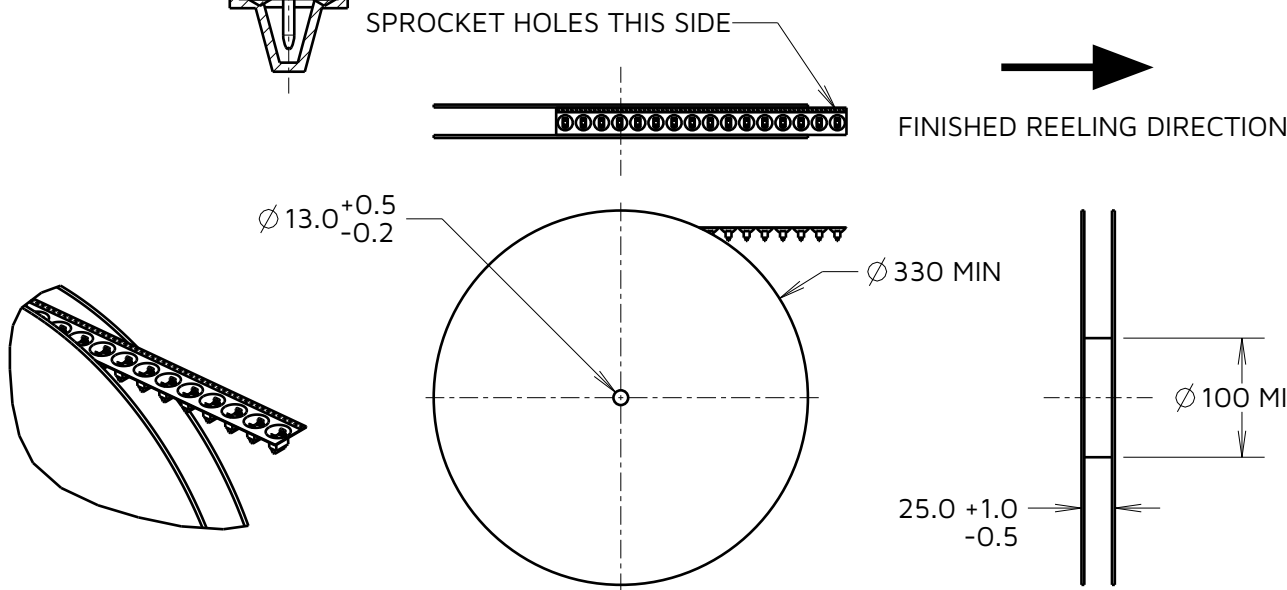
ALL DIMENSIONS IN mm



SECTION X-X



SECTION Y-Y



NOTES:
5. QUANTITY OF PARTS PER REEL: 330PCS
6. THIS PRODUCT IS TAPED AND REELED IN ACCORDANCE WITH EIA-481 STANDARD.
7. TAPE DETAILS ONLY, SEE SHEET 3 FOR CONNECTOR AND PCB LAYOUT DETAILS.

HARWIN

www.harwin.com

TOLERANCES
X. = ± 1 mm
X.X = ± 0.50 mm
X.XX = ± 0.20 mm
X.XXX = ± 0.01 mm
ANGLES = $\pm 5^\circ$
UNLESS STATED

THIS DRAWING AND ANY INFORMATION OR DESCRIPTIVE MATTER SET OUT HEREON ARE CONFIDENTIAL AND COPYRIGHT PROPERTY OF THE HARWIN GROUP AND MUST NOT BE DISCLOSED, LOANED, COPIED OR USED FOR MANUFACTURING, TENDERING OR FOR ANY OTHER PURPOSE WITHOUT THEIR WRITTEN PERMISSION.

MATERIAL:

SEE SHEET 3

TITLE: DATAMATE SIL VERTICAL
2mm PC TAIL PLUG ASSEMBLY
- LATCHED TAPE & REEL

DRAWING NUMBER:
M80-7730242R

SHT
4
OF
4

AB	2	31.07.24	34487
NAME	ISS.	DATE	CN/CO
APPROVED: A.YEOMANS			
CHECKED: R.PORTLOCK			
DRAWN: A.BOXALL			
ASSEMBLY DRG:			