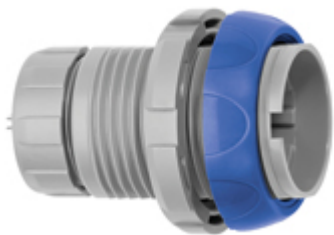


Special

*Image for illustrative purpose only*

Summary

[Request a quote](#)[REDEL SP series en](#)

Number of contacts Low Voltage	13
Gender	Standard
Socket / Receptacle	Socket / Receptacle - Fixed Panel Rear Mounted
Locking system	Push-pull
Size	SP
Suggested matching part	SAP.M13.GLA.6A
Series	REDEL SP - Inner Push-Pull

https://www.lemo.com/int_en/solutions/redel/redel-sp-inner-push-pull/skp-m13-glna.html

LEMO products and services are provided "as is". LEMO makes no warranties or representations with regard to LEMO product & services or use of them, express, implied or statutory, including for accuracy, completeness, or security. The user is fully responsible for his products and applications using LEMO components.

Technical details

Electrical Configuration

Number of contacts Low Voltage	13
Contact Termination Low voltage	PCB - Straight
R (max)	8.5 mOhm
Insert configuration value	SP.M13 - 13 Low V.
Insulator	L: PEEK (UL 94 / V-0/1.5)
Rated current	4 A
Creepage distance	0.5 mm
Contact Dia.	0.7 mm (0.028in)
Gender	Standard

Form & Material

Shell style / Model id	SK_.SP - Fixed socket, key (N) or keys (P, S and T), with two nuts (back panel mounting), blue front nut and straight print contacts
Socket / Receptacle	Fixed Panel Rear Mounted
Housing material	Proprietary sulfone, grey
Locking system	Push-pull
Keying	3 keys (alpha=0, gamma=60, plug: male contacts, receptacle: female contacts)
Colour	Grey - Blue
Variant	Blue front nut

Environment

Technical domain	Medical
Environmental sealing (IP rating)	IP50
Endurance	>5000 mating cycles
Temperature range	-50°C / +170°C
Steam sterilization	> 100 times

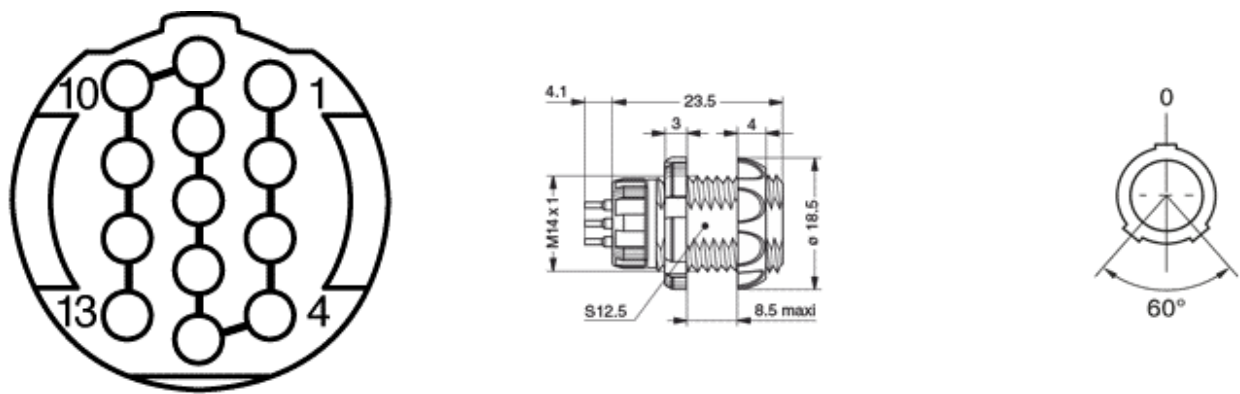
Cable fixation

Cable termination protection	Standard back nut (no additional protection)
------------------------------	--

https://www.lemo.com/int_en/solutions/redel/redel-sp-inner-push-pull/skp-m13-gl1a.html

LEMO products and services are provided "as is". LEMO makes no warranties or representations with regard to LEMO product & services or use of them, express, implied or statutory, including for accuracy, completeness, or security. The user is fully responsible for his products and applications using LEMO components.

Drawings



Dimensions

	a	B	N	e	E _{max}
mm.	4.1	18.5	23.5	M14x1	8.5
in.	0.16	0.73	0.93		0.33