

Standard

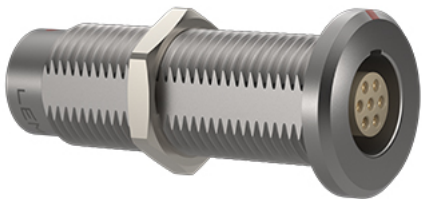


Image for illustrative purpose only

Summary

[Request a quote](#)

[Catalog](#)

[Customer Drawing](#)

Number of contacts Low Voltage	2
Gender	Reverse Gender
Locking system	Push-pull
Size	0B
Suggested matching part	FGJ.0B.302.CLLD42 FGG.0B.302.CLAD42
Series	B - Indoor keyed

Technical details

Electrical Configuration

Number of contacts Low Voltage	2
R (max)	4.8 mOhm
Insert configuration value	0B.302 - 2 Low Voltage
Insulator	L: PEEK (UL 94 / V-0/1.5)
Rated current	10 A
Vtest (contact-contact)	1.9 kV (DC)
Vtest (contact-shell)	1.5 kV (DC)
Max. Solid Conductor	0.34 mm ² (AWG 22)
Max. Stranded Conductor	0.34 mm ² (AWG 22)
Bucket Dia.	0.8 mm (0.031in)
Contact Dia.	0.9 mm (0.04in)
Gender	Reverse Gender

Form & Material

Shell style / Model id	SGJ - Fixed coupler, nut fixing, keys (G, A, B, J, K, L) at the flange end and keys (G, A, B, J, K, L) at the other end, watertight or vacuum-tight
Housing material	Brass (chrome plated [SAE AMS 2460]) shell and collet nut, nickel plated [SAE AMS QQ N 290] brass latch sleeve and mid pieces
Locking system	Push-pull
Keying	Front side: 1 key (alpha=0, female) , Other side: 2 keys (gamma=45, male)
Colour	Grey
Variant	Watertight / Vacuum-tested unmated (connector to device)
Weight	12.45 g

https://www.lemo.com/int_en/solutions/originals/b-indoor-keyed/sgj-0b-302-cllpv.html

LEMO products and services are provided "as is". LEMO makes no warranties or representations with regard to LEMO product & services or use of them, express, implied or statutory, including for accuracy, completeness, or security. The user is fully responsible for his products and applications using LEMO components.

Environment

Technical domain	Audio Video, Energy and Industrial, Medical, Semiconductor, Specialties and Other, Test and Measurement, Transportation, Aerospace and UAV
Environmental sealing (IP rating)	Hermetic unmated
Endurance	5000 mating cycles
Temperature range	-20°C / +100°C
Climatic Category	20/80/21
Humidity (max)	<=95% [at 60 deg C /140 F]
Shielding (min)	75 dB (10 MHz)
Shielding (min)	40 dB (1 GHz)
Shock Resistance	100 g [6 ms]
Vibration	15 g [10 Hz - 2000 Hz]
Pressure	60 bars
R leak (He) (max)	10 ⁻⁷ mbar·l/s (if vacuum-tested)
Salt Spray Corrosion	>1000 hr

Recommended By Lemo

Accessories

Compatible cap	BRE.0S.200.NAS
----------------	--------------------------------

https://www.lemo.com/int_en/solutions/originals/b-indoor-keyed/sgj-0b-302-cllpv.html

LEMO products and services are provided "as is". LEMO makes no warranties or representations with regard to LEMO product & services or use of them, express, implied or statutory, including for accuracy, completeness, or security. The user is fully responsible for his products and applications using LEMO components.