

Standard

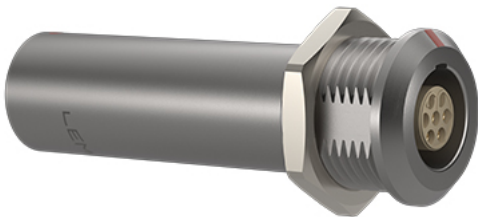


Image for illustrative purpose only

Summary

[Request a quote](#)

[BKT series](#)

[Customer Drawing](#)

Number of contacts Low Voltage	2
Gender	Standard
Locking system	Push-pull
Size	0B
Series	B - Indoor keyed

Technical details

Electrical Configuration

Number of contacts Low Voltage	2
Insert configuration value	0B.302 - 2 Low Voltage
Footprint IPC Class3 compatibility	No
Insulator	L: PEEK (UL 94 / V-0/1.5)
Rated current	10 A
Vtest (contact-contact)	2 kV (DC)
Vtest (contact-shell)	1.7 kV (DC)
Contact retention	30 N
Contact Dia.	0.9 mm (0.04in)
Gender	Standard

Form & Material

Shell style / Model id	RG - Fixed coupler, nut fixing, key (G) at the flange end and keys (G,J or M) at the other end
Housing material	Brass (chrome plated [SAE AMS 2460]) shell and collet nut, nickel plated [SAE AMS QQ N 290] brass latch sleeve and mid pieces
Locking system	Push-pull
Keying	Front side: 1 key (alpha=0, female) , Other side: 1 key (alpha=0, female)
Colour	Grey
Weight	11.62 g

https://www.lemo.com/int_en/solutions/originals/b-indoor-keyed/rgg-0b-302-clm.html

LEMO products and services are provided "as is". LEMO makes no warranties or representations with regard to LEMO product & services or use of them, express, implied or statutory, including for accuracy, completeness, or security. The user is fully responsible for his products and applications using LEMO components.

Environment

Technical domain	Audio Video, Energy and Industrial, Medical, Semiconductor, Specialties and Other, Test and Measurement, Transportation, Aerospace and UAV
Environmental sealing (IP rating)	IP50
Endurance	5000 mating cycles
Temperature range	-55°C / +250°C (max. temperature valid for short periods of use.)
Climatic Category	55/175/21
Humidity (max)	<=95% [at 60 deg C /140 F]
Shielding (min)	75 dB (10 MHz)
Shielding (min)	40 dB (1 GHz)
Shock Resistance	100 g [6 ms]
Vibration	15 g [10 Hz - 2000 Hz]
Salt Spray Corrosion	>1000 hr
Cable fixation	
Panel Drill Hole	M10

https://www.lemo.com/int_en/solutions/originals/b-indoor-keyed/rgg-0b-302-clm.html

LEMO products and services are provided "as is". LEMO makes no warranties or representations with regard to LEMO product & services or use of them, express, implied or statutory, including for accuracy, completeness, or security. The user is fully responsible for his products and applications using LEMO components.