

Special

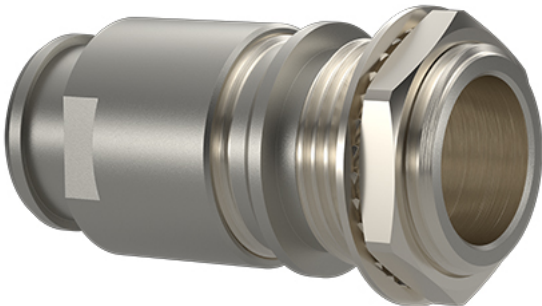


Image for illustrative purpose only

Summary

[Request a quote](#)

SE series

Panel Drill Hole	M15
Jacket cable outside diameter [mm]	7.80 - 9.20 mm
Size	3S
Series	S - Indoor Stepped Insert

Technical details

Electrical Configuration

Insert configuration value	3S.290 - no contacts
----------------------------	----------------------

Form & Material

Shell style / Model id	GSC - Lead through with cable collet and nut for fitting a bend relief
Housing material	Brass (nickel plated [SAE AMS QQ N 290]) collet and crimping tube, brass (chrome plated [SAE AMS 2460]) collet nut
Keying	No keying
Colour	Grey
Weight	22.2 g
Panel Drill Hole	M15

Environment

Technical domain	Audio Video, Energy and Industrial, Semiconductor, Test and Measurement
Environmental sealing (IP rating)	No IP rating
Temperature range	-55°C / +250°C (max. temperature valid for short periods of use.)
Climatic Category	55/175/21
Humidity (max)	<=95% [at 60 deg C /140 F]
Shielding (min)	75 dB (10 MHz)
Shielding (min)	40 dB (1 GHz)
Shock Resistance	100 g [6 ms]
Vibration	15 g [10 Hz - 2000 Hz]
Salt Spray Corrosion	>144 hr

Cable fixation

Jacket cable outside diameter [mm]	7.80 - 9.20 mm
------------------------------------	----------------

Drawings

https://www.lemo.com/int_en/solutions/originals/s-indoor-stepped-insert/gsc-3s-290-nd92z.html

LEMO products and services are provided "as is". LEMO makes no warranties or representations with regard to LEMO product & services or use of them, express, implied or statutory, including for accuracy, completeness, or security. The user is fully responsible for his products and applications using LEMO components.

No keying

Dimensions

	A	B	e	E	L	M	S2	S3
mm.	17	19.5	M15x1.0	8.1	30	12	14	17
in.	0.67	0.77		0.32	1.18	0.47	0.55	0.67