

Standard



Image for illustrative purpose only

Summary

[Request a quote](#)

SE series

Size	0S
Series	S - Indoor Stepped Insert

Technical details

Electrical Configuration

Footprint IPC Class3 compatibility	No
------------------------------------	----

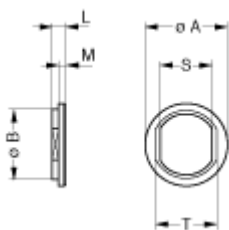
Form & Material

Shell style / Model id	GRA - Insulating washer
Housing material	Polyamide, blue
Keying	No keying
Weight	0.07 g

Environment

Technical domain	Audio Video, Energy and Industrial, Semiconductor, Test and Measurement
Environmental sealing (IP rating)	No IP rating
Temperature range	-40°C / +90°C
Climatic Category	55/175/21
Humidity (max)	<=95% [at 60 deg C /140 F]
Shielding (min)	75 dB (10 MHz)
Shielding (min)	40 dB (1 GHz)
Shock Resistance	100 g [6 ms]
Vibration	15 g [10 Hz - 2000 Hz]

Drawings



No keying

Dimensions

	A	B	L	M	S	T
mm.	12	10.8	1.8	1	8.3	9.9
in.	0.47	0.43	0.07	0.04	0.33	0.39