

Standard



Image for illustrative purpose only

Summary

[Request a quote](#)

SE series

Size	1S
Series	S - Indoor Stepped Insert

Technical details

Electrical Configuration

Footprint IPC Class3 compatibility

No

Insulator

N: PBT (discontinued)

Form & Material

Shell style / Model id

GEA - Hexagonal nuts

Housing material

Aluminum alloy (anodized) shell and collet nut, nickel plated [SAE AMS QQ N 290] brass latch sleeve and mid pieces

Keying

No keying

Weight

1.18 g

Environment

Technical domain

Audio Video, Energy and Industrial, Semiconductor, Test and Measurement

Environmental sealing (IP rating)

No IP rating

Temperature range

-55°C / +250°C (max. temperature valid for short periods of use.)

Climatic Category

55/175/21

Humidity (max)

<=95% [at 60 deg C /140 F]

Shielding (min)

75 dB (10 MHz)

Shielding (min)

40 dB (1 GHz)

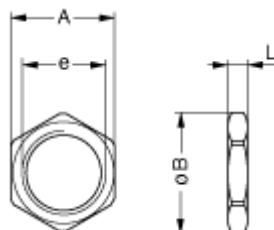
Shock Resistance

100 g [6 ms]

Vibration

15 g [10 Hz - 2000 Hz]

Drawings



No keying

https://www.lemo.com/int_en/solutions/originals/s-indoor-stepped-insert/gea-1s-241-ln.html

LEMO products and services are provided "as is". LEMO makes no warranties or representations with regard to LEMO product & services or use of them, express, implied or statutory, including for accuracy, completeness, or security. The user is fully responsible for his products and applications using LEMO components.

Dimensions

	A	B	e	L
mm.	13	14.8	M11x0.5	2.5
in.	0.51	0.58		0.1

https://www.lemo.com/int_en/solutions/originals/s-indoor-stepped-insert/gea-1s-241-ln.html

LEMO products and services are provided “as is”. LEMO makes no warranties or representations with regard to LEMO product & services or use of them, express, implied or statutory, including for accuracy, completeness, or security. The user is fully responsible for his products and applications using LEMO components.