

Standard



Image for illustrative purpose only

Summary

[Request a quote](#)

[Catalog](#)

Size	1S
Series	S - Indoor Stepped Insert

https://www.lemo.com/int_en/solutions/originals/s-indoor-stepped-insert/gca-1s-255-lt.html

LEMO products and services are provided “as is”. LEMO makes no warranties or representations with regard to LEMO product & services or use of them, express, implied or statutory, including for accuracy, completeness, or security. The user is fully responsible for his products and applications using LEMO components.

Technical details

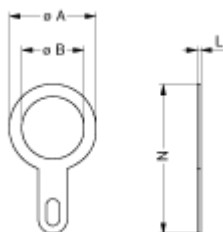
Form & Material

Shell style / Model id	GCA - Earthing washer
Housing material	Brass (CuSnZn plated)
Keying	No keying
Weight	0.59 g

Environment

Technical domain	Audio Video, Energy and Industrial, Semiconductor, Test and Measurement
Environmental sealing (IP rating)	No IP rating
Temperature range	-55°C / +250°C (max. temperature valid for short periods of use.)
Climatic Category	55/175/21
Humidity (max)	<=95% [at 60 deg C /140 F]
Shielding (min)	75 dB (10 MHz)
Shielding (min)	40 dB (1 GHz)
Shock Resistance	100 g [6 ms]
Vibration	15 g [10 Hz - 2000 Hz]

Drawings



No keying

Dimensions

	A	B	L	N
mm.	17	12.2	0.5	27.5
in.	0.67	0.48	0.02	1.08

https://www.lemo.com/int_en/solutions/originals/s-indoor-stepped-insert/gca-1s-255-lt.html

LEMO products and services are provided "as is". LEMO makes no warranties or representations with regard to LEMO product & services or use of them, express, implied or statutory, including for accuracy, completeness, or security. The user is fully responsible for his products and applications using LEMO components.