

Standard



Image for illustrative purpose only

# Summary

[Request a quote](#)

SE series

|        |                            |
|--------|----------------------------|
| Size   | 0E                         |
| Series | E - Outdoor Stepped Insert |

# Technical details

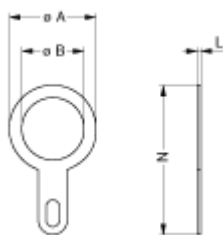
## Form & Material

|                        |                       |
|------------------------|-----------------------|
| Shell style / Model id | GCA - Earthing washer |
| Housing material       | Brass (CuSnZn plated) |
| Keying                 | No keying             |
| Weight                 | 0.43 g                |

## Environment

|                                   |   |
|-----------------------------------|---|
| Technical domain                  | Energy and Industrial, Test and Measurement                       |
| Environmental sealing (IP rating) | No IP rating  |
| Temperature range                 | -55°C / +200°C (max. temperature valid for short periods of use.) |
| Climatic Category                 | 50/175/21   |
| Humidity (max)                    | <=95% [at 60 deg C /140 F]  |
| Shielding (min)                   | 95 dB (10 MHz)  |
| Shielding (min)                   | 80 dB (1 GHz)   |
| Shock Resistance                  | 100 g [ 6 ms]   |
| Vibration                         | 15 g [10 Hz - 2000 Hz]  |

## Drawings



No keying

## Dimensions

|     | A    | B    | L    | N    |
|-----|------|------|------|------|
| mm. | 17   | 14.1 | 0.5  | 27.5 |
| in. | 0.67 | 0.56 | 0.02 | 1.08 |

[https://www.lemo.com/int\\_en/solutions/originals/e-outdoor-stepped-insert/gca-0e-255-lt.html](https://www.lemo.com/int_en/solutions/originals/e-outdoor-stepped-insert/gca-0e-255-lt.html)

LEMO products and services are provided "as is". LEMO makes no warranties or representations with regard to LEMO product & services or use of them, express, implied or statutory, including for accuracy, completeness, or security. The user is fully responsible for his products and applications using LEMO components.