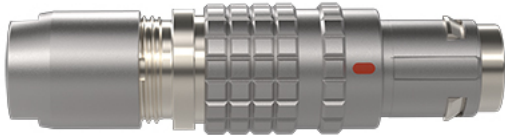


Standard



*Image for illustrative purpose only*

## Summary

[Request a quote](#)

[Catalog](#)

Number of contacts Low Voltage	4
Protocol	USB 2.0 (480Mb/s)
Wire Size/AWG	24 - 20
Gender	Standard
Plug	Plug - Straight
Locking system	Push-pull
Jacket cable outside diameter [mm]	5.10 - 5.50 mm
Size	1T
Suggested matching part	<a href="#">EGG.1T.304.CYM</a> <a href="#">PHG.1T.304.CYMC55</a>
Series	T - Small Outdoor keyed

[https://www.lemo.com/int\\_en/solutions/originals/t-outdoor-keyed/fgg-1t-304-cycc55.html](https://www.lemo.com/int_en/solutions/originals/t-outdoor-keyed/fgg-1t-304-cycc55.html)

LEMO products and services are provided "as is". LEMO makes no warranties or representations with regard to LEMO product & services or use of them, express, implied or statutory, including for accuracy, completeness, or security. The user is fully responsible for his products and applications using LEMO components.

# Technical details

## Electrical Configuration

Number of contacts Low Voltage	4
Contact Termination Low voltage	Crimp
R (max)	4.8 mOhm
Insert configuration value	T.304 - 4 Low Voltage
Insulator	Y: PEEK for crimp contacts
Rated current	10 A
Vtest (contact-contact)	2.4 kV (DC)
Vtest (contact-shell)	2.6 kV (DC)
Contact retention	30 N
Max. Conductor	0.5 mm <sup>2</sup> (AWG 20)
Min. Conductor	0.25 mm <sup>2</sup> (AWG 24)
Bucket Dia.	1.1 mm (0.043in)
Contact Dia.	0.9 mm (0.035in)
Protocol	USB 2.0 (480Mb/s)
Wire Size/AWG	24 - 20
Gender	Standard

## Form & Material

Shell style / Model id	FG - Straight plug, cable collet
Plug	Straight
Housing material	Brass (chrome plated [SAE AMS 2460]) shell and collet nut, nickel plated [SAE AMS QQ N 290] brass latch sleeve and mid pieces
Locking system	Push-pull
Keying	G: 1 key (alpha=0, plug: male contacts, receptacle: female contacts)
Colour	Grey
Weight	19.12 g

[https://www.lemo.com/int\\_en/solutions/originals/t-outdoor-keyed/fgg-1t-304-cycc55.html](https://www.lemo.com/int_en/solutions/originals/t-outdoor-keyed/fgg-1t-304-cycc55.html)

LEMO products and services are provided "as is". LEMO makes no warranties or representations with regard to LEMO product & services or use of them, express, implied or statutory, including for accuracy, completeness, or security. The user is fully responsible for his products and applications using LEMO components.

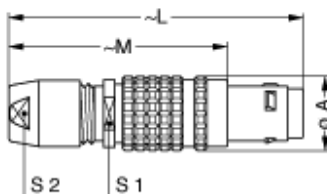
## Environment

Technical domain	Energy and Industrial, Test and Measurement
Environmental sealing (IP rating)	IP68
Endurance	>3000 mating cycles
Temperature range	-55°C / +200°C (max. temperature valid for short periods of use.)
Climatic Category	50/175/21
Humidity (max)	<=95% [at 60 deg C /140 F]
Resistance to vibration	15 g [10 Hz - 2000 Hz]
Shock Resistance	100 g [ 6 ms]
Salt Spray Corrosion	>1000 hr

## Cable fixation

Cable termination protection	Standard back nut (no additional protection)
Fixation type	Cable collet
Jacket cable outside diameter [mm]	5.10 - 5.50 mm

## Drawings



## Dimensions

	A	L	M	S1	S2
mm.	12	46	35	11	9
in.	0.47	1.81	1.38	0.43	0.35




[https://www.lemo.com/int\\_en/solutions/originals/t-outdoor-keyed/fgg-1t-304-cycc55.html](https://www.lemo.com/int_en/solutions/originals/t-outdoor-keyed/fgg-1t-304-cycc55.html)

LEMO products and services are provided "as is". LEMO makes no warranties or representations with regard to LEMO product & services or use of them, express, implied or statutory, including for accuracy, completeness, or security. The user is fully responsible for his products and applications using LEMO components.

# Recommended By Lemo

Accessories	
Replacement contact	<a href="#">FGG.1B.560.ZZC</a>
Compatible cap	<a href="#">BFG.1T.100.CAS</a>
Tools	
Spanner	<a href="#">DCP.0T.110.TN</a>
Positionner	<a href="#">DCE.91.091.BVC</a>
Extraction tool	<a href="#">DCC.09.05B.LAG</a>
Crimp tool	<a href="#">DPC.91.701.V</a>

## Cables

Cable PartNumber	Material	Colour	Cable image
CMN.04.T20.053PGZE		grey	
CMN.04.T20.053PNZE			
CMN.04.T20.053QGZE	TPR (medical)	Grey	
4080	PVC	Grey	
4220	PVC	Black	