

Special

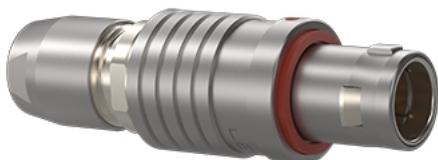


Image for illustrative purpose only

Summary

[Request a quote](#)

BKT series

Number of contacts Low Voltage	10
Wire Size/AWG	32 - 28
Gender	Standard
Plug	Plug - Straight
Locking system	Push-pull
Jacket cable outside diameter [mm]	3.10 - 4.20 mm
Size	1B
Suggested matching part	EGG.1B.310.CLL
Series	B - Indoor keyed

https://www.lemo.com/int_en/solutions/originals/b-indoor-keyed/feg-1b-310-cycd42.html

LEMO products and services are provided "as is". LEMO makes no warranties or representations with regard to LEMO product & services or use of them, express, implied or statutory, including for accuracy, completeness, or security. The user is fully responsible for his products and applications using LEMO components.

Technical details

Electrical Configuration

Number of contacts Low Voltage	10
Contact Termination Low voltage	Crimp
R (max)	8.7 mOhm
Insert configuration value	1B.310 - 10 Low Voltage
Insulator	Y: PEEK for crimp contacts
Rated current	2 A
Vtest (contact-contact)	1.9 kV (DC)
Vtest (contact-shell)	2.3 kV (DC)
Contact retention	12 N
Max. Conductor	0.09 mm ² (AWG 28)
Min. Conductor	0.035 mm ² (AWG 32)
Bucket Dia.	0.45 mm (0.018in)
Contact Dia.	0.5 mm (0.02in)
Wire Size/AWG	32 - 28
Gender	Standard

Form & Material

Shell style / Model id	FE - Straight plug, cable collet, front seal (IP 54 when mated)
Plug	Straight
Housing material	Brass (chrome plated [SAE AMS 2460]) shell and collet nut, nickel plated [SAE AMS QQ N 290] brass latch sleeve and mid pieces
Locking system	Push-pull
Keying	G: 1 key (alpha=0, plug: male contacts, receptacle: female contacts)
Colour	Grey

https://www.lemo.com/int_en/solutions/originals/b-indoor-keyed/feg-1b-310-cycd42.html

LEMO products and services are provided "as is". LEMO makes no warranties or representations with regard to LEMO product & services or use of them, express, implied or statutory, including for accuracy, completeness, or security. The user is fully responsible for his products and applications using LEMO components.

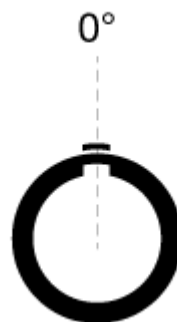
Environment

Technical domain	Audio Video, Energy and Industrial, Medical, Semiconductor, Specialties and Other, Test and Measurement, Transportation, Aerospace and UAV
Environmental sealing (IP rating)	IP54
Endurance	1000 mating cycles
Temperature range	-55°C / +250°C (max. temperature valid for short periods of use.)
Climatic Category	55/175/21
Humidity (max)	<=95% [at 60 deg C /140 F]
Shielding (min)	75 dB (10 MHz)
Shielding (min)	40 dB (1 GHz)
Shock Resistance	100 g [6 ms]
Vibration	15 g [10 Hz - 2000 Hz]
Salt Spray Corrosion	>1000 hr

Cable fixation

Cable termination protection	Standard back nut (no additional protection)
Fixation type	Cable collet
Jacket cable outside diameter [mm]	3.10 - 4.20 mm

Drawings



Dimensions

	M	A	L	S2	S1
mm.	33	13.5	42	9	10
in.	1.3	0.53	1.65	0.35	0.39

https://www.lemo.com/int_en/solutions/originals/b-indoor-keyed/feg-1b-310-cycd42.html

LEMO products and services are provided "as is". LEMO makes no warranties or representations with regard to LEMO product & services or use of them, express, implied or statutory, including for accuracy, completeness, or security. The user is fully responsible for his products and applications using LEMO components.

Recommended By Lemo

Accessories	
Replacement contact	FGG.1B.554.ZZC
Tools	
Positionner	DCE.91.051.BVC
Extraction tool	DCC.05.02B.LAG
Crimp tool	DPC.91.701.V
Spanner wrench	DCD.1B.ZZZ.PA090