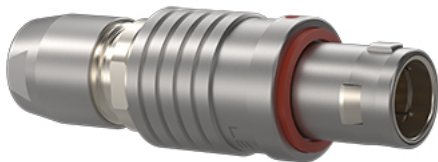


Special

*Image for illustrative purpose only*

Summary

[Request a quote](#)

BKT series

Number of contacts Low Voltage	8
Wire Size/AWG	30 - 22
Gender	Standard
Plug	Plug - Straight
Locking system	Push-pull
Jacket cable outside diameter [mm]	5.30 - 6.20 mm
Size	1B
Suggested matching part	EGG.1B.308.CLL
Series	B - Indoor keyed

https://www.lemo.com/int_en/solutions/originals/b-indoor-keyed/feg-1b-308-clad62.html

LEMO products and services are provided "as is". LEMO makes no warranties or representations with regard to LEMO product & services or use of them, express, implied or statutory, including for accuracy, completeness, or security. The user is fully responsible for his products and applications using LEMO components.

Technical details

Electrical Configuration

Number of contacts Low Voltage	8
Contact Termination Low voltage	Solder
R (max)	6.1 mOhm
Insert configuration value	1B.308 - 8 Low Voltage
Footprint IPC Class3 compatibility	No
Insulator	L: PEEK (UL 94 / V-0/1.5)
Rated current	5 A
Vtest (contact-contact)	1.1 kV (DC)
Vtest (contact-shell)	1 kV (DC)
Max. Conductor	0.34 mm ² (AWG 22)
Max. Stranded Conductor	0.34 mm ² (AWG 22)
Bucket Dia.	0.8 mm (0.031in)
Contact Dia.	0.7 mm (0.028in)
Number of differentiated pairs (High speed)	4
Wire Size/AWG	30 - 22
Gender	Standard

Form & Material

Shell style / Model id	FE - Straight plug, cable collet, front seal (IP 54 when mated)
Plug	Straight
Housing material	Brass (chrome plated [SAE AMS 2460]) shell and collet nut, nickel plated [SAE AMS QQ N 290] brass latch sleeve and mid pieces
Locking system	Push-pull
Keying	G: 1 key (alpha=0, plug: male contacts, receptacle: female contacts)
Colour	Grey
Weight	18.61 g

https://www.lemo.com/int_en/solutions/originals/b-indoor-keyed/feg-1b-308-clad62.html

LEMO products and services are provided "as is". LEMO makes no warranties or representations with regard to LEMO product & services or use of them, express, implied or statutory, including for accuracy, completeness, or security. The user is fully responsible for his products and applications using LEMO components.

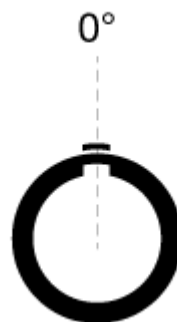
Environment

Technical domain	Audio Video, Energy and Industrial, Medical, Semiconductor, Specialties and Other, Test and Measurement, Transportation, Aerospace and UAV
Environmental sealing (IP rating)	IP54
Endurance	1000 mating cycles
Temperature range	-55°C / +250°C (max. temperature valid for short periods of use.)
Climatic Category	55/175/21
Humidity (max)	<=95% [at 60 deg C /140 F]
Shielding (min)	75 dB (10 MHz)
Shielding (min)	40 dB (1 GHz)
Shock Resistance	100 g [6 ms]
Vibration	15 g [10 Hz - 2000 Hz]
Salt Spray Corrosion	>1000 hr

Cable fixation

Cable termination protection	Standard back nut (no additional protection)
Fixation type	Cable collet
Jacket cable outside diameter [mm]	5.30 - 6.20 mm

Drawings








Dimensions

	M	A	L	S2	S1
mm.	33	13.5	42	9	10
in.	1.3	0.53	1.65	0.35	0.39

https://www.lemo.com/int_en/solutions/originals/b-indoor-keyed/feg-1b-308-clad62.html

LEMO products and services are provided "as is". LEMO makes no warranties or representations with regard to LEMO product & services or use of them, express, implied or statutory, including for accuracy, completeness, or security. The user is fully responsible for his products and applications using LEMO components.

Cables

Cable PartNumber	Material	Colour	Cable image
CMN.08.T22.059QGC	TPR	Grey	
CMN.08.T22.059QGZE	TPR (medical)	Grey	
16080	PVC	Grey	
180240	PVC	Black	
180260	PVC	Black	
335991	PVC	Black	
42265	PVC	Yellow	
80140	PVC	Grey	

https://www.lemo.com/int_en/solutions/originals/b-indoor-keyed/feg-1b-308-clad62.html

LEMO products and services are provided "as is". LEMO makes no warranties or representations with regard to LEMO product & services or use of them, express, implied or statutory, including for accuracy, completeness, or security. The user is fully responsible for his products and applications using LEMO components.