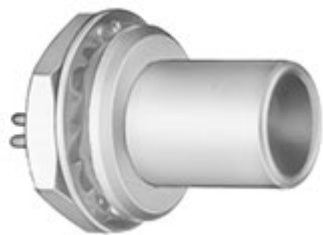


Standard

*Image for illustrative purpose only*

Summary

[Request a quote](#)[Coax triax mixed en](#)

Nb of contacts Triax	1
Plug	Plug - Fixed
Locking system	Snap-on
Size	2S
Suggested matching part	PCA.2S.650.CTLC52
Series	S - Indoor Stepped Insert

https://www.lemo.com/int_en/solutions/originals/s-indoor-stepped-insert/faa-2s-650-cta.html

LEMO products and services are provided "as is". LEMO makes no warranties or representations with regard to LEMO product & services or use of them, express, implied or statutory, including for accuracy, completeness, or security. The user is fully responsible for his products and applications using LEMO components.

Technical details

Electrical Configuration

Nb of contacts Triax	1
Contact Termination Triax	Solder
Insert configuration value	2S.650 - 1 Triax (50 Ohm)
Footprint IPC Class3 compatibility	No
Insulator	T: PTFE
Rated current	12 A
Impedance	50 Ohms
VSWR	1.01 + 0.3 * f/GHz
Vtest	1200 V (AC), 1700 V (DC)
Cable type	RGT 174,Belden 9222,8215,8232A,HF-2426,Triax 8 Nokia,375 029 LEDE
Bucket Dia.	1.4
Contact Dia.	1.6 mm (0.063in)

Form & Material

Shell style / Model id	FAA - Fixed plug, non-latching, nut fixing
Plug	Fixed
Housing material	Brass (chrome plated [SAE AMS 2460]) shell and collet nut, nickel plated [SAE AMS QQ N 290] brass latch sleeve and mid pieces
Locking system	Snap-on
Keying	Circular, male
Colour	Grey
Weight	18.12 g

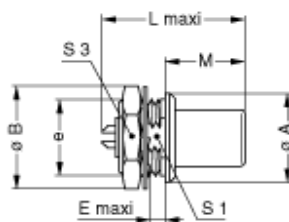
https://www.lemo.com/int_en/solutions/originals/s-indoor-stepped-insert/faa-2s-650-cta.html

LEMO products and services are provided "as is". LEMO makes no warranties or representations with regard to LEMO product & services or use of them, express, implied or statutory, including for accuracy, completeness, or security. The user is fully responsible for his products and applications using LEMO components.

Environment

Technical domain	Audio Video, Energy and Industrial, Semiconductor, Test and Measurement
Environmental sealing (IP rating)	IP50
Endurance	5000 mating cycles
Temperature range	-55°C / +250°C (max. temperature valid for short periods of use.)
Climatic Category	55/175/21
Humidity (max)	<=95% [at 60 deg C /140 F]
Shielding (min)	75 dB (10 MHz)
Shielding (min)	40 dB (1 GHz)
Shock Resistance	100 g [6 ms]
Vibration	15 g [10 Hz - 2000 Hz]
Salt Spray Corrosion	>1000 hr

Drawings



Dimensions

	L	M	E	A	B	e	S3	A	S1
mm.	25	13.8	4	18	19.5	M15x1.0	17	18	13.5
in.	0.98	0.54	0.16	0.71	0.77		0.67	0.71	0.53

https://www.lemo.com/int_en/solutions/originals/s-indoor-stepped-insert/faa-2s-650-cta.html

LEMO products and services are provided "as is". LEMO makes no warranties or representations with regard to LEMO product & services or use of them, express, implied or statutory, including for accuracy, completeness, or security. The user is fully responsible for his products and applications using LEMO components.