

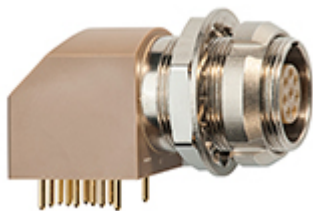
[Standard](#)

Image for illustrative purpose only

Summary

[Request a quote](#)[BKT series](#)[Customer Drawing](#)

Number of contacts Low Voltage	3
Gender	Standard
Socket / Receptacle	Socket / Receptacle - Elbow
Locking system	Push-pull
Size	0B
Suggested matching part	FGG.0B.303.CLAD32
Series	B - Indoor keyed

https://www.lemo.com/int_en/solutions/originals/b-indoor-keyed/exg-0b-303-hln.html

LEMO products and services are provided "as is". LEMO makes no warranties or representations with regard to LEMO product & services or use of them, express, implied or statutory, including for accuracy, completeness, or security. The user is fully responsible for his products and applications using LEMO components.

Technical details

Electrical Configuration

Number of contacts Low Voltage	3
Contact Termination Low voltage	PCB - Straight
R (max)	4.8 mOhm
Insert configuration value	0B.303/EXG - 3 Low Voltage
Insulator	L: PEEK (UL 94 / V-0/1.5)
Rated current	4.5 A
Vtest (contact-contact)	1.7 kV (DC)
Vtest (contact-shell)	1.3 kV (DC)
Contact Dia.	0.9 mm (0.035in)
Gender	Standard

Form & Material

Shell style / Model id	EX - Elbow receptacle for printed circuit with two nuts (solder or screw fixing, back panel mounting)
Socket / Receptacle	Elbow
Housing material	PPS (Polyphenylene) shell, other pieces nickel plated [SAE AMS QQ N 290] brass
Locking system	Push-pull
Keying	G: 1 key (alpha=0, plug: male contacts, receptacle: female contacts)
Weight	10.95 g

Environment

Technical domain	Audio Video, Energy and Industrial, Medical, Semiconductor, Specialties and Other, Test and Measurement, Transportation, Aerospace and UAV
Environmental sealing (IP rating)	IP50
Endurance	5000 mating cycles
Temperature range	-55°C / +250°C (max. temperature valid for short periods of use.)
Climatic Category	55/175/21
Humidity (max)	<=95% [at 60 deg C /140 F]
Shielding (min)	75 dB (10 MHz)
Shielding (min)	40 dB (1 GHz)
Shock Resistance	100 g [6 ms]
Vibration	15 g [10 Hz - 2000 Hz]
Salt Spray Corrosion	>144 hr

https://www.lemo.com/int_en/solutions/originals/b-indoor-keyed/exg-0b-303-hln.html

LEMO products and services are provided "as is". LEMO makes no warranties or representations with regard to LEMO product & services or use of them, express, implied or statutory, including for accuracy, completeness, or security. The user is fully responsible for his products and applications using LEMO components.

Recommended By Lemo

Accessories	
Compatible cap	BRE.OS.200.NAS
Tools	
Spanner 2	DCM.65.106.AZ4
Spanner wrench	Socket for torque wrench DCM.OS.M09.4

CAD

Documents	
PCB	Download
PCB Eagle	Download
Kicad	Download
PCB Altium	Download