

Standard

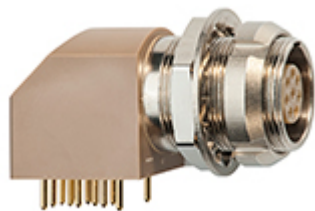


Image for illustrative purpose only

Summary

[Request a quote](#)

[BKT series](#)

[Customer Drawing](#)

| | |
|--------------------------------|-----------------------------------|
| Number of contacts Low Voltage | 2 |
| Gender | Standard |
| Socket / Receptacle | Socket / Receptacle - Elbow |
| Locking system | Push-pull |
| Size | 0B |
| Suggested matching part | FGG.0B.302.CLAD32 |
| Series | B - Indoor keyed |

https://www.lemo.com/int_en/solutions/originals/b-indoor-keyed/exg-0b-302-hlms.html

LEMO products and services are provided "as is". LEMO makes no warranties or representations with regard to LEMO product & services or use of them, express, implied or statutory, including for accuracy, completeness, or security. The user is fully responsible for his products and applications using LEMO components.

Technical details

Electrical Configuration

| | |
|---|--|
| Number of contacts Low Voltage | 2 |
| Contact Termination Low voltage | PCB - Straight |
| R (max) | 4.8 mOhm |
| Insert configuration value | 0B.302/EXG - 2 Low Voltage |
| Footprint IPC Class3 compatibility | Yes |
| Class3 Productibility Level Compatibility | A (General Design Producibility - Preferred) |
| Insulator | L: PEEK (UL 94 / V-0/1.5) |
| Rated current | 4.5 A |
| Vtest (contact-contact) | 1.9 kV (DC) |
| Vtest (contact-shell) | 1.5 kV (DC) |
| Contact Dia. | 0.9 mm (0.035in) |
| Gender | Standard |

Form & Material

| | |
|------------------------|---|
| Shell style / Model id | EX - Elbow receptacle for printed circuit with two nuts (solder or screw fixing, back panel mounting) |
| Socket / Receptacle | Elbow |
| Housing material | PPS (Polyphenylene) shell, other pieces nickel plated [SAE AMS QQ N 290] brass |
| Locking system | Push-pull |
| Keying | G: 1 key (alpha=0, plug: male contacts, receptacle: female contacts) |
| Variant | Screw fixing option |
| Weight | 10.84 g |

https://www.lemo.com/int_en/solutions/originals/b-indoor-keyed/exg-0b-302-hlms.html

LEMO products and services are provided "as is". LEMO makes no warranties or representations with regard to LEMO product & services or use of them, express, implied or statutory, including for accuracy, completeness, or security. The user is fully responsible for his products and applications using LEMO components.

Environment

| | |
|-----------------------------------|--|
| Technical domain | Audio Video, Energy and Industrial, Medical, Semiconductor, Specialties and Other, Test and Measurement, Transportation, Aerospace and UAV |
| Environmental sealing (IP rating) | IP50 |
| Endurance | 5000 mating cycles |
| Temperature range | -55°C / +250°C (max. temperature valid for short periods of use.) |
| Climatic Category | 55/175/21 |
| Humidity (max) | <=95% [at 60 deg C /140 F] |
| Shielding (min) | 75 dB (10 MHz) |
| Shielding (min) | 40 dB (1 GHz) |
| Shock Resistance | 100 g [6 ms] |
| Vibration | 15 g [10 Hz - 2000 Hz] |
| Salt Spray Corrosion | >144 hr |
| Cable fixation | |
| Panel Drill Hole | M9 |

Recommended By Lemo

Accessories

| | |
|----------------|--------------------------------|
| Compatible cap | BRE.OS.200.NAS |
|----------------|--------------------------------|

Tools

| | |
|----------------|---|
| Spanner 2 | DCM.65.106.AZ4 |
| Spanner wrench | Socket for torque wrench DCM.OS.M09.4 |

CAD

Documents

| | |
|------------|--------------------------|
| PCB | Download |
| PCB Eagle | Download |
| Kicad | Download |
| PCB Altium | Download |

https://www.lemo.com/int_en/solutions/originals/b-indoor-keyed/exg-0b-302-hlms.html

LEMO products and services are provided "as is". LEMO makes no warranties or representations with regard to LEMO product & services or use of them, express, implied or statutory, including for accuracy, completeness, or security. The user is fully responsible for his products and applications using LEMO components.