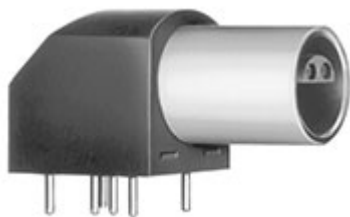


Special



*Image for illustrative purpose only*

## Summary

[Request a quote](#)

[Catalog](#)

[Customer Drawing](#)

Number of contacts Low Voltage	4
Socket / Receptacle	Socket / Receptacle - Elbow
Locking system	Push-pull
Size	1S
Suggested matching part	<a href="#">FFA.1S.304.CLAC22</a>
Series	S - Indoor Stepped Insert

[https://www.lemo.com/int\\_en/solutions/originals/s-indoor-stepped-insert/epl-1s-304-hln.html](https://www.lemo.com/int_en/solutions/originals/s-indoor-stepped-insert/epl-1s-304-hln.html)

LEMO products and services are provided "as is". LEMO makes no warranties or representations with regard to LEMO product & services or use of them, express, implied or statutory, including for accuracy, completeness, or security. The user is fully responsible for his products and applications using LEMO components.

# Technical details

## Electrical Configuration

Number of contacts Low Voltage	4
Contact Termination Low voltage	PCB - Straight
R (max)	4.8 mOhm
Insert configuration value	1S.304 - 4 Low Voltage
Insulator	L: PEEK (UL 94 / V-0/1.5)
Test voltage (kV DC)	1.8
Contact Dia.	0.9 mm (0.0354in)

## Form & Material

Shell style / Model id	EPL - Elbow receptacle for printed circuit (solder or screw fixing)
Socket / Receptacle	Elbow
Housing material	PPS (Polyphenylene) shell, other pieces nickel plated [SAE AMS QQ N 290] brass
Locking system	Push-pull
Keying	Hermaphroditic keying (half moon insert) with female pin 1
Weight	11.93 g

## Environment

Technical domain	Audio Video, Energy and Industrial, Semiconductor, Test and Measurement
Environmental sealing (IP rating)	IP50
Endurance	5000 mating cycles
Temperature range	-55°C / +220°C (max. temperature valid for short periods of use.)
Climatic Category	55/175/21
Humidity (max)	<=95% [at 60 deg C /140 F]
Shielding (min)	75 dB (10 MHz)
Shielding (min)	40 dB (1 GHz)
Shock Resistance	100 g [ 6 ms]
Vibration	15 g [10 Hz - 2000 Hz]
Salt Spray Corrosion	>144 hr

[https://www.lemo.com/int\\_en/solutions/originals/s-indoor-stepped-insert/epl-1s-304-hln.html](https://www.lemo.com/int_en/solutions/originals/s-indoor-stepped-insert/epl-1s-304-hln.html)

LEMO products and services are provided "as is". LEMO makes no warranties or representations with regard to LEMO product & services or use of them, express, implied or statutory, including for accuracy, completeness, or security. The user is fully responsible for his products and applications using LEMO components.

# Recommended By Lemo

Accessories	
Compatible cap	<a href="#">BRE.1S.200.NAS</a>

## CAD

Documents	
PCB	<a href="#">Download</a>
PCB Eagle	<a href="#">Download</a>
Kicad	<a href="#">Download</a>
PCB Altium	<a href="#">Download</a>