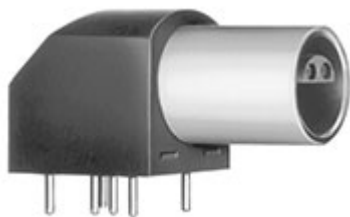


Special

*Image for illustrative purpose only*

Summary

[Request a quote](#)[Catalog](#)[Customer Drawing](#)

Number of contacts Low Voltage	4
Socket / Receptacle	Socket / Receptacle - Elbow
Locking system	Push-pull
Size	0S
Suggested matching part	FFA.0S.304.CLAC17
Series	S - Indoor Stepped Insert

https://www.lemo.com/int_en/solutions/originals/s-indoor-stepped-insert/epl-0s-304-hln.html

LEMO products and services are provided "as is". LEMO makes no warranties or representations with regard to LEMO product & services or use of them, express, implied or statutory, including for accuracy, completeness, or security. The user is fully responsible for his products and applications using LEMO components.

Technical details

Electrical Configuration

Number of contacts Low Voltage	4
Contact Termination Low voltage	PCB - Straight
R (max)	6.1 mOhm
Insert configuration value	0S.304 - 4 Low Voltage
Insulator	L: PEEK (UL 94 / V-0/1.5)
Test voltage (kV DC)	1.5
Contact Dia.	0.7 mm (0.028in)

Form & Material

Shell style / Model id	EPL - Elbow receptacle for printed circuit (solder or screw fixing)
Socket / Receptacle	Elbow
Housing material	PPS (Polyphenylene) shell, other pieces nickel plated [SAE AMS QQ N 290] brass
Locking system	Push-pull
Keying	Hermaphroditic keying (half moon insert) with female pin 1
Weight	9.53 g

Environment

Technical domain	Audio Video, Energy and Industrial, Semiconductor, Test and Measurement
Environmental sealing (IP rating)	IP50
Endurance	5000 mating cycles
Temperature range	-55°C / +220°C (max. temperature valid for short periods of use.)
Climatic Category	55/175/21
Humidity (max)	<=95% [at 60 deg C /140 F]
Shielding (min)	75 dB (10 MHz)
Shielding (min)	40 dB (1 GHz)
Shock Resistance	100 g [6 ms]
Vibration	15 g [10 Hz - 2000 Hz]
Salt Spray Corrosion	>144 hr

https://www.lemo.com/int_en/solutions/originals/s-indoor-stepped-insert/epl-0s-304-hln.html

LEMO products and services are provided "as is". LEMO makes no warranties or representations with regard to LEMO product & services or use of them, express, implied or statutory, including for accuracy, completeness, or security. The user is fully responsible for his products and applications using LEMO components.

Recommended By Lemo

Accessories	
Compatible cap	BRE.OS.200.NAS

CAD

Documents	
PCB	Download
PCB Eagle	Download
Kicad	Download
PCB Altium	Download