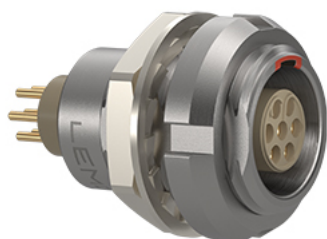


Standard



*Image for illustrative purpose only*

## Summary

[Request a quote](#)

[Catalog](#)

[Customer Drawing](#)

Number of contacts Low Voltage	32
Gender	Standard
Socket / Receptacle	Socket / Receptacle - Fixed Panel Rear Mounted
Locking system	Push-pull
Size	2B
Suggested matching part	<a href="#">FGG.2B.332.CLAD62</a>
Series	B - Indoor keyed

[https://www.lemo.com/int\\_en/solutions/originals/b-indoor-keyed/ecg-2b-332-cln.html](https://www.lemo.com/int_en/solutions/originals/b-indoor-keyed/ecg-2b-332-cln.html)

LEMO products and services are provided "as is". LEMO makes no warranties or representations with regard to LEMO product & services or use of them, express, implied or statutory, including for accuracy, completeness, or security. The user is fully responsible for his products and applications using LEMO components.

# Technical details

## Electrical Configuration

Number of contacts Low Voltage	32
Contact Termination Low voltage	PCB - Straight
R (max)	8.7 mOhm
Insert configuration value	2B.332 - 32 Low Voltage
Insulator	L: PEEK (UL 94 / V-0/1.5)
Rated current	1.3 A
Vtest (contact-contact)	1.1 kV (DC)
Vtest (contact-shell)	2 kV (DC)
Contact Dia.	0.5 mm (0.02in)
Gender	Standard

## Form & Material

Shell style / Model id	EC - Fixed receptacle with two nuts and straight contacts for printed circuit (back panel mounting)
Socket / Receptacle	Fixed Panel Rear Mounted
Housing material	Brass (chrome plated [SAE AMS 2460]) shell and collet nut, nickel plated [SAE AMS QQ N 290] brass latch sleeve and mid pieces
Locking system	Push-pull
Keying	G: 1 key (alpha=0, plug: male contacts, receptacle: female contacts)
Colour	Grey
Weight	17.14 g

[https://www.lemo.com/int\\_en/solutions/originals/b-indoor-keyed/ecg-2b-332-cln.html](https://www.lemo.com/int_en/solutions/originals/b-indoor-keyed/ecg-2b-332-cln.html)

LEMO products and services are provided "as is". LEMO makes no warranties or representations with regard to LEMO product & services or use of them, express, implied or statutory, including for accuracy, completeness, or security. The user is fully responsible for his products and applications using LEMO components.

## Environment

Technical domain	Audio Video, Energy and Industrial, Medical, Semiconductor, Specialties and Other, Test and Measurement, Transportation, Aerospace and UAV
Environmental sealing (IP rating)	IP50
Endurance	5000 mating cycles
Temperature range	-55°C / +250°C (max. temperature valid for short periods of use.)
Climatic Category	55/175/21
Humidity (max)	<=95% [at 60 deg C /140 F]
Shielding (min)	75 dB (10 MHz)
Shielding (min)	40 dB (1 GHz)
Shock Resistance	100 g [ 6 ms]
Vibration	15 g [10 Hz - 2000 Hz]
Salt Spray Corrosion	>1000 hr

## Recommended By Lemo

### Accessories

Compatible cap	<a href="#">BRE.2S.200.NAS</a>
----------------	--------------------------------

### Tools

Spanner 2	<a href="#">DCM.65.176.AZ6</a>
-----------	--------------------------------

Spanner wrench	<a href="#">Socket for torque wrench DCM.65.170.AZ and DCM.2S.M15.6</a>
----------------	---

## CAD

### Documents

PCB	<a href="#">Download</a>
-----	--------------------------

PCB Eagle	<a href="#">Download</a>
-----------	--------------------------

Kicad	<a href="#">Download</a>
-------	--------------------------

PCB Altium	<a href="#">Download</a>
------------	--------------------------

[https://www.lemo.com/int\\_en/solutions/originals/b-indoor-keyed/ecg-2b-332-cln.html](https://www.lemo.com/int_en/solutions/originals/b-indoor-keyed/ecg-2b-332-cln.html)

LEMO products and services are provided "as is". LEMO makes no warranties or representations with regard to LEMO product & services or use of them, express, implied or statutory, including for accuracy, completeness, or security. The user is fully responsible for his products and applications using LEMO components.