

Standard

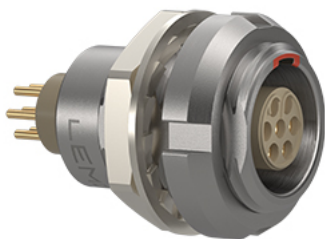


Image for illustrative purpose only

Summary

[Request a quote](#)

[BKT series](#)

[Customer Drawing](#)

Number of contacts Low Voltage	10
Gender	Standard
Socket / Receptacle	Socket / Receptacle - Fixed Panel Rear Mounted
Locking system	Push-pull
Size	1B
Suggested matching part	FGG.1B.310.CLAD52Z
Series	B - Indoor keyed

https://www.lemo.com/int_en/solutions/originals/b-indoor-keyed/ecg-1b-310-cln.html

LEMO products and services are provided "as is". LEMO makes no warranties or representations with regard to LEMO product & services or use of them, express, implied or statutory, including for accuracy, completeness, or security. The user is fully responsible for his products and applications using LEMO components.

Technical details

Electrical Configuration

Number of contacts Low Voltage	10
Contact Termination Low voltage	PCB - Straight
R (max)	8.7 mOhm
Insert configuration value	1B.310 - 10 Low Voltage
Footprint IPC Class3 compatibility	Yes
Class3 Productibility Level Compatibility	C (High Design Producibility - Reduced)
Insulator	L: PEEK (UL 94 / V-0/1.5)
Rated current	2 A
Vtest (contact-contact)	1.3 kV (DC)
Vtest (contact-shell)	2.1 kV (DC)
Contact Dia.	0.5 mm (0.02in)
Gender	Standard

Form & Material

Shell style / Model id	EC - Fixed receptacle with two nuts and straight contacts for printed circuit (back panel mounting)
Socket / Receptacle	Fixed Panel Rear Mounted
Housing material	Brass (chrome plated [SAE AMS 2460]) shell and collet nut, nickel plated [SAE AMS QQ N 290] brass latch sleeve and mid pieces
Locking system	Push-pull
Keying	G: 1 key (alpha=0, plug: male contacts, receptacle: female contacts)
Colour	Grey
Weight	10.32 g

https://www.lemo.com/int_en/solutions/originals/b-indoor-keyed/ecg-1b-310-cln.html

LEMO products and services are provided "as is". LEMO makes no warranties or representations with regard to LEMO product & services or use of them, express, implied or statutory, including for accuracy, completeness, or security. The user is fully responsible for his products and applications using LEMO components.

Environment

Technical domain	Audio Video, Energy and Industrial, Medical, Semiconductor, Specialties and Other, Test and Measurement, Transportation, Aerospace and UAV
Environmental sealing (IP rating)	IP50
Endurance	5000 mating cycles
Temperature range	-55°C / +250°C (max. temperature valid for short periods of use.)
Climatic Category	55/175/21
Humidity (max)	<=95% [at 60 deg C /140 F]
Shielding (min)	75 dB (10 MHz)
Shielding (min)	40 dB (1 GHz)
Shock Resistance	100 g [6 ms]
Vibration	15 g [10 Hz - 2000 Hz]
Salt Spray Corrosion	>1000 hr
Cable fixation	
Panel Drill Hole	M12

Recommended By Lemo

Accessories

Compatible cap	BRE.1S.200.NAS
----------------	--------------------------------

Tools

Spanner 2	DCM.65.141.AZ4
Spanner wrench	Socket for torque wrench DCM.1S.M12.4

CAD

Documents

PCB	Download
PCB Eagle	Download
Kicad	Download
PCB Altium	Download

https://www.lemo.com/int_en/solutions/originals/b-indoor-keyed/ecg-1b-310-cln.html

LEMO products and services are provided "as is". LEMO makes no warranties or representations with regard to LEMO product & services or use of them, express, implied or statutory, including for accuracy, completeness, or security. The user is fully responsible for his products and applications using LEMO components.