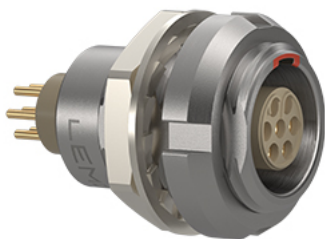


Standard



*Image for illustrative purpose only*

## Summary

[Request a quote](#)

[Catalog](#)

|                                |  |
|--------------------------------|--|
| Number of contacts Low Voltage | 2  |
| Gender                         | Standard                                       |
| Socket / Receptacle            | Socket / Receptacle - Fixed Panel Rear Mounted |
| Locking system                 | Push-pull                                      |
| Size                           | 0B   |
| Suggested matching part        | <a href="#">FGG.0B.302.CLAD42</a>              |
| Series                         | B - Indoor keyed                               |

[https://www.lemo.com/int\\_en/solutions/originals/b-indoor-keyed/ecg-0b-302-cln.html](https://www.lemo.com/int_en/solutions/originals/b-indoor-keyed/ecg-0b-302-cln.html)

LEMO products and services are provided "as is". LEMO makes no warranties or representations with regard to LEMO product & services or use of them, express, implied or statutory, including for accuracy, completeness, or security. The user is fully responsible for his products and applications using LEMO components.

# Technical details

## Electrical Configuration

|                                 |                           |
|---------------------------------|---------------------------|
| Number of contacts Low Voltage  | 2                         |
| Contact Termination Low voltage | PCB - Straight            |
| R (max)                         | 4.8 mOhm                  |
| Insert configuration value      | 0B.302 - 2 Low Voltage    |
| Insulator                       | L: PEEK (UL 94 / V-0/1.5) |
| Rated current                   | 10 A                      |
| Vtest (contact-contact)         | 1.9 kV (DC)               |
| Vtest (contact-shell)           | 1.5 kV (DC)               |
| Contact Dia.                    | 0.9 mm (0.035in)          |
| Gender                          | Standard                  |

## Form & Material

|                        |   |
|------------------------|---|
| Shell style / Model id | EC - Fixed receptacle with two nuts and straight contacts for printed circuit (back panel mounting)                           |
| Socket / Receptacle    | Fixed Panel Rear Mounted  |
| Housing material       | Brass (chrome plated [SAE AMS 2460]) shell and collet nut, nickel plated [SAE AMS QQ N 290] brass latch sleeve and mid pieces |
| Locking system         | Push-pull   |
| Keying                 | G: 1 key (alpha=0, plug: male contacts, receptacle: female contacts)  |
| Colour                 | Grey  |
| Weight                 | 4.83 g  |

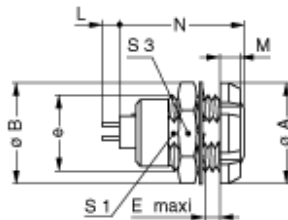
[https://www.lemo.com/int\\_en/solutions/originals/b-indoor-keyed/ecg-0b-302-cln.html](https://www.lemo.com/int_en/solutions/originals/b-indoor-keyed/ecg-0b-302-cln.html)

LEMO products and services are provided "as is". LEMO makes no warranties or representations with regard to LEMO product & services or use of them, express, implied or statutory, including for accuracy, completeness, or security. The user is fully responsible for his products and applications using LEMO components.

## Environment

|                                   |  |
|-----------------------------------|--|
| Technical domain                  | Audio Video, Energy and Industrial, Medical, Semiconductor, Specialties and Other, Test and Measurement, Transportation, Aerospace and UAV |
| Environmental sealing (IP rating) | IP50   |
| Endurance                         | 5000 mating cycles   |
| Temperature range                 | -55°C / +250°C (max. temperature valid for short periods of use.)  |
| Climatic Category                 | 55/175/21  |
| Humidity (max)                    | <=95% [at 60 deg C /140 F]   |
| Shielding (min)                   | 75 dB (10 MHz)   |
| Shielding (min)                   | 40 dB (1 GHz)  |
| Shock Resistance                  | 100 g [ 6 ms]  |
| Vibration                         | 15 g [10 Hz - 2000 Hz]   |
| Salt Spray Corrosion              | >1000 hr   |

## Drawings



## Dimensions

|     | A    | Nmax | S1   | S3   | M   | B    | e      | E    | Lmax  |
|-----|------|------|------|------|-----|------|--------|------|-------|
| mm. | 12   | 16.3 | 8.2  | 11   | 2.5 | 12.4 | M9x0.6 | 5.5  | 19.55 |
| in. | 0.47 | 0.64 | 0.32 | 0.43 | 0.1 | 0.49 |        | 0.22 | 0.77  |

[https://www.lemo.com/int\\_en/solutions/originals/b-indoor-keyed/ecg-0b-302-cln.html](https://www.lemo.com/int_en/solutions/originals/b-indoor-keyed/ecg-0b-302-cln.html)

LEMO products and services are provided "as is". LEMO makes no warranties or representations with regard to LEMO product & services or use of them, express, implied or statutory, including for accuracy, completeness, or security. The user is fully responsible for his products and applications using LEMO components.

# Recommended By Lemo

| Accessories    |   |
|----------------|---|
| Compatible cap | <a href="#">BRE.0S.200.NAS</a>  |
| Tools          |   |
| Spanner 2      | <a href="#">DCM.65.106.AZ4</a>  |
| Spanner wrench | <a href="#">Socket for torque wrench DCM.65.100.AZ and DCM.0S.M09.4</a> |

## CAD

| Documents  |                          |
|------------|--------------------------|
| PCB        | <a href="#">Download</a> |
| PCB Eagle  | <a href="#">Download</a> |
| Kicad      | <a href="#">Download</a> |
| PCB Altium | <a href="#">Download</a> |