

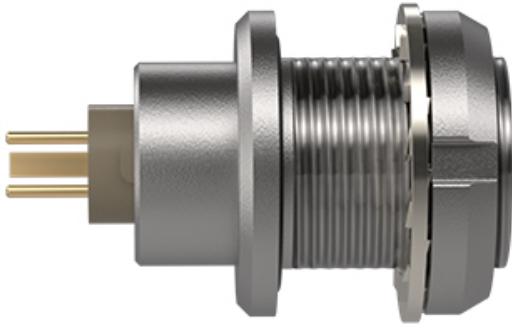
[Standard](#)

Image for illustrative purpose only

Summary

[Request a quote](#)[High speed data transfer](#)[Customer Drawing](#)

Number of contacts Low Voltage	2
Protocol	10G Base-T1 (10Gb/s)
Gender	Standard
Socket / Receptacle	Socket / Receptacle - Fixed Panel Rear Mounted
Locking system	Push-pull
Size	0T
Series	T - Small Outdoor keyed

https://www.lemo.com/int_en/solutions/originals/t-outdoor-keyed/eag-0t-511-cln.html

LEMO products and services are provided "as is". LEMO makes no warranties or representations with regard to LEMO product & services or use of them, express, implied or statutory, including for accuracy, completeness, or security. The user is fully responsible for his products and applications using LEMO components.

Technical details

Electrical Configuration

Number of contacts Low Voltage	2
Contact Termination Low voltage	PCB - Straight
Insert configuration value	0T.511 - SPE - 2 High Speed, Low Voltage (10G BASE-T1 (IEEE 802.3ch))
Footprint IPC Class3 compatibility	Yes
Class3 Productibility Level Compatibility	A (General Design Producibility - Preferred)
Insulator	L: PEEK (UL 94 / V-0/1.5)
Rated current	5 A
Vtest (contact-contact)	2.2 kV (DC)
Vtest (contact-shell)	1.7 kV (DC)
Number of differentiated pairs (High speed)	1
Protocol	10G Base-T1 (10Gb/s)
Gender	Standard

Form & Material

Shell style / Model id	EA - Fixed receptacle, nut fixing (back panel mounting)
Socket / Receptacle	Fixed Panel Rear Mounted
Housing material	Brass (chrome plated [SAE AMS 2460]) shell and collet nut, nickel plated [SAE AMS QQ N 290] brass latch sleeve and mid pieces
Locking system	Push-pull
Keying	G: 1 key (alpha=0, plug: male contacts, receptacle: female contacts)
Colour	Grey
Weight	4.37 g

https://www.lemo.com/int_en/solutions/originals/t-outdoor-keyed/eag-0t-511-cln.html

LEMO products and services are provided "as is". LEMO makes no warranties or representations with regard to LEMO product & services or use of them, express, implied or statutory, including for accuracy, completeness, or security. The user is fully responsible for his products and applications using LEMO components.

Environment

Technical domain	Energy and Industrial, Test and Measurement
Environmental sealing (IP rating)	IP68
Endurance	>3000 mating cycles
Temperature range	-55°C / +200°C (max. temperature valid for short periods of use.)
Climatic Category	50/175/21
Humidity (max)	<=95% [at 60 deg C /140 F]
Resistance to vibration	15 g [10 Hz - 2000 Hz]
Shock Resistance	100 g [6 ms]
Salt Spray Corrosion	>1000 hr

Cable fixation

Panel Drill Hole	M9
------------------	----

Recommended By Lemo

Tools

Spanner 2	DCM.65.106.AZ4
Spanner wrench	Socket for torque wrench DCM.0S.M09.4

CAD

Documents

PCB	Download
PCB Eagle	Download
Kicad	Download
PCB Altium	Download

https://www.lemo.com/int_en/solutions/originals/t-outdoor-keyed/eag-0t-511-cln.html

LEMO products and services are provided "as is". LEMO makes no warranties or representations with regard to LEMO product & services or use of them, express, implied or statutory, including for accuracy, completeness, or security. The user is fully responsible for his products and applications using LEMO components.