



Image for illustrative purpose only

## Summary

[Request a quote](#)

[P series catalog](#)

Number of contacts Low Voltage	12
Wire Size/AWG	30 - 22
Gender	Standard
Socket / Receptacle	Socket / Receptacle - Fixed Panel Front Mounted
Locking system	Push-pull
Jacket cable outside diameter [mm]	1.00 - 15.60 mm
Size	2P
Suggested matching part	<a href="#">CAB.M12.NLA.C92N</a>
Series	REDEL P - Push-Pull

[https://www.lemo.com/int\\_en/solutions/redel/redel-p-push-pull/clb-m12-nlln.html](https://www.lemo.com/int_en/solutions/redel/redel-p-push-pull/clb-m12-nlln.html)

LEMO products and services are provided "as is". LEMO makes no warranties or representations with regard to LEMO product & services or use of them, express, implied or statutory, including for accuracy, completeness, or security. The user is fully responsible for his products and applications using LEMO components.

# Technical details

## Electrical Configuration

Number of contacts Low Voltage	12
Contact Termination Low voltage	Solder
Insert configuration value	2P.M12 - 12 Low V.
Insulator	L: PEEK for solder contacts
Rated current	7 A
Test voltage contact-contact	1.77 (kV DC)
Air clearance	0.85 mm
Creepage distance	0.85 mm
Wire Size/AWG	30 - 22
Gender	Standard

## Form & Material

Shell style / Model id	CL - Fixed receptacle, nut fixing
Socket / Receptacle	Fixed Panel Front Mounted
Housing material	PSU (Polysulfone), black
Locking system	Push-pull
Keying	B: 3 keys (alpha=0, gamma=60, Plug: male contacts, Receptacle: female contacts)
Colour	Black
Weight	5.65 g

## Environment

Technical domain	Energy and Industrial, Medical, Test and Measurement, Transportation, Aerospace and UAV
Environmental sealing (IP rating)	IP50
Endurance	>5000 mating cycles
Temperature range	-50°C / +150°C
F ret (max)	250 N
F ret (min)	150 N
Steam sterilization	Compiles with ISO 17665:2024 sterilization standard for autoclave, ISO 11135:2014 for EtO, and ISO 11137-1, -2, -3 standards for gamma, e-beam x-ray. For more details on sterilization methods and cycles, please contact us.

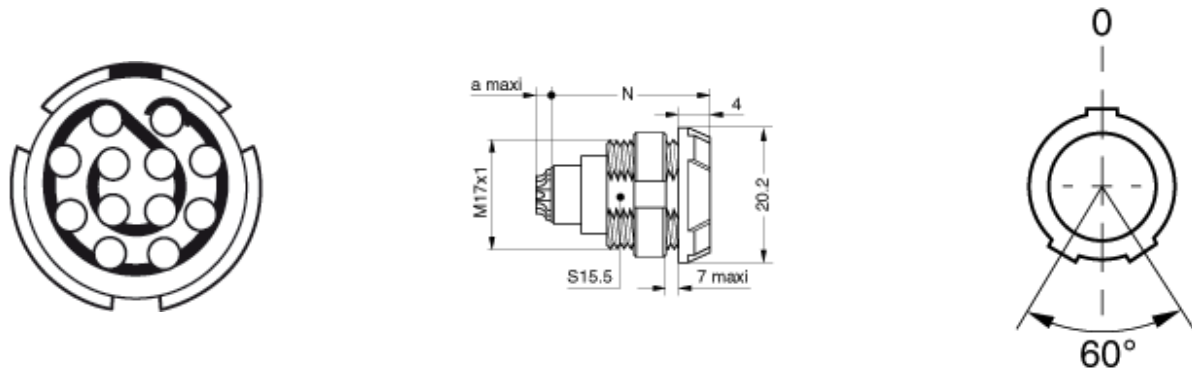
[https://www.lemo.com/int\\_en/solutions/redel/redel-p-push-pull/clb-m12-nlln.html](https://www.lemo.com/int_en/solutions/redel/redel-p-push-pull/clb-m12-nlln.html)

LEMO products and services are provided “as is”. LEMO makes no warranties or representations with regard to LEMO product & services or use of them, express, implied or statutory, including for accuracy, completeness, or security. The user is fully responsible for his products and applications using LEMO components.

Cable fixation

Jacket cable outside diameter [mm]	1.00 - 15.60 mm
------------------------------------	-----------------

Drawings



Dimensions

	N	a
mm.	23.8	3.4-4.9
in.	0.94	