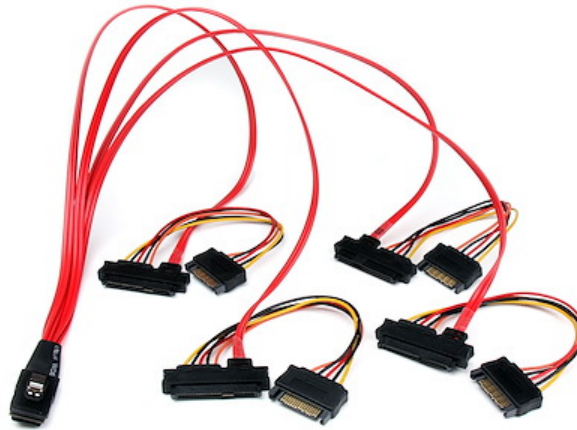


50cm Internal Serial Attached SCSI Mini SAS Cable - SFF8087 to 4x SFF8482

Product ID: SAS808782P50



The SAS808782P50 Mini SAS to SAS cable (50cm) features one 36-pin SFF-8087 plug, which fans out to four individual 29-pin SFF-8482 receptacles, providing a reliable solution for connecting multiple SAS HDD drives (with both data and power) to a single mini SAS controller connection.

This high quality internal Mini SAS to SAS cable is designed for long-lasting dependability and reliable performance and is backed by our lifetime warranty.

Certifications, Reports and Compatibility



Applications

- Connects four SAS hard drives to a SAS controller
- SFF-8482 Connector will support SAS and SATA Hard Drives

Features

- Supports up to 6Gbps throughput per channel
- 4x SFF-8482 connections, each with data and power
- 1x SFF-8087 connector

Connector(s)

Warranty	Lifetime
Connector A	1 - SFF-8087 (36 Pin, Internal Mini-SAS)
Connector B	4 - SATA Power (15 pin)
	4 - SFF-8482 (29 pin, Data & Power, Internal SAS)

Physical Characteristics

Color	Red
Wire Gauge	30 AWG
Cable Length	1.6 ft [0.5 m]
Product Length	19.7 in [50 cm]
Product Width	2.0 in [5 cm]
Product Height	0.6 in [1.5 cm]
Weight of Product	3.3 oz [94 g]

Packaging Information

Package Quantity	1
Package Length	6.3 in [15.9 cm]
Package Width	3.1 in [7.8 cm]
Package Height	1.8 in [4.5 cm]
Shipping (Package) Weight	3.2 oz [92.0 g]

What's in the Box

Included in Package	1 - 50cm Serial Attached SCSI SAS Cable - SFF8087 to 4x SFF8482
---------------------	---

Warranty Information

Warranty	Lifetime
----------	----------

**Product appearance and specifications are subject to change without notice.*