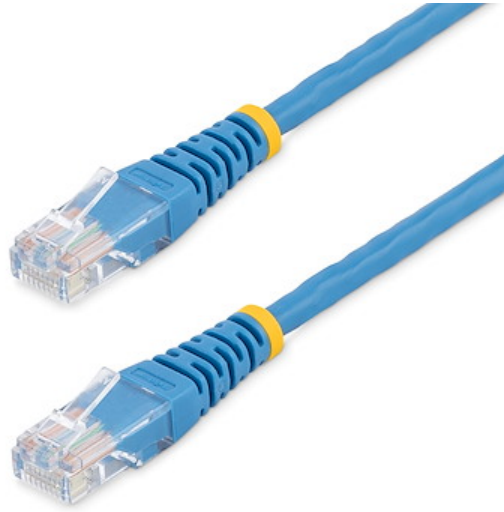


Cat5e Patch Cable with Molded RJ45 Connectors - 20 ft. - Blue

Product ID: M45PATCH20BL



The M45PAT20BL Cat5e Patch Cable (20 ft) meets or exceeds all Cat 5e specifications to ensure reliable Ethernet network connections, and features a durable blue PVC jacket that enables you to color code your network cable runs as needed.

To ensure long-lasting performance, this high quality Cat5e patch cable features molded PVC strain relief that prevents the RJ45 connector termination points from bending at sharp angles - reducing the risk of cable damage, which could decrease network performance.

Constructed of only top quality materials, this Cat5e Patch Cord delivers reliable performance and is backed by our Lifetime Warranty.

StarTech.com Cat5e cables are manufactured using high-quality copper conductors. While many cable manufacturers offer a "cheaper" cable, based on a copper-coated aluminum core, we make no compromises on quality to ensure you receive top value and performance for your network cable investment.

This Cat 5e cable is constructed with 24 gauge copper wire, to support a broad range of Ethernet applications such as Power over Ethernet (PoE). Because we use a high quality copper wire, our cables easily sustain the power required for Power over Ethernet applications, whereas the inferior quality offered by copper-coated aluminum cables may be subject to insufficient power delivery, heat buildup, equipment damage and potentially, fire.

This molded patch cable offers high quality connectors comprised of 50-micron gold, to deliver optimum conductivity while eliminating signal loss due to oxidation or corrosion.

Certifications, Reports and Compatibility



Applications

- Designed for use with Fast Ethernet networks
- Patches from hub to distribution panel
- Connects workstation to wall outlet
- Extend the reach of your Ethernet network devices by 20 ft

Features

- Molded RJ45 connectors
- Carefully constructed and tested, to keep Near End Crosstalk (NEXT) well within acceptable limits
- Colored hoods for departmental color coding
- Constructed with top quality components
- High quality 24 AWG copper wire

Hardware

Warranty	Lifetime
Number of Conductors	4 Pair UTP
Cable Jacket Material	PVC - Polyvinyl Chloride
Fire Rating	CMG Rated (General Purpose)
Cable Type	Molded

Connector(s)

Connector A	1 - RJ-45
Connector B	1 - RJ-45

Environmental

Operating Temperature	-20 (-4°F) - 60 (140°F)
Storage Temperature	0 (32°F) - 30 (86°F)
Humidity	60%RH

Physical

Characteristics

Color	Blue
Wire Gauge	24 AWG
Conductor Type	Stranded Copper
Cable Length	20.0 ft [6.1 m]
Product Length	20.0 ft [6.1 m]
Product Width	0.5 in [1.2 cm]
Product Height	0.6 in [1.4 cm]
Weight of Product	7.5 oz [212.0 g]

Packaging Information

Package Quantity	1
Package Length	7.8 in [19.8 cm]
Package Width	7.6 in [19.4 cm]
Package Height	1.2 in [3.1 cm]
Shipping (Package) Weight	8.7 oz [246.0 g]

What's in the Box

Included in Package	1 - 20 ft. Cat5e Patch Cable - Blue
---------------------	-------------------------------------

Warranty Information

Warranty	Lifetime
----------	----------

****Product appearance and specifications are subject to change without notice.***