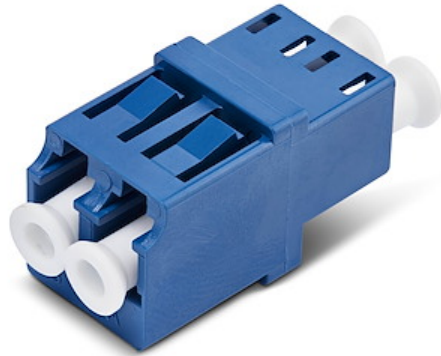


LC to LC Coupler, Single Mode LC Fiber Coupler, LC/UPC Duplex Adapter, Fiber Optic LC Coupler for Patch Panel

**Product ID:** LCLCSMCOUPLER



Extend a Single Mode fiber connection by connecting two LC Duplex cables with this LC to LC Coupler. The female to female fiber coupler maintains optimal signal integrity while achieving low insertion loss that exceeds industry standards.

The LC Fiber Coupler supports Single Mode LC/LC fiber cables. It is compatible with OS1/OS2 (9/125m) fiber core/cladding. The coupler features toolless setup to simplify installation into fiber patch panels and rackmount/wall enclosure. Ideal for fast deployment in data centers, enterprise networks, and telecom applications.

The LC/LC Keystone Coupler features a durable ABS housing and ceramic-lined inner sleeves for precise fiber alignment, minimizing signal loss for long-lasting reliability and performance.

## Certifications, Reports and Compatibility



## Applications

- Connect two Single Mode LC to LC fiber cables to extend a fiber connection
- Add fiber connectivity to a rackmount patch panel or wall plate

## Features

- **Extend LC Connections**: Seamlessly join two Single Mode LC fiber cables or extend fiber runs in rackmount patch panels, wall enclosures or distribution frames; Ideal for scalable data center and telecom builds enclosures
- **Reliable, High-Speed Performance**: Engineered for 1/10/40/100Gbps transmission with low 0.2dB insertion loss and precision mating, this coupler ensures signal integrity and exceeds TIA-568 B.3 standards; Optimized for Single Mode laser sources
- **Quick Installation**: Plug-and-play design with top snap-in tabs offers quick, secure installation in standard panels with no tools required, no extra steps
- **Single Mode Compatibility**: Supports OS1/OS2 Single Mode LC cables with 9/125um cores, operating at standard 1260-1625nm wavelengths; Best paired with LC/LC cables with UPC polished ends
- **The IT Pro's Choice**: Our network jacks, connectors, and couplers are tested for peak performance in structured cabling environments; Designed for reliability with consistent fit and finish; Backed by free lifetime 24/5 multi-lingual technical assistance

---

#### Hardware

Warranty	1 Year
Active or Passive Adapter	Passive
Ports	2

---

#### Performance

Type	Single Mode
------	-------------

---

#### Connector(s)

Connector A	1 - Fiber Optic LC Duplex
Connector B	1 - Fiber Optic LC Duplex

---

#### Environmental

Operating Temperature	-40 to 85 (-40&degF to 185&degF)
Storage Temperature	-40 to 85 (-40&degF to 185&degF)
Humidity	0%~90%

---

#### Physical Characteristics

Color	Blue
Connector Style	Straight
Product Length	1.0 in [25.7 mm]
Product Width	0.5 in [12.9 mm]

Product Height 0.6 in [15.2 mm]

Weight of Product 0.1 oz [3 g]

---

**Packaging Information**

Package Length 3.5 in [9.0 cm]

Package Width 4.7 in [12.0 cm]

Package Height 0.5 in [1.3 cm]

Shipping (Package) Weight 0.2 oz [5.0 g]

---

**What's in the Box**

Included in Package 1 - LC Fiber Coupler

---

***\*Product appearance and specifications are subject to change without notice.***