

## SMC Plug to MMCX Jack Cable RG-316 Coax in 200 CM

### FMC00324-200CM

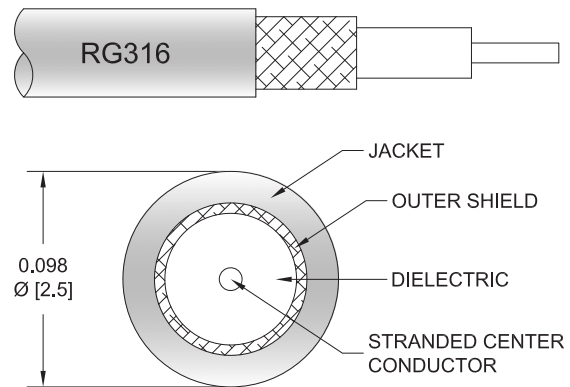


#### Configuration

- Connector 1: SMC Plug
- Connector 2: MMCX Jack
- Cable Type: RG316
- Coax Flex Type: Flexible

#### Features

- Max Frequency 3 GHz
- 69% Phase Velocity
- FEP Jacket



#### Applications

- General Purpose
- Laboratory Use

#### Description

The SMC plug to MMCX jack 200 cm cable using RG-316 coax, part number FMC00324-200CM, from Fairview Microwave is in-stock and ships same day. This Fairview SMC to MMCX cable assembly has a plug to jack gender configuration with 50 ohm flexible RG316 coax. Fairview Microwave's flexible RF cable assemblies are ideal for applications where tight bends and continual flexure are required. The FMC00324-200CM SMC plug to MMCX jack cable assembly operates to 3 GHz.

Custom versions of most RF cable assemblies can be built and shipped same day. Custom cable assembly lengths can be obtained by specifying the desired length on the web site at time of order or by contacting a sales representative. Other RF cable assembly value added services including connector orientation or clocking, heat shrink booting and labeling are also available. RF testing can also be performed to document the electrical performance of your cable assembly.

#### Electrical Specifications

| Description             | Minimum | Typical      | Maximum | Units        |
|-------------------------|---------|--------------|---------|--------------|
| Frequency Range         | DC      |              | 3       | GHz          |
| VSWR                    |         |              | 1.4:1   |              |
| Velocity of Propagation |         | 69           |         | %            |
| Capacitance             |         | 29.4 [96.46] |         | pF/ft [pF/m] |
| Operating Voltage (AC)  |         |              | 250     | Vrms         |
| Jacket Spark            |         |              | 2,000   | Vrms         |

#### Specifications by Frequency

| Description           | F1   | F2   | F3   | F4   | F5 | Units |
|-----------------------|------|------|------|------|----|-------|
| Frequency             | 0.1  | 0.25 | 0.5  | 1    | 3  | GHz   |
| Insertion Loss (Typ.) | 0.92 | 1.24 | 1.76 | 2.69 | 4  | dB    |

## SMC Plug to MMCX Jack Cable RG-316 Coax in 200 CM

### FMC00324-200CM



#### Electrical Specification Notes:

The Insertion Loss data above is based on the performance specifications of the coax cable and connectors used in this assembly. The Insertion Loss includes an estimated insertion loss of 0.1 dB per connector.

#### Mechanical Specifications

##### Cable Assembly

|                |                   |
|----------------|-------------------|
| Length         | 78.74 in [200 cm] |
| Width/Diameter | 0.5 in [12.7 mm]  |

##### Cable

|                                      |                            |
|--------------------------------------|----------------------------|
| Cable Type                           | RG316                      |
| Impedance                            | 50 Ohms                    |
| Inner Conductor Type                 | Stranded                   |
| Inner Conductor Material and Plating | Copper Clad Steel, Silver  |
| Dielectric Type                      | PTFE                       |
| Number of Shields                    | 1                          |
| Shield Layer 1                       | Silver Plated Copper Braid |
| Jacket Material                      | FEP, Tan                   |
| Jacket Diameter                      | 0.102 in [2.59 mm]         |

#### Connectors

| Description                        | Connector 1            | Connector 2            |
|------------------------------------|------------------------|------------------------|
| Type                               | SMC Plug               | MMCX Jack              |
| Specification                      | MIL-STD-348A           | BS EN 122340           |
| Impedance                          | 50 Ohms                | 50 Ohms                |
| Configuration                      | Straight               | Straight               |
| Contact Material and Plating       | Beryllium Copper, Gold | Beryllium Copper, Gold |
| Contact Plating Specification      | 50 µin minimum         | 30 µin minimum         |
| Dielectric Type                    | PTFE                   | PTFE                   |
| Body Material and Plating          | Brass, Gold            | Brass, Gold            |
| Body Plating Specification         | 3 µin minimum          | 3 µin minimum          |
| Coupling Nut Material and Plating  | Brass, Gold            |                        |
| Coupling Nut Plating Specification | 3 µin minimum          |                        |
| Hex Size                           | 1/4 inch               |                        |

#### Environmental Specifications

|                             |                   |
|-----------------------------|-------------------|
| Operating Range Temperature | -55 to +200 deg C |
|-----------------------------|-------------------|

#### Compliance Certifications (see [product page](#) for current document)

#### Plotted and Other Data

Notes:

## SMC Plug to MMCX Jack Cable RG-316 Coax in 200 CM

**FMC00324-200CM**



### Typical Performance Data

### How to Order

Part Number Configuration:

**FMC00324**

**- xx**

**uu**

Unit of Measure:

cm = Centimeters

<blank> = Inches

Length

Base Number

Example: FMC00324-12 = 12 inches long cable  
FMC00324-100cm = 100 cm long cable

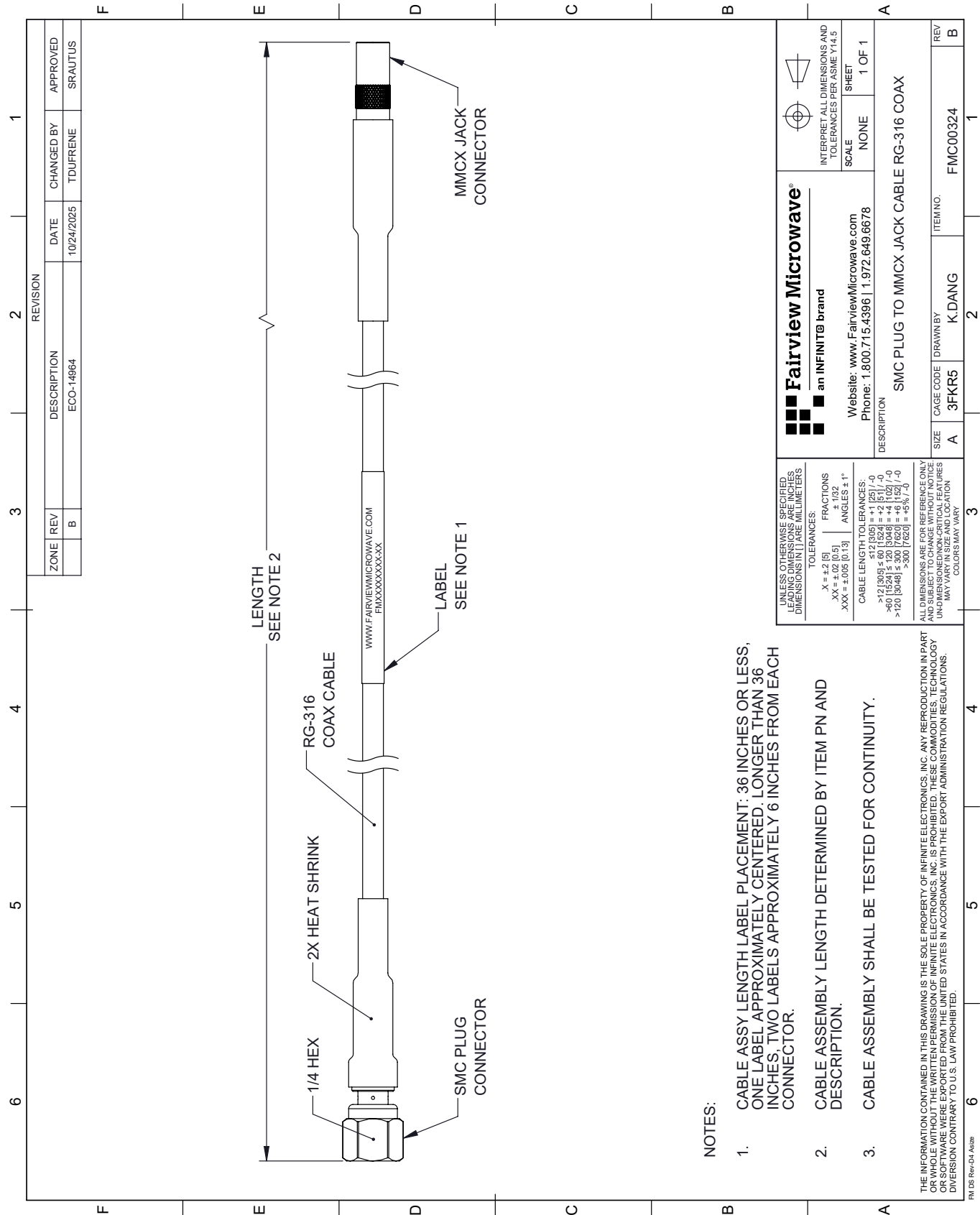
SMC Plug to MMCX Jack Cable RG-316 Coax in 200 CM from Fairview Microwave is in-stock and available to ship same-day. All of our RF/microwave products are available off-the-shelf from our ISO 9001:2008 certified facilities in Lewisville, Texas. Fairview Microwave is RF on-demand.

For additional information on this product, please click the following link: [SMC Plug to MMCX Jack Cable RG-316 Coax in 200 CM FMC00324-200CM](#)

URL: <https://www.fairviewmicrowave.com/smc-plug-mmcx-jack-cable-rg316-coax-fmc00324-200cm-p.aspx>

The information contained within this document is accurate to the best of our knowledge and representative of the part described herein. It may be necessary to make modifications to the part and/or the documentation of the part in order to implement improvements. Fairview Microwave reserves the right to make such changes as required. Unless otherwise stated, all specifications are nominal. Fairview Microwave does not make any representation or warranty regarding the suitability of the part described herein for any particular purpose, and Fairview Microwave does not assume liability arising out of the use of any part or document.

FMC00324-200CM CAD Drawing
SMC Plug to MMCX Jack Cable RG-316 Coax in 200 CM



NOTES:

- 1. CABLE ASSY LENGTH LABEL PLACEMENT: 36 INCHES OR LESS, ONE LABEL APPROXIMATELY CENTERED, LONGER THAN 36 INCHES, TWO LABELS APPROXIMATELY 6 INCHES FROM EACH CONNECTOR.
- 2. CABLE ASSEMBLY LENGTH DETERMINED BY ITEM PN AND DESCRIPTION.
- 3. CABLE ASSEMBLY SHALL BE TESTED FOR CONTINUITY.

THE INFORMATION CONTAINED IN THIS DRAWING IS THE SOLE PROPERTY OF INFINITE ELECTRONICS, INC. ANY REPRODUCTION IN PART OR WHOLE WITHOUT THE WRITTEN PERMISSION OF INFINITE ELECTRONICS, INC. IS PROHIBITED. THESE COMMODITIES, TECHNOLOGY OR SOFTWARE WERE EXPORTED FROM THE UNITED STATES IN ACCORDANCE WITH THE EXPORT ADMINISTRATION REGULATIONS. DIVISION CONTRARY TO U.S. LAW PROHIBITED.

FM DS Rev-D4 Addn