

Fiber Optic Patch Cable, Simplex SC UPC to ST UPC, SM OS2, 2.0mm LSZH, Yellow-7M



PE3FCA128-7M

Features

- Single Mode OS2 fiber optic cable assembly
- Simplex SC UPC to ST UPC
- Indoor Low smoke zero halogen (LSZH) cable
- Suitable for confined installations where flame resistance is required
- Custom lengths available with the same fast delivery

Applications

- Telecom & Networking
- Data Centers
- Enterprise and Corporate Networks
- Broadcasting & Media Production
- Military & Defense
- Healthcare & Medical Imaging
- Transportation & Rail
- Oil & Gas

Description

The PE3FCA128-7M fiber optic patch cord is a robust and versatile fiber optic cable assembly from Pasternack designed for high-performance data transmission in various environments. Equipped with Simplex SC UPC to ST UPC connectors, this simplex OS2 Single Mode fiber optic patch cable is optimized for indoor use, featuring a Low smoke zero halogen (LSZH) cable that ensures compliance with fire and safety standards. The 2.0mm diameter construction, combined with its Yellow color, makes it easy to identify in complex setups, while its operating temperature range of -20°C to +70C and storage temperature of -40C° to +70C provides reliable performance across diverse conditions.

The Pasternack PE3FCA128-7M fiber optic jumper is ideal for applications where reliable, long-range data connectivity is critical. The Single Mode design of the OS2 fiber offers stable, high-speed transmission over long distances, making it suitable for Telecom & Networking, Data Centers, and Corporate Networks. With the flexibility of custom lengths, Pasternack's PE3FCA128-7M fiber optic assembly can be tailored to meet specific installation requirements, ensuring efficient network management in high-density, fiber setups without compromising on delivery time or quality.

Beyond networking, the Pasternack PE3FCA128-7M fiber patch cord supports an array of industry applications, from Broadcasting & Media Production and Military & Defense to Healthcare & Medical Imaging. This fiber assembly offers a reliable and durable solution for any setting requiring high-quality data transmission in a controlled, indoor environment. For further information on similar fiber optic products, our expert technical support and trained sales team can get you the ideal fiber optic simplex cable assembly as per your requirements.

Configuration

Function	Patch
Cable Type	Simplex Single Mode
Mode	Single Mode
Mode Class	OS2
Fiber Diameter	9/125 um
Connection 1 Type	SC
Connection 1 Polish	UPC
Connection 2 Type	ST
Connection 2 Polish	UPC
Cable Color	Yellow

Optical Specifications

Description	Minimum	Typical	Maximum	Units
Return Loss	50			dB

Fiber Optic Patch Cable, Simplex SC UPC to ST
UPC, SM OS2, 2.0mm LSZH, Yellow-7M



PE3FCA128-7M

Optical Specifications

Description	Minimum	Typical	Maximum	Units
Insertion Loss			0.3	dB

Mechanical Specifications

Cable Assembly

Length	7 m [275.59 in]
Width/Diameter	2 mm

Cable

Cable Type	Patch
Static Bend Radius	15 mm
Dynamic Bend Radius	30 mm
Max Crush Resistance, Short Term (N/100mm)	200
Max Crush Resistance, Long Term (N/100mm)	50

Connectors

Description	Connector 1	Connector 2
Type	SC	ST
Connector Polish	UPC	UPC

Environmental Specifications

Operating Range Temperature	-20 to +70 deg C
Storage Range Temperature	-40 to +70 deg C
Ingress Protection (IP) Rating	Non-Rated

Compliance Certifications (see [product page](#) for current document)

Plotted and Other Data

Notes:

Fiber Optic Patch Cable, Simplex SC UPC to ST UPC, SM OS2, 2.0mm LSZH, Yellow-7M



PE3FCA128-7M

Typical Performance Data

How to Order

Part Number Configuration:

PE3FCA128

- **xx**

uu

Unit of Measure:

M = Meters

<blank> = Inches

Length

Base Number

Example: PE3FCA128-12 = 12 inches long cable
PE3FCA128-100cm = 100 cm long cable

Fiber Optic Patch Cable, Simplex SC UPC to ST UPC, SM OS2, 2.0mm LSZH, Yellow-7M from Pasternack Enterprises has same day shipment for domestic and International orders. Our RF, microwave and millimeter wave products maintain a 99.4% availability and are part of the broadest selection in the industry.

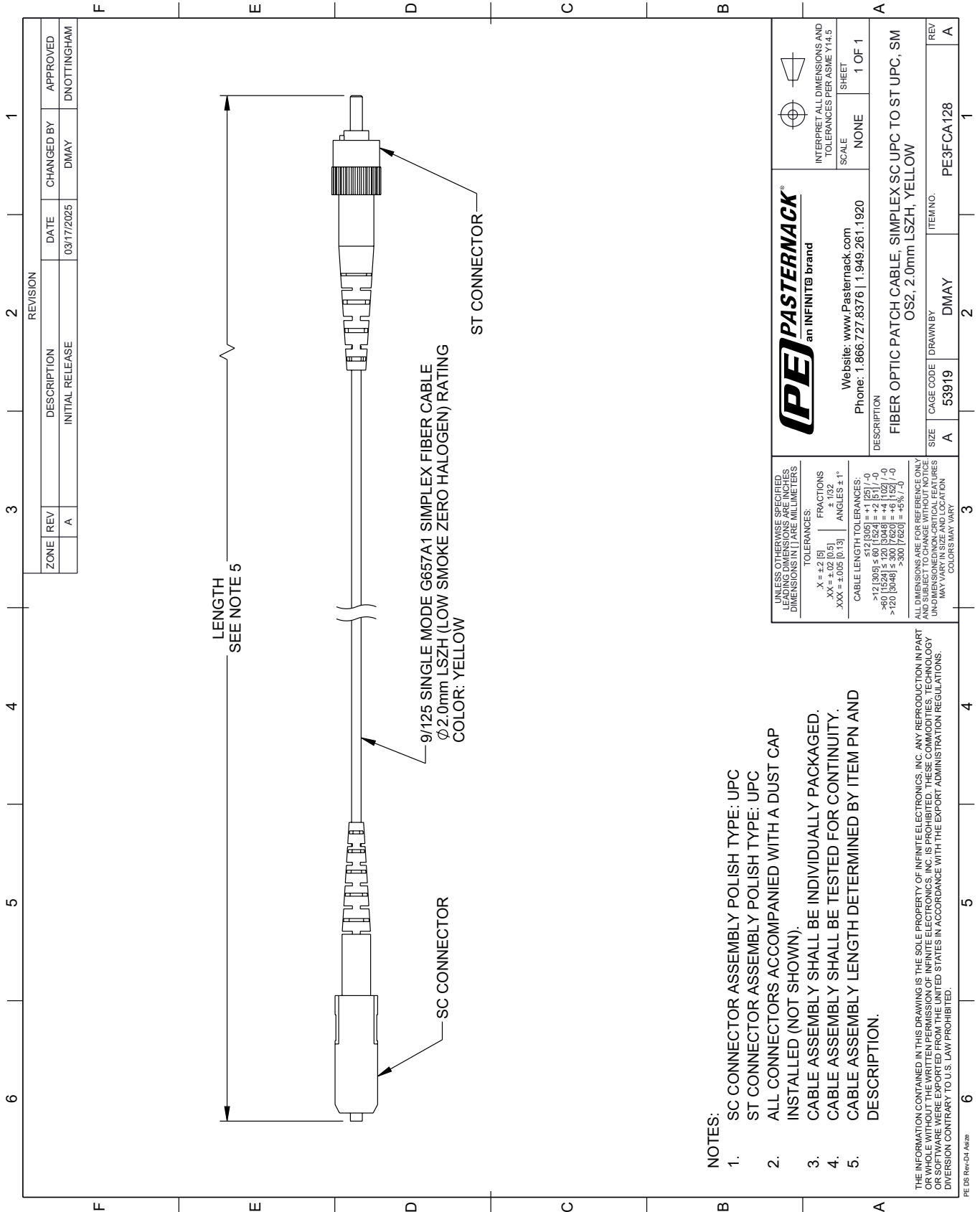
Click the following link (or enter part number in "SEARCH" on website) to obtain additional part information including price, inventory and certifications: [Fiber Optic Patch Cable, Simplex SC UPC to ST UPC, SM OS2, 2.0mm LSZH, Yellow-7M PE3FCA128-7M](#)

URL: <https://www.pasternack.com/sc-st-single-mode-st-fiber-optic-cable-assembly-pe3fca128-7m-p.aspx>

The information contained within this document is accurate to the best of our knowledge and representative of the part described herein. It may be necessary to make modifications to the part and/or the documentation of the part in order to implement improvements. Pasternack Enterprises reserves the right to make such changes as required. Unless otherwise stated, all specifications are nominal. Pasternack Enterprises does not make any representation or warranty regarding the suitability of the part described herein for any particular purpose, and Pasternack Enterprises does not assume liability arising out of the use of any part or document.

PE3FCA128-7M CAD Drawing

Fiber Optic Patch Cable, Simplex SC UPC to ST UPC, SM OS2, 2.0mm LSZH, Yellow-7M





NOTES:

- SC CONNECTOR ASSEMBLY POLISH TYPE: UPC
- ST CONNECTOR ASSEMBLY POLISH TYPE: UPC
- ALL CONNECTORS ACCOMPANIED WITH A DUST CAP INSTALLED (NOT SHOWN).
- CABLE ASSEMBLY SHALL BE INDIVIDUALLY PACKAGED.
- CABLE ASSEMBLY SHALL BE TESTED FOR CONTINUITY.
- CABLE ASSEMBLY LENGTH DETERMINED BY ITEM PN AND DESCRIPTION.

THE INFORMATION CONTAINED IN THIS DRAWING IS THE SOLE PROPERTY OF INFINITE ELECTRONICS, INC. ANY REPRODUCTION IN PART OR WHOLE WITHOUT THE WRITTEN PERMISSION OF INFINITE ELECTRONICS, INC. IS PROHIBITED. THESE COMMODITIES, TECHNOLOGY OR SOFTWARE WERE EXPORTED FROM THE UNITED STATES IN ACCORDANCE WITH THE EXPORT ADMINISTRATION REGULATIONS. DIVERSION CONTRARY TO U.S. LAW PROHIBITED.

PE DS Rev-04 Add2

 <p>an INFINIT[®] brand</p> <p>Website: www.Pasternack.com Phone: 1.866.727.8376 1.949.261.1920</p>		<p>INTERPRET ALL DIMENSIONS AND TOLERANCES PER ASME Y14.5</p> <p>SCALE NONE</p> <p>SHEET 1 OF 1</p>
	<p>DESCRIPTION</p> <p>FIBER OPTIC PATCH CABLE: SIMPLEX SC UPC TO ST UPC, SM OS2, 2.0mm LSZH, YELLOW</p>	
<p>UNLESS OTHERWISE SPECIFIED, LEADING DIMENSIONS ARE IN INCHES. DIMENSIONS IN [] ARE MILLIMETERS.</p> <p>TOLERANCES:</p> <p>.X = ±.2 [5] FRACTIONS ± 1/32</p> <p>.XX = ±.02 [0.5] ANGLES ± 1°</p> <p>.XXX = ±.005 [0.13]</p> <p>CABLE LENGTH TOLERANCES:</p> <p>>12 [305] ≤ 60 [1524] = ±1 [25] / -0</p> <p>>60 [1524] ≤ 120 [3048] = ±4 [102] / -0</p> <p>>120 [3048] ≤ 300 [7620] = ±5% / -0</p>	<p>ALL DIMENSIONS ARE FOR REFERENCE ONLY. UNDIMENSIONED/UNCLEAR FEATURES MAY VARY IN SIZE AND LOCATION. COLORS MAY VARY.</p>	<p>REV A</p> <p>ITEM NO. PE3FCA128</p> <p>REV A</p>