

WR-62 Waveguide 30 dB Broadwall Coupler, UG Cover Flange,
N-Type Female Coupled Port, 11.9 GHz to 18 GHz, Copper

Waveguide Couplers Technical Data Sheet

PEW62CP001-30

The PEW62CP001-30 is a WR-62 Directional Broadwall waveguide coupler with N female coupled port that operates in the frequency range of 11.9 to 18 GHz. This Waveguide component has a maximum VSWR of 1.25:1. These designs are made of painted copper alloy and incorporate a broad wall configuration that result in a mid-band nominal coupling value of 10, 20, 30, 40 or 50 dB. Common applications for this component would be where power measurements are required within a system for measuring/sampling power or frequency monitoring with minimal signal loss to the main transmission line. Pasternack offers a complete family of waveguide Crossguide and Broadwall couplers that are in-stock and ship same day.

Features

- Three Port Broadwall Waveguide Coupler
- 30±0.7 dB Nominal Coupling Level
- Integrated N Female Connector coupled port
- 11.9 GHz to 18 GHz Frequency Range
- Main Line VSWR < 1.1:1
- Max Power 200W (CW)

Applications

- Test Benches
- Radar
- Satellite
- Microwave Radio
- Attenuation Measurements
- Power Measurements
- Source Leveling

Electrical Specifications

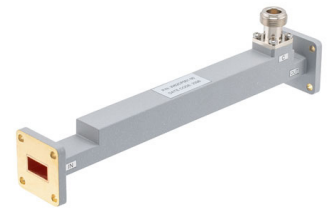
Description	Minimum	Typical	Maximum	Units
Frequency Range	11.9		18	GHz
Coupler				
Nominal Coupling Level		30		dB
Directivity	30			dB
Insertion Loss			0.15	dB
Main Line VSWR			1.1:1	
Secondary Line VSWR			1.25:1	
Coupling Flatness			±0.7	dB
Input Power (CW)			200	Watts
Input Power, Peak			120	kWatts

Mechanical Specifications

Size

Length	7.87 in [199.9 mm]
Width	1.31 in [33.27 mm]
Height	1.31 in [33.27 mm]
Weight	0.57 lbs [258.55 g]
Flange Type	UG Cover

Click the following link (or enter part number in "SEARCH" on website) to obtain additional part information including price, inventory and certifications: [WR-62 Waveguide 30 dB Broadwall Coupler, UG Cover Flange, N-Type Female Coupled Port, 11.9 GHz to 18 GHz, Copper PEW62CP001-30](#)



WR-62 Waveguide 30 dB Broadwall Coupler, UG Cover Flange,
N-Type Female Coupled Port, 11.9 GHz to 18 GHz, Copper

Waveguide Couplers Technical Data Sheet

PEW62CP001-30

Flange Material and Plating
RF Connector Type

Copper, Passivated
N Female

Coupler Body Material and Plating

Copper, Passivated

Environmental Specifications

Compliance Certifications (see [product page](#) for current document)

Plotted and Other Data

Notes:

WR-62 Waveguide 30 dB Broadwall Coupler, UG Cover Flange, N-Type Female Coupled Port, 11.9 GHz to 18 GHz, Copper from Pasternack Enterprises has same day shipment for domestic and International orders. Our RF, microwave and millimeter wave products maintain a 99.4% availability and are part of the broadest selection in the industry.

Click the following link (or enter part number in "SEARCH" on website) to obtain additional part information including price, inventory and certifications: [WR-62 Waveguide 30 dB Broadwall Coupler, UG Cover Flange, N-Type Female Coupled Port, 11.9 GHz to 18 GHz, Copper PEW62CP001-30](#)

URL: <https://www.pasternack.com/wr62-waveguide-30db-broadwall-coupler-ug-18mhz-pew62cp001-30-p.aspx>

The information contained in this document is accurate to the best of our knowledge and representative of the part described herein. It may be necessary to make modifications to the part and/or the documentation of the part, in order to implement improvements. Pasternack reserves the right to make such changes as required. Unless otherwise stated, all specifications are nominal. Pasternack does not make any representation or warranty regarding the suitability of the part described herein for any particular purpose, and Pasternack does not assume any liability arising out of the use of any part or documentation.

PEW62CP001-30 CAD Drawing

WR-62 Waveguide 30 dB Broadwall Coupler, UG Cover Flange,
N-Type Female Coupled Port, 11.9 GHz to 18 GHz, Copper

