

6

5

4

3

2

1

F

E

D

C

B

A

F

E

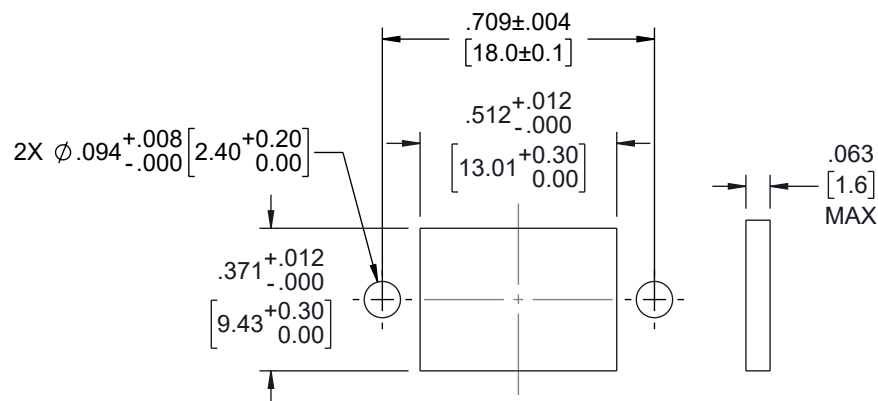
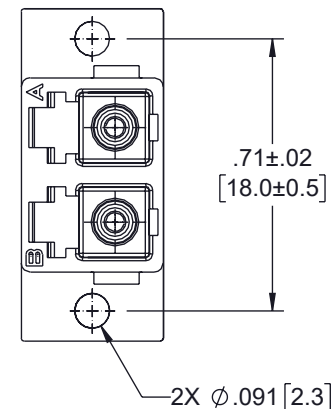
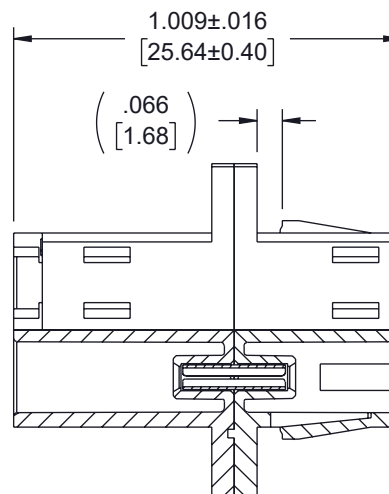
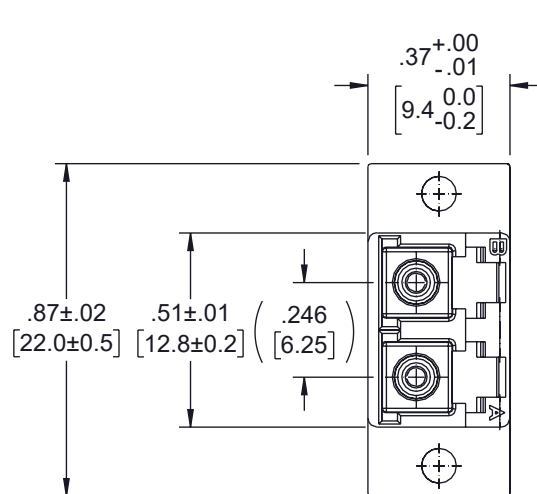
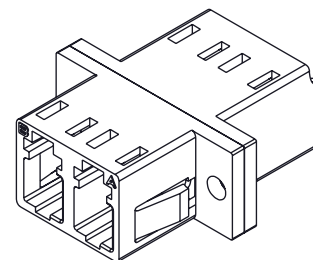
D

C

B

A

| REVISION | | | | |
|----------|-----|-----------------|------------|------------|
| ZONE | REV | DESCRIPTION | DATE | CHANGED BY |
| | A | INITIAL RELEASE | 12/10/2024 | HBAKKE |
| | | | | NOTTINGHAM |

RECOMMENDED
PANEL CUTOUTPANEL
THICKNESS

| ITEM NUMBER | HOUSING COLOR |
|-------------|--------------------|
| FOA-801-BLU | BLUE SM PC |
| FOA-801-GRN | GREEN SM APC |
| FOA-801-BGE | BEIGE OM1 OR OM2 |
| FOA-801 | BLACK MULTIMODE |
| FOA-801-AQU | AQUA OM3 |
| FOA-801-HVI | HEATHER VIOLET OM4 |
| FOA-801-LGR | LIME GREEN OM5 |

NOTES:

- PARTS SHALL BE INDIVIDUALLY PACKAGED AND LABELED.

THE INFORMATION CONTAINED IN THIS DRAWING IS THE SOLE PROPERTY OF INFINITE ELECTRONICS, INC. ANY REPRODUCTION IN PART OR WHOLE WITHOUT THE WRITTEN PERMISSION OF INFINITE ELECTRONICS, INC. IS PROHIBITED. THESE COMMODITIES, TECHNOLOGY OR SOFTWARE WERE EXPORTED FROM THE UNITED STATES IN ACCORDANCE WITH THE EXPORT ADMINISTRATION REGULATIONS. DIVERSION CONTRARY TO U.S. LAW PROHIBITED.

6

5

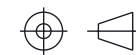
4

3

2

1

| | |
|--|---------------------|
| UNLESS OTHERWISE SPECIFIED LEADING DIMENSIONS ARE INCHES DIMENSIONS IN [] ARE MILLIMETERS | |
| TOLERANCES: | |
| X = ±.2 [5] | FRACTIONS ± 1/32 |
| XX = ±.02 [0.5] | ANGLES ± 1° |
| XXX = ±.005 [0.13] | |
| CABLE LENGTH TOLERANCES: | |
| ≤12 [305] = +1 [25] / -0 | |
| >12 [305] ≤ 60 [1524] = +2 [51] / -0 | |
| >60 [1524] ≤ 120 [3048] = +4 [102] / -0 | |
| >120 [3048] ≤ 300 [7620] = +6 [152] / -0 | |
| >300 [7620] = +5% / -0 | |
| ALL DIMENSIONS ARE FOR REFERENCE ONLY AND SUBJECT TO CHANGE WITHOUT NOTICE. UN-DIMENSIONED/NON-CRITICAL FEATURES MAY VARY IN SIZE AND LOCATION COLORS MAY VARY | |

L-com
an INFINIT® brandWebsite: www.L-com.com
Phone: 1.800.341.5266 | 1.978.682.6936INTERPRET ALL DIMENSIONS AND
TOLERANCES PER ASME Y14.5

| SCALE | SHEET |
|-------|--------|
| NONE | 1 OF 1 |

DESCRIPTION

LC DUPLEX ADAPTER W/ FLANGE, ZR SLEEVE, HEATHER
VIOLET HOUSING W/ PLASTIC SPRING

| SIZE | CAGE CODE | DRAWN BY | ITEM NO. | REV |
|------|-----------|----------|-------------|-----|
| A | 43321 | HBAKKE | FOA-801-HVI | A |