

TRB 3-Lug Jack Insulated Bulkhead to TRB 3-Lug Jack Insulated Bulkhead 1553 Cable 36" Using 124 Ohm TWC-124-2 Twinax

LC3MSA00664-36



Configuration

- Connector 1: TRB 3-Lug Jack Bulkhead Insulated
- Connector 2: TRB 3-Lug Jack Bulkhead Insulated
- Cable Type: TWC-124-2

Features

- 124 ohms
- Twinaxial
- MIL-STD-1553B
- -40°C to +80°C
- Lead Free Solder
- Standard and Custom Lengths Available

Applications

- MIL-STD-1553B Applications
- Data Transmission

Description

L-com's LC3MSA00664-36 is a TRB 3-Lug jack insulated bulkhead to TRB 3-Lug jack insulated bulkhead 1553 cable 36" using 124 Ohm TWC-124-2 twinax and ships same-day. These flexible RF cable assemblies are ideal for applications where flexure is required. Our L-com TRB 3-Lug to TRB 3-Lug cable assembly has a jack to jack gender configuration with 78 Ohm flexible TWC-124-2 series coax and operates to 500 MHz.

Custom versions of this TRB 3-Lug jack to TRB 3-Lug jack cable, along with the rest of L-com's other RF assemblies, can also be built and shipped same day. Other available RF cable assembly value added services from L-com include connector orientation or clocking, heat shrink booting and custom labeling. RF testing can also be performed to document the electrical performance of your cable assembly. Contact a sales representative for testing or custom RF cable quotes. Part number LC3MSA00664-36 L-com TRB 3-Lug Jack Insulated Bulkhead to TRB 3-Lug Jack Insulated Bulkhead 1553 Cable 36" Using 124 Ohm TWC-124-2 Twinax data sheet PDF includes details of the RF product specifications, CAD drawing(s) and dimensions below.

Electrical Specifications

| Description | Minimum | Typical | Maximum | Units |
|------------------------|---------|--------------|---------|--------------|
| Frequency Range | DC | | 500 | MHz |
| Capacitance | | 12.3 [40.35] | | pF/ft [pF/m] |
| Operating Voltage (AC) | | | 1,000 | Vrms |

Specifications by Frequency

| Description | F1 | F2 | F3 | F4 | F5 | Units |
|-----------------------|-------|-------|-------|-------|-------|-------|
| Frequency | 10 | 50 | 100 | 200 | 500 | MHz |
| Insertion Loss (Typ.) | 0.251 | 0.308 | 0.353 | 0.416 | 0.542 | dB |

Electrical Specification Notes:

The Insertion Loss data above is based on the performance specifications of the coax and connectors used in this assembly. The Insertion Loss includes an estimated insertion loss of 0.1 dB per connector.

TRB 3-Lug Jack Insulated Bulkhead to TRB 3-Lug Jack Insulated Bulkhead 1553 Cable 36" Using 124 Ohm TWC-124-2 Twinax

LC3MSA00664-36



Mechanical Specifications

Cable Assembly

| | |
|---------|------------------------|
| Length* | 36 in [914.4 mm] |
| Weight | 0.23329 lbs [105.82 g] |

Cable

| | |
|--------------------------------------|----------------------|
| Cable Type | TWC-124-2 |
| Impedance | 124 Ohms |
| Inner Conductor Type | Stranded |
| Inner Conductor Material and Plating | Copper, Silver |
| Dielectric Type | PE |
| Shield Layer 1 | Silver Plated Copper |
| Jacket Material | PVC, Blue |

| | |
|------------------------------|--------------------|
| One Time Minimum Bend Radius | 1.25 in [31.75 mm] |
|------------------------------|--------------------|

Connectors

| Description | Connector 1 | Connector 2 |
|---------------------------------------|-----------------------------------|-----------------------------------|
| Type | TRB 3-Lug Jack Bulkhead Insulated | TRB 3-Lug Jack Bulkhead Insulated |
| Specification | MIL-STD-1553 | MIL-STD-1553 |
| Impedance | 78 Ohms | 78 Ohms |
| Contact Material and Plating | Bronze, Gold 30 micro inches | Bronze, Gold 30 micro inches |
| Contact Plating Specification | ASTM-B-488 | ASTM-B-488 |
| Dielectric Type | Teflon | Teflon |
| Outer Conductor Material and Plating | Phosphor Bronze, Gold | Phosphor Bronze, Gold |
| Outer Conductor Plating Specification | 30 micro inches | 30 micro inches |
| Body Material and Plating | Brass, Nickel | Brass, Nickel |
| Body Plating Specification | ASTM-B-733 | ASTM-B-733 |

Environmental Specifications

Temperature

| | |
|-----------------|------------------|
| Operating Range | -40 to +80 deg C |
|-----------------|------------------|

Compliance Certifications (see [product page](#) for current document)

Plotted and Other Data

Notes:

TRB 3-Lug Jack Insulated Bulkhead to TRB 3-Lug Jack Insulated Bulkhead 1553 Cable 36" Using 124 Ohm TWC-124-2 Twinax

LC3MSA00664-36



How to Order

Part Number Configuration:

LC3MSA00664

- **xx**

uu

Unit of Measure:
cm = Centimeters
<blank> = Inches
Length
Base Number

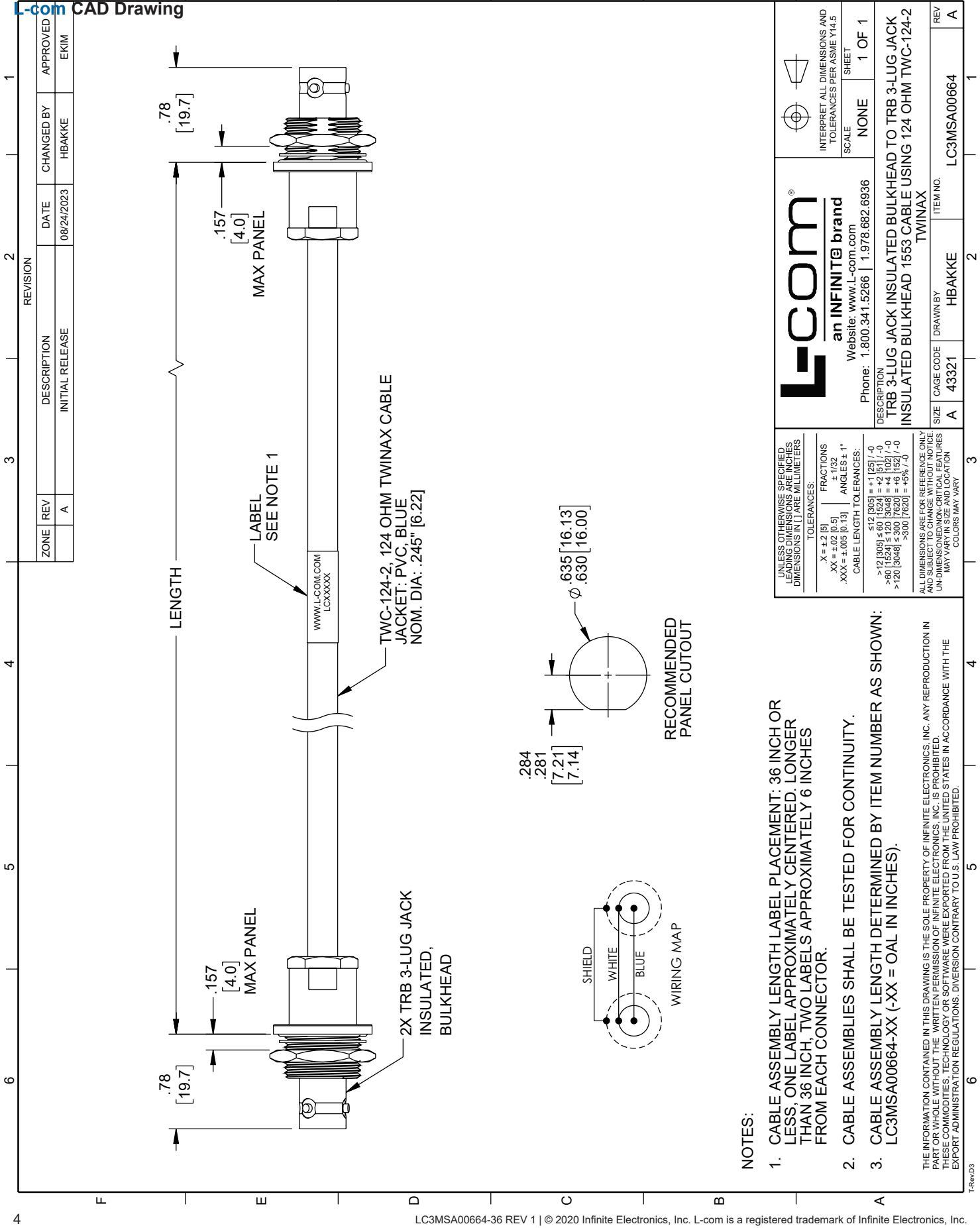
Example: LC3MSA00664-12 = 12 inches long cable
LC3MSA00664-100cm = 100 cm long cable

TRB 3-Lug Jack Insulated Bulkhead to TRB 3-Lug Jack Insulated Bulkhead 1553 Cable 36" Using 124 Ohm TWC-124-2 Twinax from L-com has same day shipment for domestic and International orders. L-com is a leading manufacturer of wired and wireless connectivity products and committed to in-stock availability and same day shipping. Our portfolio includes coaxial cable assemblies, connectors, adapters and custom products as well as lightning and surge protectors, NEMA rated enclosures, and an RF product line which includes antennas, amplifiers, passive, and active components.

The information contained within this document is accurate to the best of our knowledge and representative of the part described herein. It may be necessary to make modifications to the part and/or the documentation of the part in order to implement improvements. L-com reserves the right to make such changes as required. Unless otherwise stated, all specifications are nominal. L-com does not make any representation or warranty regarding the suitability of the part described herein for any particular purpose, and L-com does not assume liability arising out of the use of any part or document contained within this document is accurate to the best of our knowledge and representative of the part described herein. It may be necessary to make modifications to the part and/or the documentation of the part in order to implement improvements. L-com reserves the right to make such changes as required. Unless otherwise stated, all specifications are nominal. L-com does not make any representation or warranty regarding the suitability of the part described herein for any particular purpose, and L-com does not assume liability arising out of the use of any part or document.

TRB 3-Lug Jack Insulated Bulkhead to TRB 3-Lug Jack Insulated Bulkhead
1553 Cable 36" Using 124 Ohm TWC-124-2 Twinax

L-com CAD Drawing



L-com
an INFINITE brand
Website: www.L-com.com
Phone: 1.800.341.5266 | 1.978.682.6936

DESCRIPTION
TRB 3-LUG JACK INSULATED BULKHEAD TO TRB 3-LUG JACK
INSULATED BULKHEAD 1553 CABLE USING 124 OHM TWC-124-2
TWINAX

INTERPRET ALL DIMENSIONS AND
TOLERANCES PER ASME Y14.5

SCALE
NONE

SHEET
1 OF 1

SIZE
A

CAGE CODE
43321

DRAWN BY
HBAKKE

ITEM NO.
LC3MSA00664

REV
A

UNLESS OTHERWISE SPECIFIED,
LEADING DIMENSIONS ARE IN INCHES
DIMENSIONS IN [] ARE MILLIMETERS

TOLERANCES:

| FRACTIONS | ANGLES |
|---------------------|--------|
| .X = ±.2 [5] | ± 1/32 |
| .XX = ±.02 [0.5] | ± 1/32 |
| .XXX = ±.005 [0.13] | ± 1/32 |

CABLE LENGTH TOLERANCES:

| SIZE | TOLERANCES |
|---------------------------|---------------|
| ≤ 12 [305] | ± 1/32 [0.76] |
| > 12 [305] ≤ 60 [1524] | ± 1/16 [1.58] |
| > 60 [1524] ≤ 120 [3048] | ± 1/8 [3.18] |
| > 120 [3048] ≤ 300 [7620] | ± 1/4 [6.35] |
| > 300 [7620] | ± 1/2 [12.7] |

ALL DIMENSIONS ARE FOR REFERENCE ONLY
AND SUBJECT TO CHANGE WITHOUT NOTICE
UN-DIMENSIONED NON-CRITICAL FEATURES
MAY VARY IN CONSTRUCTION
COLORS MAY VARY