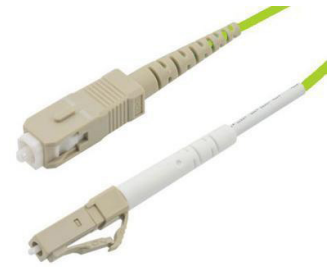


Fiber Optic Patch Cable, Simplex LC UPC to SC UPC, MM OM5, 2.0mm Plenum, Lime Green-3M



PE3FCA112-3M

Features

- Multimode OM5 fiber optic cable assembly
- Simplex LC UPC to SC UPC
- Indoor Plenum (OFNP) cable
- Suitable for wall, ceiling, conduits, and between buildings
- Custom lengths available with the same fast delivery

Applications

- Telecom & Networking
- Data Centers
- Enterprise and Corporate Networks
- Broadcasting & Media Production
- Military & Defense
- Healthcare & Medical Imaging
- Transportation & Rail
- Oil & Gas

Description

The PE3FCA112-3M fiber optic patch cord is a high-performance OM5 fiber optic cable assembly from Pasternack, tailored for superior data transmission in high-demand environments. Equipped with simplex LC UPC to SC UPC connectors, this OM5 simplex fiber optic patch cable is optimized for indoor use and comes with a Plenum (OFNP) rating that adheres to fire and safety requirements. With a 2.0mm diameter and Lime Green color, this fiber optic jumper is easily identifiable in complex network setups. With an operating temperature range of 0°C to 60°C and storage temperature of -20°C to 60°C, this fiber optic cable assembly is built to perform reliably across diverse conditions.

As an OM5 fiber optic jumper, Pasternack's PE3FCA112-3M is designed for ultra-high-speed, high-bandwidth data transmission, supporting greater distances and faster speeds than OM3 and OM4 fiber. This makes it ideal for Telecom & Networking, Data Centers, and Enterprise and Corporate Networks, where extended reach and top-tier fiber performance is crucial. Custom lengths are available to meet specific installation needs, providing flexibility for various setups while maintaining quick delivery and consistent quality.

Beyond standard networking, the Pasternack PE3FCA112-3M OM5 fiber patch cord supports specialized applications in industries like Broadcasting & Media Production, Military & Defense, and Healthcare & Medical Imaging. This fiber assembly delivers a versatile and durable solution for any setup requiring robust, high-speed data transmission in controlled indoor environments. For further information on similar fiber optic products, our expert technical support and trained sales team can get you the ideal fiber optic simplex cable assembly as per your requirements.

Configuration

Function	Patch
Cable Type	Simplex Multimode
Mode	Multimode
Mode Class	OM5
Fiber Diameter	50/125 um
Connection 1 Type	LC
Connection 1 Polish	UPC
Connection 2 Type	SC
Connection 2 Polish	UPC
Cable Color	Lime Green

Optical Specifications

Description	Minimum	Typical	Maximum	Units
Return Loss	30			dB

Fiber Optic Patch Cable, Simplex LC UPC to SC
UPC, MM OM5, 2.0mm Plenum, Lime Green-3M



PE3FCA112-3M

Optical Specifications

Description	Minimum	Typical	Maximum	Units
Insertion Loss			0.3	dB

Mechanical Specifications

Cable Assembly

Length	3 m [118.11 in]
Width/Diameter	2 mm
Weight	498.95 g [1.1 lbs]

Cable

Cable Type	Patch
Static Bend Radius	15 mm
Dynamic Bend Radius	30 mm
Max Crush Resistance, Short Term (N/100mm)	200
Max Crush Resistance, Long Term (N/100mm)	50

Connectors

Description	Connector 1	Connector 2
Type	LC	SC
Connector Polish	UPC	UPC

Environmental Specifications

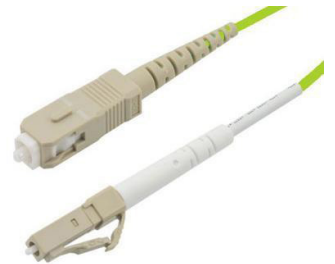
Operating Range Temperature	0 to +60 deg C
Storage Range Temperature	-20 to +60 deg C
Ingress Protection (IP) Rating	Non-Rated

Compliance Certifications (see [product page](#) for current document)

Plotted and Other Data

Notes:

Fiber Optic Patch Cable, Simplex LC UPC to SC UPC, MM OM5, 2.0mm Plenum, Lime Green-3M

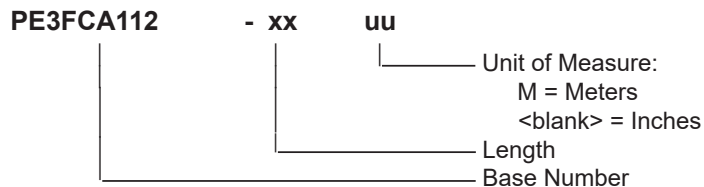


PE3FCA112-3M

Typical Performance Data

How to Order

Part Number Configuration:



Example: PE3FCA112-12 = 12 inches long cable
PE3FCA112-100cm = 100 cm long cable

Fiber Optic Patch Cable, Simplex LC UPC to SC UPC, MM OM5, 2.0mm Plenum, Lime Green-3M from Pasternack Enterprises has same day shipment for domestic and International orders. Our RF, microwave and millimeter wave products maintain a 99.4% availability and are part of the broadest selection in the industry.

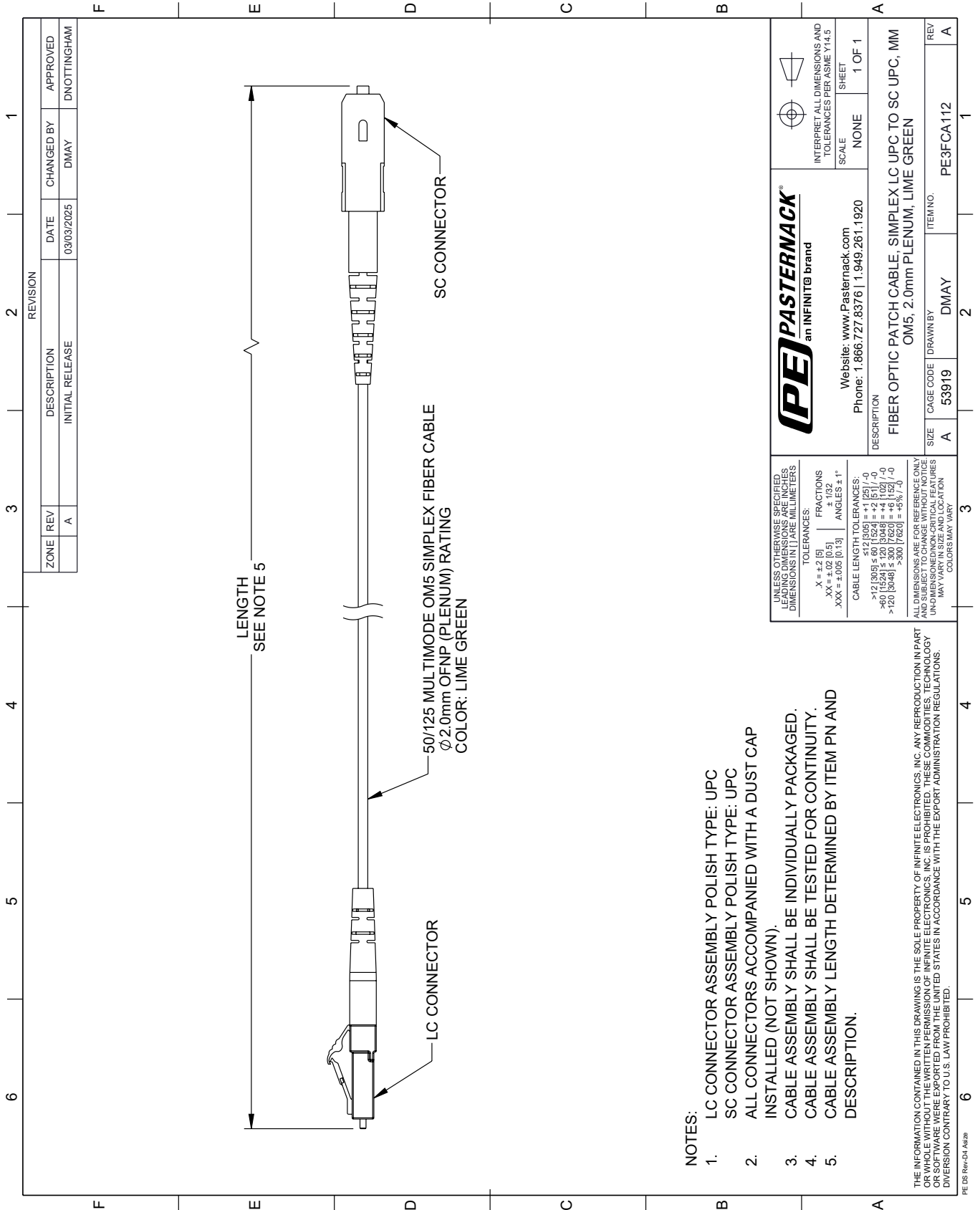
Click the following link (or enter part number in "SEARCH" on website) to obtain additional part information including price, inventory and certifications: [Fiber Optic Patch Cable, Simplex LC UPC to SC UPC, MM OM5, 2.0mm Plenum, Lime Green-3M PE3FCA112-3M](#)

URL: <https://www.pasternack.com/lc-sc-multimode-sc-fiber-optic-cable-assembly-pe3fca112-3m-p.aspx>

The information contained within this document is accurate to the best of our knowledge and representative of the part described herein. It may be necessary to make modifications to the part and/or the documentation of the part in order to implement improvements. Pasternack Enterprises reserves the right to make such changes as required. Unless otherwise stated, all specifications are nominal. Pasternack Enterprises does not make any representation or warranty regarding the suitability of the part described herein for any particular purpose, and Pasternack Enterprises does not assume liability arising out of the use of any part or document.

PE3FCA112-3M CAD Drawing

Fiber Optic Patch Cable, Simplex LC UPC to SC UPC, MM OM5, 2.0mm Plenum, Lime Green-3M



NOTES:

1. LC CONNECTOR ASSEMBLY POLISH TYPE: UPC
2. SC CONNECTOR ASSEMBLY POLISH TYPE: UPC
3. ALL CONNECTORS ACCOMPANIED WITH A DUST CAP INSTALLED (NOT SHOWN).
4. CABLE ASSEMBLY SHALL BE INDIVIDUALLY PACKAGED.
5. CABLE ASSEMBLY SHALL BE TESTED FOR CONTINUITY.
6. CABLE ASSEMBLY LENGTH DETERMINED BY ITEM PN AND DESCRIPTION.

THE INFORMATION CONTAINED IN THIS DRAWING IS THE SOLE PROPERTY OF INFINITE ELECTRONICS, INC. ANY REPRODUCTION IN PART OR WHOLE WITHOUT THE WRITTEN PERMISSION OF INFINITE ELECTRONICS, INC. IS PROHIBITED. THESE COMMODITIES, TECHNOLOGY OR SOFTWARE ARE EXPORTED FROM THE UNITED STATES IN ACCORDANCE WITH THE EXPORT ADMINISTRATION REGULATIONS. DIVERSION CONTRARY TO U.S. LAW PROHIBITED.

PE DS Rev-04 Add2

<p>an INFINITe brand</p> <p>Website: www.Pasternack.com Phone: 1.866.727.8376 1.949.261.1920</p>	<p>INTERPRET ALL DIMENSIONS AND TOLERANCES PER ASME Y14.5</p>
	<p>SCALE: NONE</p> <p>SHEET: 1 OF 1</p>
<p>DESCRIPTION: FIBER OPTIC PATCH CABLE, SIMPLEX LC UPC TO SC UPC, MM OM5, 2.0mm PLENUM, LIME GREEN</p>	
<p>SIZE: A</p>	<p>CAGE CODE: 53919</p>
<p>DRAWN BY: DMAY</p>	<p>ITEM NO.: PE3FCA112</p>
<p>REV: A</p>	<p>REV: A</p>

UNLESS OTHERWISE SPECIFIED, LEADING DIMENSIONS ARE IN INCHES AND DIMENSIONS IN [] ARE MILLIMETERS.

TOLERANCES:
 .X = ±.2 [5]
 .XX = ±.02 [0.5]
 .XXX = ±.005 [0.13]

FRACTIONS: ± 1/32
 ANGLES: ± 1°

CABLE LENGTH TOLERANCES:
 <12 [305] ≤ 60 [1524] = +1 [25] / -0
 >60 [1524] ≤ 120 [3048] = +4 [102] / -0
 >120 [3048] ≤ 300 [7620] = +5% / -0

ALL DIMENSIONS ARE FOR REFERENCE ONLY. UNLESS OTHERWISE SPECIFIED, DIMENSIONS ARE NON-CRITICAL FEATURES. COLORS MAY VARY.