

6

5

4

3

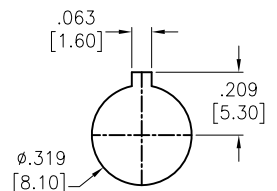
2

1

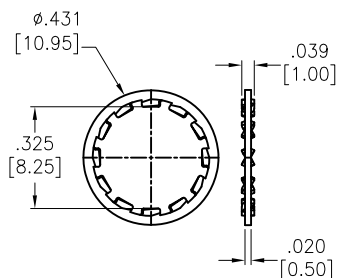
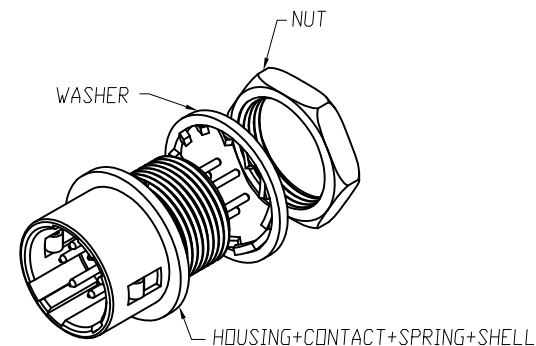
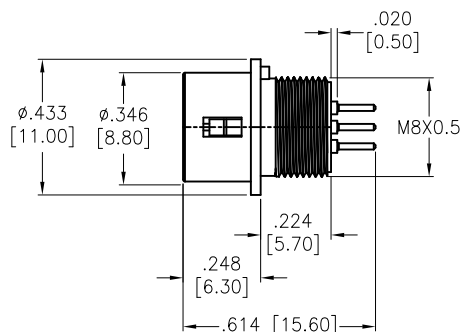
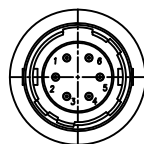
APPROVED: _____

DATE: _____ TITLE: _____

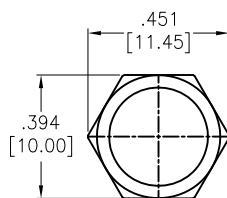
Rev	AWO #	Description	Date	Appr
-		RELEASED	11/23/18	



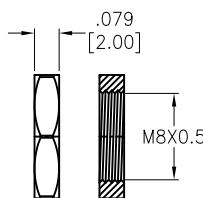
RECOMMENDED PANEL CUT



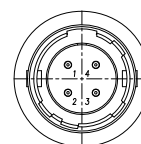
WASHER



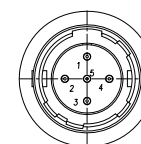
NUT



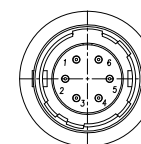
SD-PNNXX-MMLRH-P00-000



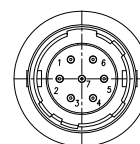
04



05



06



07

SPECIFICATIONS:

Material:

Housing: Nylon 46, rated UL 94V-0, Color: Black

Contacts: Brass, Gold Flash over Nickel

Shell: Zinc Alloy, Nickel plated

Spring: Stainless Steel

Washer: Phosphor Bronze, Nickel plated

Nut: Brass, Nickel plated

Environmental:

Lead free, RoHS compliant

UNLESS OTHERWISE SPECIFIED
ALL DIMENSIONS ARE INCHES [MM]
TOLERANCES: EXCEPT AS NOTED
INCHES HOLES

.X	± .10	Ø.X	± .10
.XX	± .020	Ø.XX	± .015
.XXX	± .015	Ø.XXX	± .010

APPROVALS		DATE
DRAWN	HR	11/23/18
CHECKED	AC	11/23/18
APPROVED		

ADAM
TECH
INTERCONNECTS909 Rahway Avenue,
Union, NJ 07083
Phone: 908-687-5000
Fax: 908-687-5710TITLE
WATERPROOF CONNECTOR, MALE DIN,
REAR PANEL, SHELL LOCK TYPE, STR PCB

SIZE	PART NO.	REV.
X	SD-PNNXX-MMLRH-P00-000	-
REF: S00200T		SCALE: NTS
		SHEET 1 OF 1