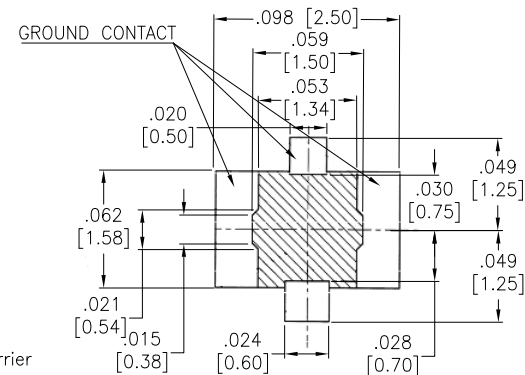
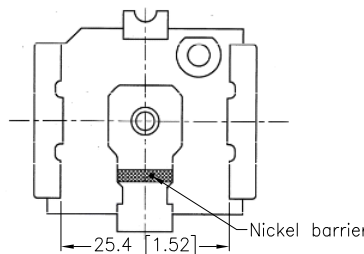
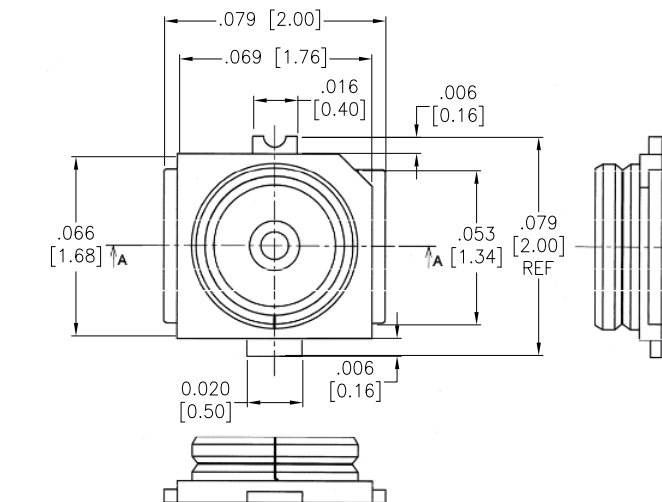


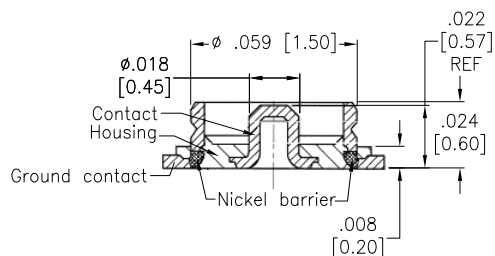
APPROVED: _____

DATE: _____ TITLE: _____

Rev	AWO #	Description	Date	Appr
-		RELEASED	9/5/19	
A		UPDATED DRAWING	1/25/22	JJ/AC1



RECOMMENDED PCB LAYOUT



SECTION A-A

SPECIFICATIONS:

Material:

Insulator: Hi-Temp Thermoplastic, rated UL 94V-0

Insulator color: Black

Contacts: Copper alloy, Gold plated

Electrical:

Frequency range: DC~6 GHz

Impedance: 50 Ohms

Voltage: 60 VAC

VSWR: 1.3 max @ 0.1~3.0 GHz

1.4 max @ 3.0~6.0 GHz

Temperature Rating:

Operating temperature: -40°C to +80°C

Environmental:

Lead free, RoHS compliant



PACKAGED ON TAPE & REEL

UNLESS OTHERWISE SPECIFIED ALL DIMENSIONS ARE INCHES [MM]. TOLERANCES: EXCEPT AS NOTED

INCHES	HOLES
.X ± .10	Ø.X ± .10
.XX ± .020	Ø.XX ± .015
.XXX ± .015	Ø.XXX ± .010

DRAWN	OW	9/5/19
CHECKED	RC	9/5/19
APPROVED		

THIS DRAWING CONTAINS INFORMATION THAT IS PROPRIETARY AND SHOULD NOT BE USED WITHOUT PRIOR WRITTEN PERMISSION FROM ADAM TECH

ADAM TECH

909 Rahway Avenue,
Union, NJ 07083
Phone: 908-687-5000
Fax: 908-687-5710

TITLE
RF CONNECTOR, TYPE MHF, 50 OHMS
VERTICAL, TAPE & REEL

SIZE	PART NO.	REV.
X	RF20-10A-L-00-50-G-TR	A
REF: S00291T	SCALE: NTS	SHEET 1 OF 1