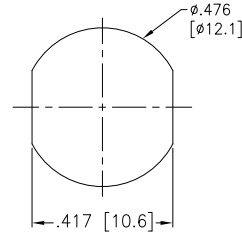
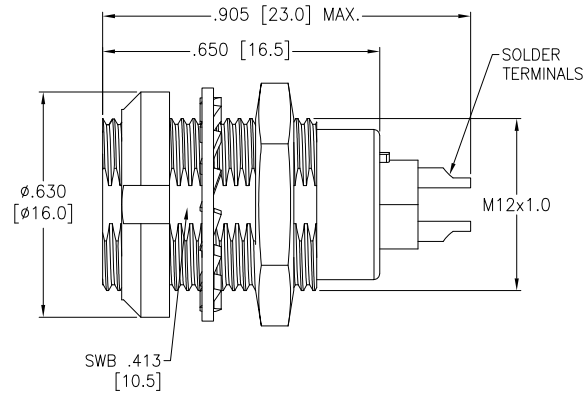
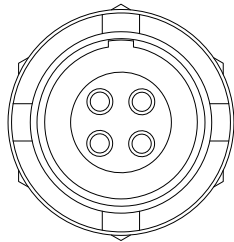


APPROVED: _____

DATE: _____ TITLE: _____

| Rev | AWO # | Description | Date | Appr |
|-----|-------|-------------|---------|------|
| - | | RELEASED | 8/16/21 | |



Panel Cut-Out
(Front or Rear Panel Mounting)
Note: .295 [7.5] Max. Panel Thickness

SPECIFICATIONS:

Material:

Body: Brass, Natural Chrome Plated

Insulator: PPS, color Beige

Terminal: Brass, Gold Plated

Electrical:

Voltage Rating: See chart

Current Rating: See chart

Dielectric withstanding voltage: See chart

Electrical Life: 1,000 Cycles min.

Mechanical:

Endurance: 5,000 Cycles Min.

Temperature Rating:

Operating temperature: -55°C to +150°C

Environmental:

IP50 Protection (Mated Condition)

Lead free, RoHS compliant



MMI-M1RSXXXS

SIZE 1

ALIGNMENT KEY

G = 0°

A = 30°

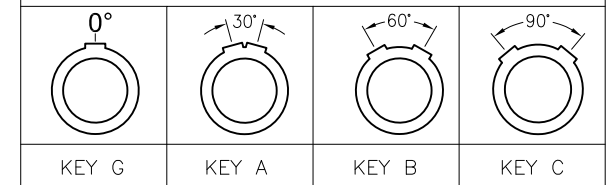
B = 60°

C = 90°

OF POSITIONS

(02, 03, 04, 05, 06, 07, 08, 10, 14 & 16)

ALIGNMENT KEY OPTION



| | 2 Pin | 3 Pin | 4 Pin | 5 Pin | 6 Pin | 7 Pin | 8 Pin | 10 Pin | 14 Pin | 16 Pin |
|---------------------|-------|-------|-------|-------|-------|-------|-------|--------|--------|--------|
| Configuration | | | | | | | | | | |
| Diameter of Pin | Ø1.3 | Ø1.3 | Ø0.9 | Ø0.9 | Ø0.7 | Ø0.7 | Ø0.7 | Ø0.5 | Ø0.5 | Ø0.5 |
| Testing Voltage | 1300V | 1300V | 1200V | 1200V | 1000V | 1000V | 1000V | 800V | 800V | 800V |
| Working Voltage | 300V | 300V | 250V | 250V | 200V | 200V | 200V | 200V | 200V | 200V |
| Rated Current / Pin | 9A | 9A | 8A | 7A | 5A | 5A | 5A | 2A | 2A | 2A |

UNLESS OTHERWISE SPECIFIED
ALL DIMENSIONS ARE INCHES [MM]
TOLERANCES: EXCEPT AS NOTED
INCHES HOLES
.X ± .10 Ø.X ± .10
.XX ± .020 Ø.XX ± .015
.XXX ± .015 Ø.XXX ± .010

| APPROVALS | | DATE |
|-----------|----|---------|
| DRAWN | SS | 8/16/21 |
| CHECKED | SS | 8/16/21 |
| APPROVED | | |

ADAM
TECH

909 Rahway Avenue,
Union, NJ 07083
Phone: 908-687-5000
Fax: 908-687-5710

| TITLE | | | |
|--|--------------|------------|--------------|
| PUSH-PULL SOCKET, VERTICAL, SIZE 1, METAL BODY, REAR PANEL MOUNT, SOLDER TERMINAL, IP50 | | | |
| SIZE | PART NO. | | REV. |
| X | MMI-M1RSXXXS | | - |
| REF: | SXXXXX | SCALE: NTS | SHEET 1 OF 1 |