

APPROVED: _____

DATE: _____ TITLE: _____

Rev	AWO #	Description	Date	Appr
-		RELEASED	9/3/25	
A		UPDATE SPEC.	9/26/25	LW1/RC

SPECIFICATIONS:

Material:

Housing: PA, Color: See Chart

Inner Housing: Hi-Temp Thermoplastic, Color: Black

Contact: Brass

Outer Contacts (Interface): Stainless Steel, Matte Tin plated

Outer Contacts (PCB): Zamak, Matte Tin plated

Medal Plate: Stainless Steel

Contact Plating:

Contact area: 80-160u" Silver Plated

Solder tails area: 80-160u" Matte Tin Plated

Underplate: 40-160u" Nickel underplate overall

Electrical:

Impedance: 50 ohms

Frequency: DC to 9.0 GHz

Return Loss:

17 dB Min ($0.08 \text{ GHz} < f \leq 6 \text{ GHz}$)

12 dB Min ($6 \text{ GHz} < f \leq 9 \text{ GHz}$)

Insulation resistance: 1000 Mohms Min

Dielectric withstanding voltage: 800 Vrms AC Min for 1 minute

Voltage rating: 335 Vrms AC

Current rating: 1A Max

Center Contact Resistance: 15 mohms Max

Outer Contact Resistance: 7.5 mohms Max

Mechanical:

Durability: 25 Cycles Min

Engagement force: 75N Max

Retention Force Latch: 110N Min

Mismating Orientation Effectiveness: 130N Min

Environmental:

Thermal Shock & Humidity: USCAR-2


Vibration & Mechanical Shock: DIN IEC 60068

Soldering: IEC 60068-2

Temperature Rating:

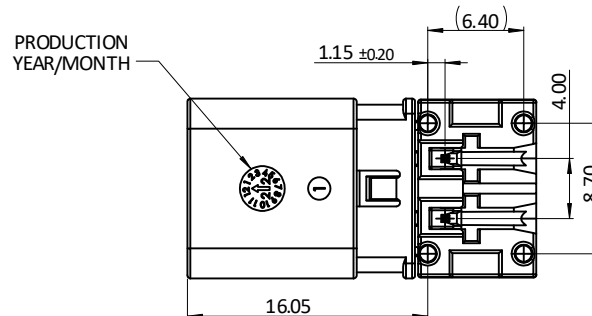
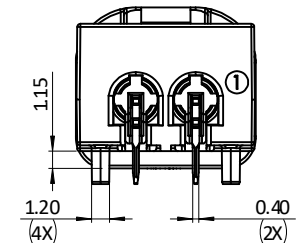
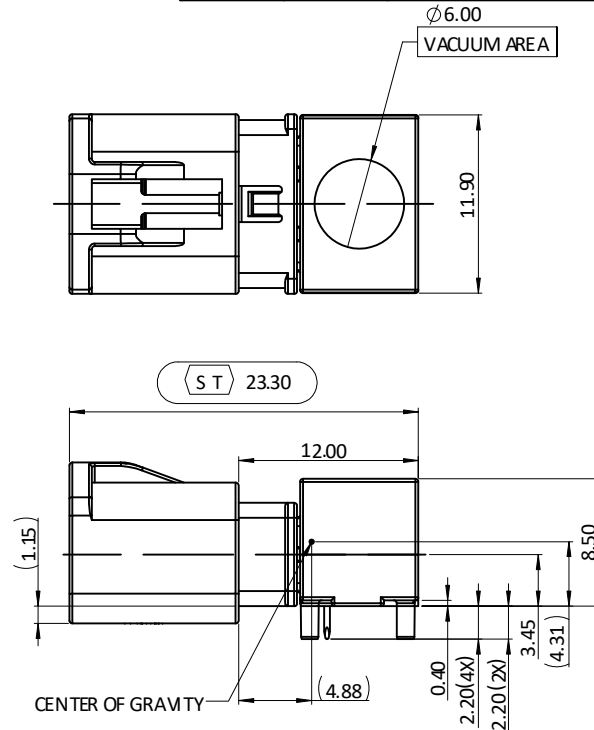
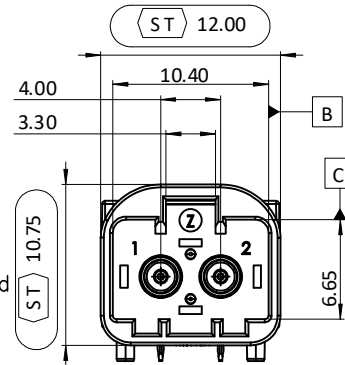
Operating temperature: -40°C to +105°C

Packing:

Standard: 320PCS in Tape & Reel 

Environmental:

Lead free, RoHS compliant



PACKAGED ON TAPE & REEL

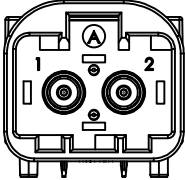
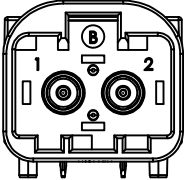
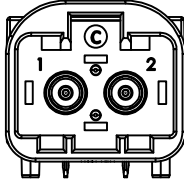
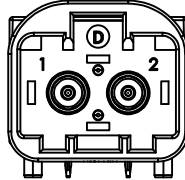
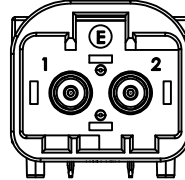
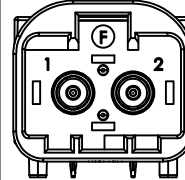
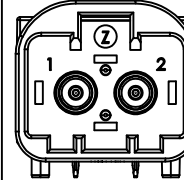
UNLESS OTHERWISE SPECIFIED ALL DIMENSIONS ARE MILLIMETERS. TOLERANCES: EXCEPT AS NOTED			<div>ADAM TECH</div> <div>909 Rahway Avenue, Union, NJ 07083 Phone: 908-687-5000 adam-tech.com</div>	
MM	X. ± 0.50 .X ± 0.30 .XX ± 0.20	ANGLE		
DRAWN	LW1	9/3/25	TITLE MINI FAKRA RIGHT ANGLE 1X2 PLUG	
CHECKED	RC	9/3/25		
APPROVED				
CONFIDENTIAL AND PROPRIETARY © Adam Tech. All rights reserved. This document contains confidential and proprietary information belonging to Adam Tech. It is provided solely for design and reference purposes by authorized parties. Any reproduction, distribution, display, or disclosure to third parties, in whole or in part, without the prior written consent of Adam Tech, is strictly prohibited. Adam Tech retains all rights, including copyright, trademark, trade secret, and all other intellectual property rights worldwide.			SIZE X	
			PART NO. MHSD-02AX-BM-PRX-T/R	REV. A
REF: S00013T			SCALE: NTS	SHEET 1 OF 3

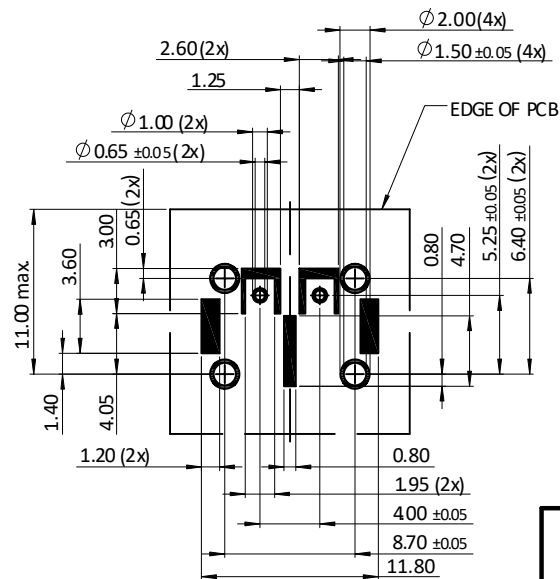
APPROVED: _____

DATE: _____ TITLE: _____

Rev	AWO #	Description	Date	Appr
SEE SHT 1 OF 3 FOR REVISION				

MHSD-02AX-BM-PRX-T/R

Coding	A	B	C	D	E	F	Z
Plug							
Color	JET BLACK	PURE WHITE	LIGHT BLUE	CLARET VIOLET	MAY GREEN	NUT BROWN	WATER BLUE



RECOMMENDED PCB LAYOUT

UNLESS OTHERWISE SPECIFIED ALL DIMENSIONS
ARE MILLIMETERS. TOLERANCES: EXCEPT AS NOTED

MM	X. ± 0.50	ANGLE	± 5°
	.X ± 0.30		
	.XX ± 0.20		

DRAWN LW1 9/3/25

CHECKED RC 9/3/25

APPROVED

CONFIDENTIAL AND PROPRIETARY
© Adam Tech. All rights reserved. This document contains confidential and proprietary information belonging to Adam Tech. It is provided solely for design and reference purposes by authorized parties. Any reproduction, distribution, display, or disclosure to third parties, in whole or in part, without the prior written consent of Adam Tech, is strictly prohibited. Adam Tech retains all rights, including copyright, trademark, trade secret, and all other intellectual property rights worldwide.

ADAM
TECH

909 Rahway Avenue,
Union, NJ 07083
Phone: 908-687-5000
adam-tech.com

TITLE
MINI FAKRA RIGHT ANGLE 1X2 PLUG

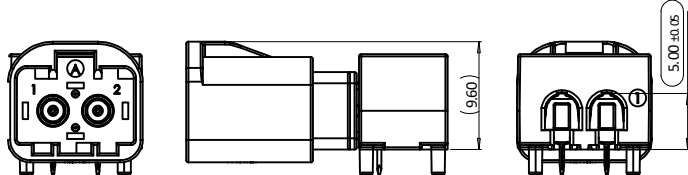
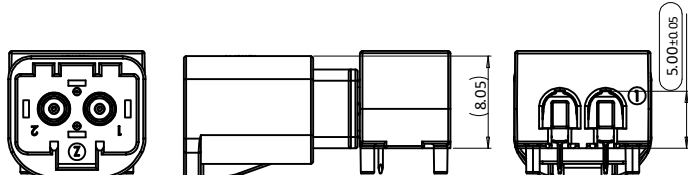
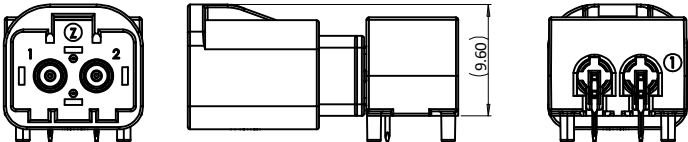
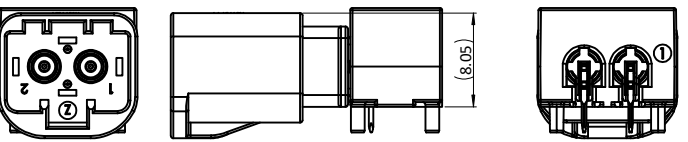
SIZE X	PART NO. MHSD-02AX-BM-PRX-T/R	REV. A
REF: S00013T	SCALE: NTS	SHEET 2 OF 3

APPROVED: _____

DATE: _____ TITLE: _____

Rev	AWO #	Description	Date	Appr
SEE SHT 1 OF 3 FOR REVISION				

MHSD-02AX-BM-PRX-T/R

ADAM P/N	MHSD-02AX-BM-PRA-T/R	ADAM P/N	MHSD-02AX-BM-PRB-T/R
DIRECTION		DIRECTION	
ADAM P/N	MHSD-02AX-BM-PRC-T/R	ADAM P/N	MHSD-02AX-BM-PRD-T/R
DIRECTION		DIRECTION	

UNLESS OTHERWISE SPECIFIED ALL DIMENSIONS
ARE MILLIMETERS. TOLERANCES: EXCEPT AS NOTED

MM	X. ± 0.50	ANGLE	± 5°
	.X ± 0.30		
	.XX ± 0.20		

DRAWN LW1 9/3/25

CHECKED RC 9/3/25

APPROVED

CONFIDENTIAL AND PROPRIETARY
© Adam Tech. All rights reserved. This document contains confidential and proprietary information belonging to Adam Tech. It is provided solely for design and reference purposes by authorized parties. Any reproduction, distribution, display, or disclosure to third parties, in whole or in part, without the prior written consent of Adam Tech, is strictly prohibited. Adam Tech retains all rights, including copyright, trademark, trade secret, and all other intellectual property rights worldwide.

ADAM
TECH

909 Rahway Avenue,
Union, NJ 07083
Phone: 908-687-5000
adam-tech.com

TITLE
MINI FAKRA RIGHT ANGLE 1X2 PLUG

SIZE X	PART NO. MHSD-02AX-BM-PRX-T/R	REV. A
REF: S00013T	SCALE: NTS	SHEET 3 OF 3