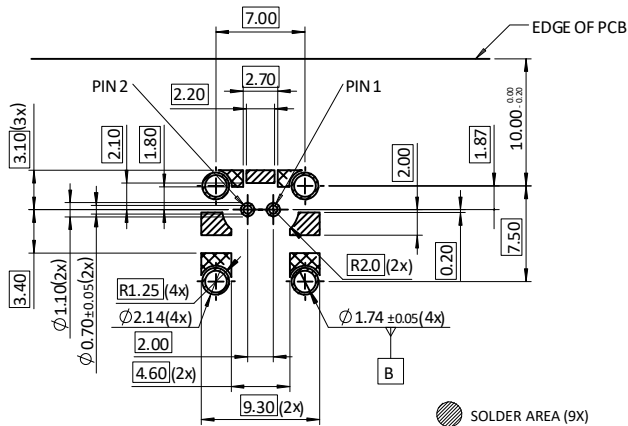


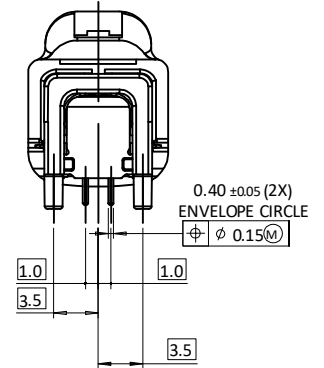
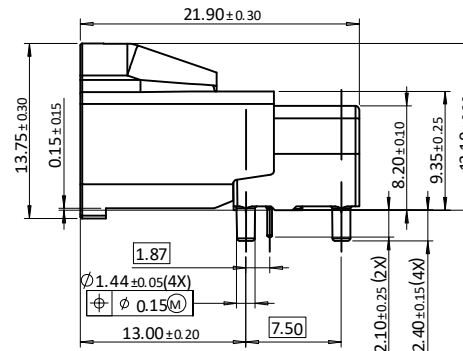
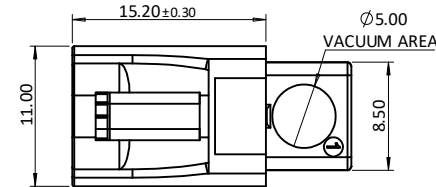
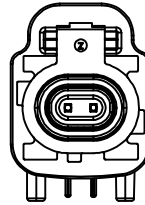
APPROVED: \_\_\_\_\_

DATE: \_\_\_\_\_ TITLE: \_\_\_\_\_

Rev	AWO #	Description	Date	Appr
-		RELEASED	7/16/24	
A		UPDATE SPEC.	9/3/25	WY/RC



- SOLDER AREA (9X)
- KEEP OUT AREA, FREE OF SOLDER, NO ROUTING UNDERNEATH (4X)



#### SPECIFICATIONS:

##### Material:

Coding Housing: PA, Color: See Chart

Inner Housing: Thermoplastic, Color: Black

Contacts: Copper Alloy

Outer Contact: Zinc Alloy, 120–240u" Matte Tin Plated

Ground Pin: Copper Alloy, 80–160u" Matte Tin Plated

##### Contact Plating:

Contact area: 6u" Gold Plated

Solder tails area: 80–160u" Matte Tin Plated

Underplate: 80–160u" Nickel underplate overall

##### Electrical:

Voltage rating: 60V DC Max

Current rating: 1.5A max

Contact resistance: 10 mohms max

Insulation resistance: 100 Mohms min

Dielectric withstanding voltage: 250V rms

Impedance, differentail mode: 100Ω

Frequency Range: DC to 10 GHz

Return loss: ≥30 dB, 0.01 GHz to 3 GHz

≥25 dB, 3 GHz to 6 GHz

≥20 dB, 6 GHz to 10 GHz

≥15 dB, 10 GHz to 15 GHz

≥12 dB, 15 GHz to 20 GHz

##### Mechanical:

Durability: 25 Cycles

Engagement force: 30 max

Retention force: 110N min

##### Environmental:

Thermal shock & Mechanical shock & Humidity & Vibration:

USCAR–2 & USCAR–17

DIN EN 60512 & DIN IEC 60068

Soldering: IEC 60068–2

##### Temperature Rating:

Operating temperature: –40°C to +105°C

##### Packing:

Standard: 160 pcs in tape & reel

##### Environmental:

Lead free, RoHS compliant



HTX–01XSBLC1R

Coding	A	B	C	D	E	F	G
Plug							
Color	Jet Black	Pure White	Light Blue	Claret Violet	May Green	Nut Brown	Platinum Grey
Coding	H	J	K	L	M	O	Z
Plug							
Color	Light Pink	Beige	Curry	Yellow Green	Pastel Orange	Light Green	Water Blue

PACKAGED ON TAPE & REEL

UNLESS OTHERWISE SPECIFIED ALL DIMENSIONS ARE MILLIMETERS. TOLERANCES: EXCEPT AS NOTED				<div>ADAM TECH</div> <div>909 Rahway Avenue, Union, NJ 07083 Phone: 908-687-5000 adam-tech.com</div>	
MM	X. ± 0.50 .X ± 0.30 .XX ± 0.20	ANGLE	± 5°		
DRAWN		LH	7/16/24		TITLE HIGH-SPEED MODULAR TWISTED-PAIR DATA RIGHT ANGLE PLUG 1X1
CHECKED		SC	7/16/24		
APPROVED					
CONFIDENTIAL AND PROPRIETARY © Adam Tech. All rights reserved. This document contains confidential and proprietary information belonging to Adam Tech. It is provided solely for design and reference purposes by authorized parties. Any reproduction, distribution, display, or disclosure to third parties, in whole or in part, without the prior written consent of Adam Tech, is strictly prohibited. Adam Tech retains all rights, including copyright, trademark, trade secret, and all other intellectual property rights worldwide.					
SIZE X		PART NO. HTX-01XSBLC1R		REV. A	
REF: S00013T		SCALE: NTS		SHEET 1 OF 1	