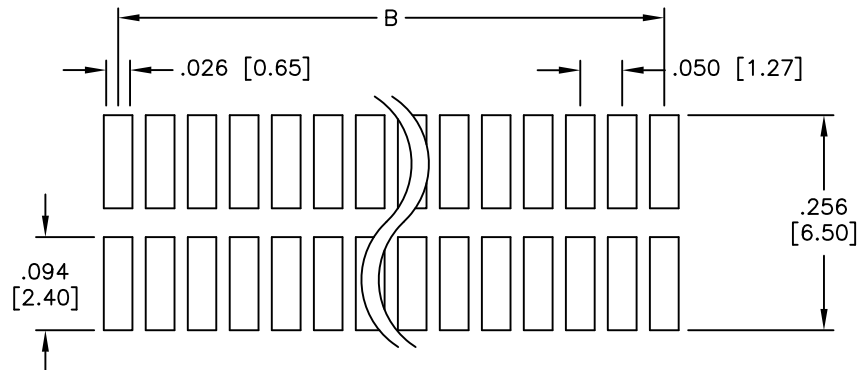
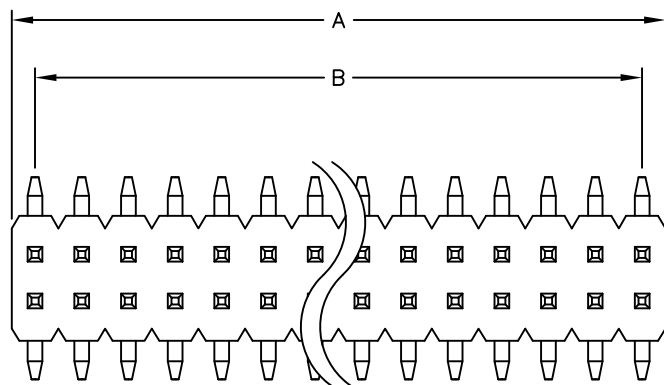


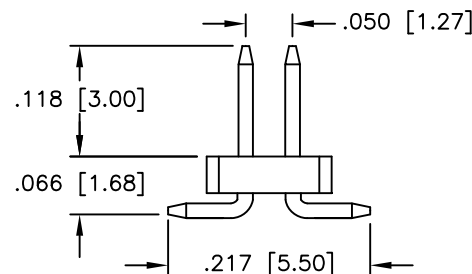
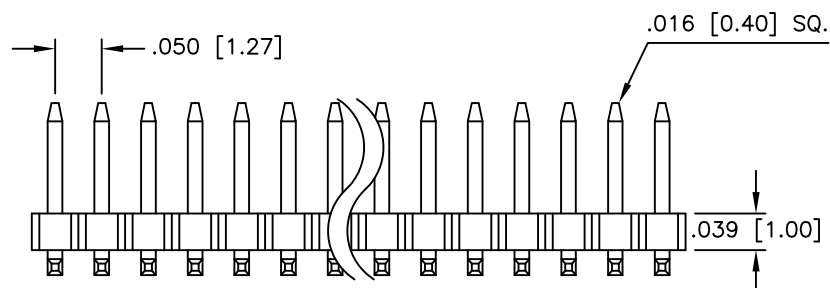
APPROVED: _____

DATE: _____ TITLE: _____

Rev	AWO #	Description	Date	Appr
-		RELEASED	2/23/10	



Recommended PCB Layout



SPECIFICATIONS:

Material:

Insulator: Hi-temp thermoplastic, glass reinforced, rated UL 94V-0

Insulator color: Black

Contacts: Brass

Plating:

Gold flash over Nickel underplate overall.

Electrical:

Operating voltage: 250 VAC max

Current rating: 3 Amps max

Contact resistance: 20 mohms max

Insulation resistance: 5,000 Mohms min @ 500 VDC

Dielectric withstanding voltage: 1,000 VAC for 1 minute

Temperature Rating:

Operating temperature: -55°C to +105°C

Environmental:

Lead free, RoHS compliant



Positions: 8 thru 100

A = .050 [1.27] x No. of Positions per Row

B = .050 [1.27] x No. of Spaces

UNLESS OTHERWISE SPECIFIED
ALL DIMENSIONS ARE INCHES [MM]
TOLERANCES: EXCEPT AS NOTED
INCHES HOLES
.X ± .10 Ø.X ± .10
.XX ± .020 Ø.XX ± .015
.XXX ± .015 Ø.XXX ± .010

APPROVALS

DATE

DRAWN

DY

2/23/10

CHECKED

APPROVED

ADAM TECH

909 Rahway Avenue, Union, NJ 07083

Phone: 908-687-5000 Fax: 908-687-5710

TITLE
.050 [1.27] DUAL ROW PIN HEADER, SMT,
GOLD PLATED

SIZE

X

PART NO.

HPH2-A-XX-UA-SMT

REV.

-

REF:

SCALE: NTS

SHEET 1 OF 1