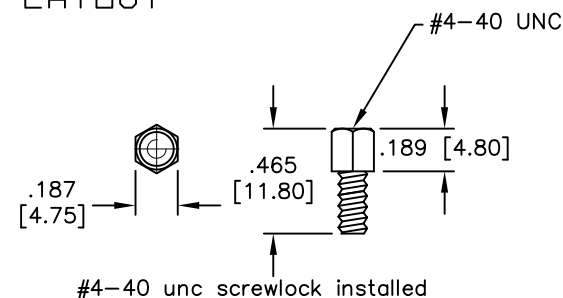
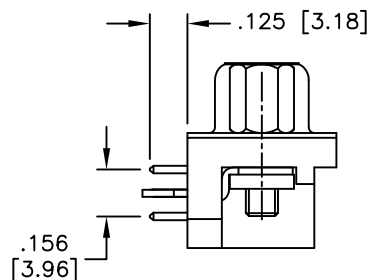
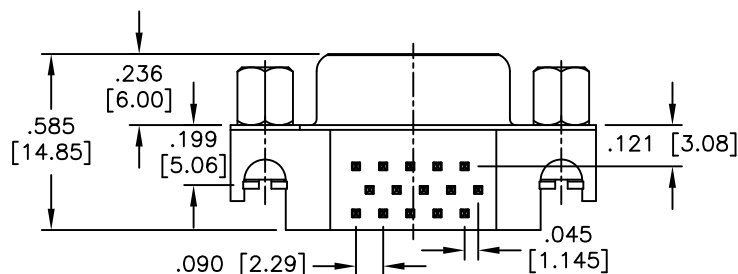
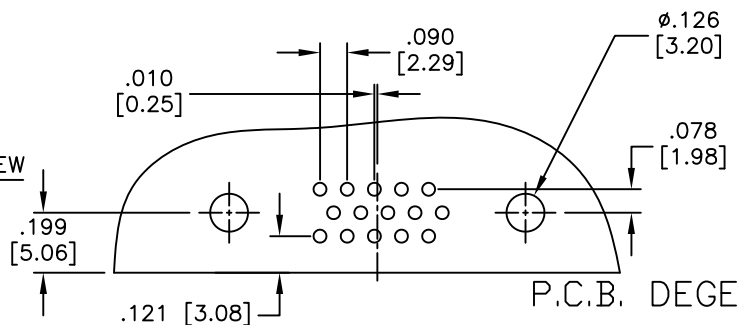
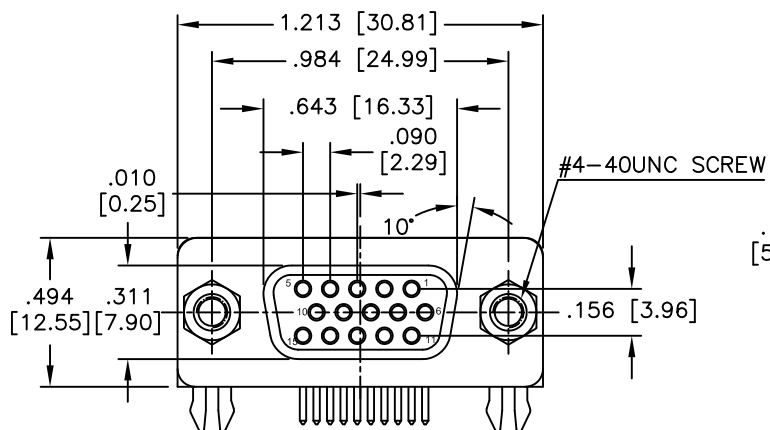


APPROVED: \_\_\_\_\_  
 DATE: \_\_\_\_\_ TITLE: \_\_\_\_\_

Rev	AWO #	Description	Date	Appr
-		RELEASED	8/30/05	
A		REDRAWN	7/14/11	
B		REVISED SHAPE	9/7/11	



#### SPECIFICATIONS:

Material:  
 Insulator: PBT, glass reinforced, rated UL 94V-0  
 Insulator color: Black

Contacts: Brass

Shell: Steel, Tin plated

Clinch Nut: Brass, Nickel plated

Boardlock: Brass, Nickel plated

Screwlock: Brass, Nickel plated

Plating:

Gold flash over Nickel underplate on contact area,

Tin over Copper underplate and tails

Electrical:

Voltage rating: 250 VAC rms

Current rating: 3 Amps max

Contact resistance: 20 mohms max

Insulation resistance: 1,000 Mohms min

Dielectric withstanding voltage: 1,000 VAC for 1 minute

Environmental:

Lead free, RoHS compliant



UNLESS OTHERWISE SPECIFIED  
 ALL DIMENSIONS ARE INCHES [MM]  
 TOLERANCES: EXCEPT AS NOTED

INCHES		HOLES	
.X	± .10	Ø.X	± .10
.XX	± .020	Ø.XX	± .015
.XXX	± .015	Ø.XXX	± .010

APPROVALS		DATE
DRAWN	SS	8/30/05
CHECKED		
APPROVED		

## ADAM TECH

909 Rahway Avenue, Union, NJ 07083  
 Phone: 908-687-5000 Fax: 908-687-5710

TITLE: .197 [5.00] SLIMLINE D-SUB SOCKET  
 FORKED BOARDLOCKS, #4-40 JACKSCREWS

SIZE X	PART NO. HD15-SN-25	REV. B
REF: S00087T	SCALE: NTS	SHEET 1 OF 1