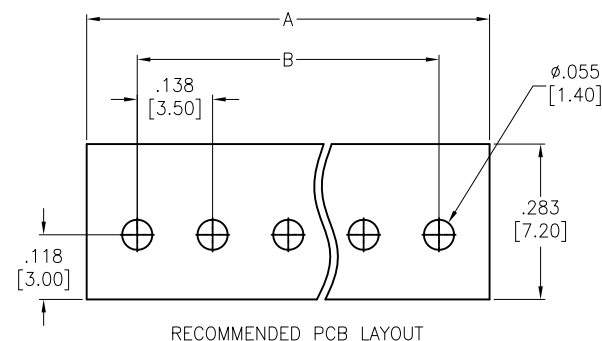
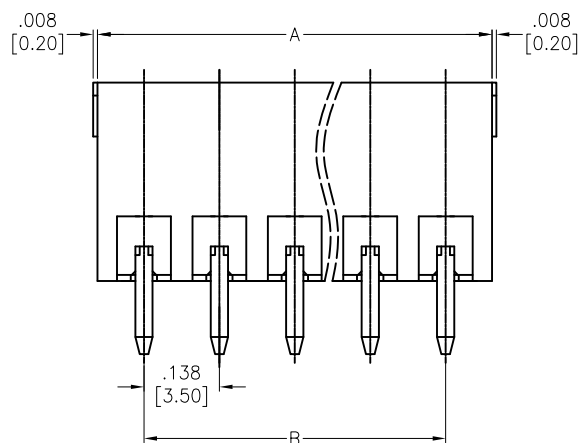
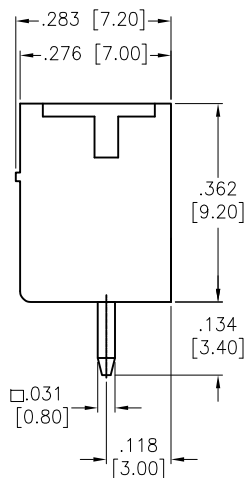
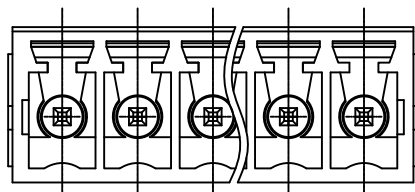


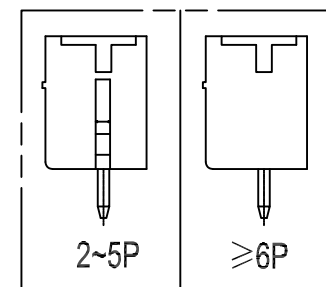
APPROVED: _____

DATE: _____ TITLE: _____

Rev	AWO #	Description	Date	Appr
-		RELEASED	6/13/14	
A		UPDATE SHAPE	10/27/14	AY/NP
B		ADDED SHAPE	12/22/16	AY/IC
C		UPDATE DRAWING	9/11/20	OW/CC



RECOMMENDED PCB LAYOUT



SPECIFICATIONS:

Material:

Insulator: PA66, rated UL 94V-0

Insulator color: Green

Contact: Copper Alloy, Tin plated

Electrical:

Voltage rating: 300 V

Current rating: 8 A

Dielectric withstanding voltage: 1600V for 1 minute

Temperature Rating:

Operating temperature: -40°C to +105°C

Environmental:

Lead free, RoHS compliant.



Positions: 02 thru 24

A= .138 [3.50] x No. of Spaces + .169 [4.30]

B= .138 [3.50] x No. of Spaces

UNLESS OTHERWISE SPECIFIED
ALL DIMENSIONS ARE INCHES [MM]
TOLERANCES: EXCEPT AS NOTED
INCHES HOLES
.X ± .10 Ø.X ± .10
.XX ± .020 Ø.XX ± .015
.XXX ± .015 Ø.XXX ± .010

APPROVALS		DATE	
DRAWN	AY	6/13/14	
CHECKED			
APPROVED			

SIZE X		PART NO. EBRA-XX-A		REV. C
REF: S00067C		SCALE: NTS		SHEET 1 OF 1

ADAM
TECH
INTERCONNECTS

909 Rahway Avenue,
Union, NJ 07083
Phone: 908-687-5000
Fax: 908-687-5710

TITLE
TERMINAL BLOCK, STRAIGHT, .138" [3.50] PITCH