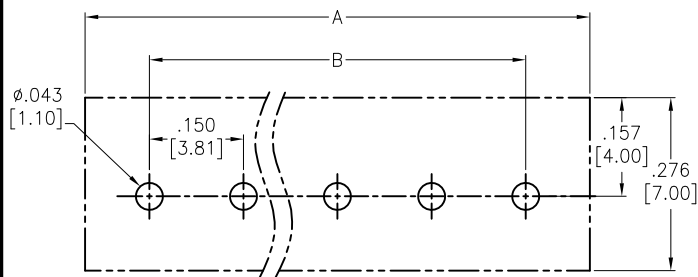
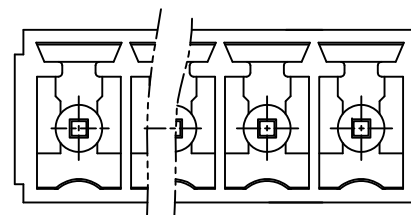
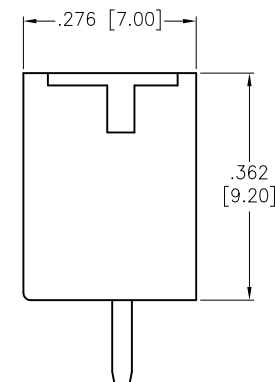
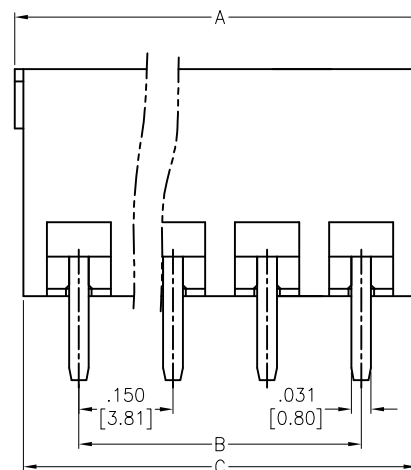
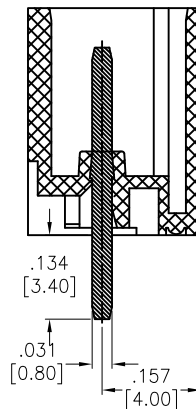


APPROVED: _____
 DATE: _____ TITLE: _____

Rev	AWO #	Description	Date	Appr
-		RELEASED	6/13/07	
A		REDRAWN	6/22/12	
B		UPDATE DRAWING	2/16/23	LH/YC



RECOMMENDED PCB LAYOUT



SPECIFICATIONS:

Material:
 Insulator: Nylon66, rated UL 94V-0
 Insulator color: Green
 Contact: Brass, Tin plated.
 Electrical:
 Voltage rating: 300 VAC
 Current rating: 8 Amp
 Insulation resistance: 5000 MΩ min @ 500 VDC
 Dielectric withstanding voltage: 2000 VAC
 Environmental:
 Operating temperature: -40°C to +105°C
 Lead free, RoHS compliant.



Poles: 2 thru 24

A = .150 [3.81] X No. of Spaces + .205 [5.20]

B = .150 [3.81] X No. of Spaces

C = .150 [3.81] X No. of Spaces + .177 [4.50]

UNLESS OTHERWISE SPECIFIED ALL DIMENSIONS ARE INCHES [MM]. TOLERANCES: EXCEPT AS NOTED

INCHES	HOLES
.X ± .10	Ø.X ± .10
.XX ± .020	Ø.XX ± .015
.XXX ± .015	Ø.XXX ± .010

DRAWN	SS	6/13/07
CHECKED		
APPROVED		

THIS DRAWING CONTAINS INFORMATION THAT IS PROPRIETARY AND SHOULD NOT BE USED WITHOUT PRIOR WRITTEN PERMISSION FROM ADAM TECH

ADAM
TECH

909 Rahway Avenue,
 Union, NJ 07083
 Phone: 908-687-5000
 Fax: 908-687-5710

TITLE EURO BLOCK, 3.81mm PLUGGABLE
 2 THRU 24 POLES

SIZE X	PART NO. EBR-XX-B	REV. B
REF: S00026C	SCALE: NTS	SHEET 1 OF 1