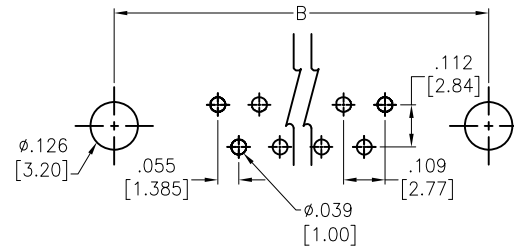
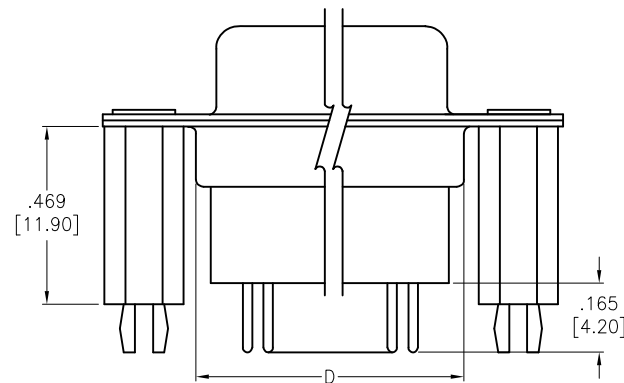
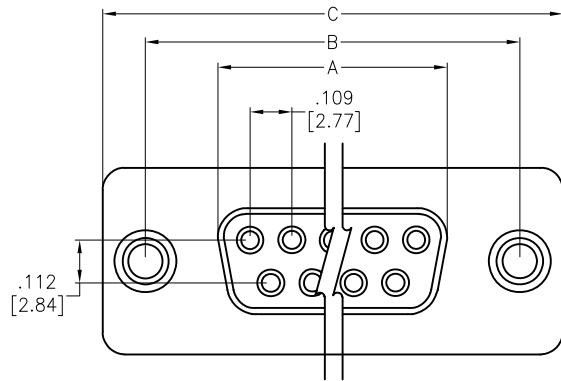
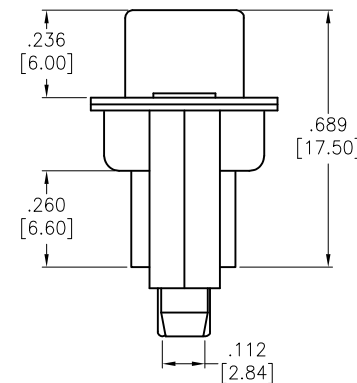


APPROVED: _____
DATE: _____ TITLE: _____

Rev	AWO #	Description	Date	Appr
-		RELEASED	4/15/05	
A		REDRAWN	01/16/13	



RECOMMENDED PCB LAYOUT



SPECIFICATIONS:

Material:

Insulator: Thermoplastic, rated UL 94V-0

Insulator color: Black

Contacts: Copper Alloy

Shell: Steel

Hardware: Copper alloy

Plating:

Gold flash over Nickel underplate overall

Electrical:

Operating voltage: 250 VAC max

Current rating: 3 Amps max

Contact resistance: 15 mohms max

Insulation resistance: 3,000 Mohms min

Dielectric withstanding voltage: 1,000 VAC for 1 minute

Temperature Rating:

Operating temperature: -55°C to +105°C

Environmental:

Lead free, RoHS compliant



DXXX	NO. OF CONTACTS	DIMENSIONS							
		A		B		C		D	
DE09	9	.642	[16.30]	.984	[25.00]	1.213	[30.80]	.756	[19.20]
DA15	15	.969	[24.60]	1.311	[33.30]	1.543	[39.20]	1.091	[27.70]
DB25	25	1.508	[38.30]	1.854	[47.10]	2.091	[53.10]	1.618	[41.10]
DC37	37	2.157	[54.80]	2.500	[63.50]	2.732	[69.40]	2.256	[57.30]

UNLESS OTHERWISE SPECIFIED
ALL DIMENSIONS ARE INCHES [MM]
TOLERANCES: EXCEPT AS NOTED
INCHES HOLES
.X ± .10 Ø.X ± .10
.XX ± .020 Ø.XX ± .015
.XXX ± .015 Ø.XXX ± .010

APPROVALS		DATE
DRAWN	SS	4/15/05
CHECKED		
APPROVED		

ADAM TECH

909 Rahway Avenue, Union, NJ 07083

Phone: 908-687-5000 Fax: 908-687-5710

TITLE
D-SUB SOCKET, HIGH PROFILE
RIVETED #4-40 STANDOFFS W/BOARDLOCKS

SIZE X	PART NO. DXXX-SE-1-BL	REV. A
REF: S00013T	SCALE: NTS	SHEET 1 OF 1