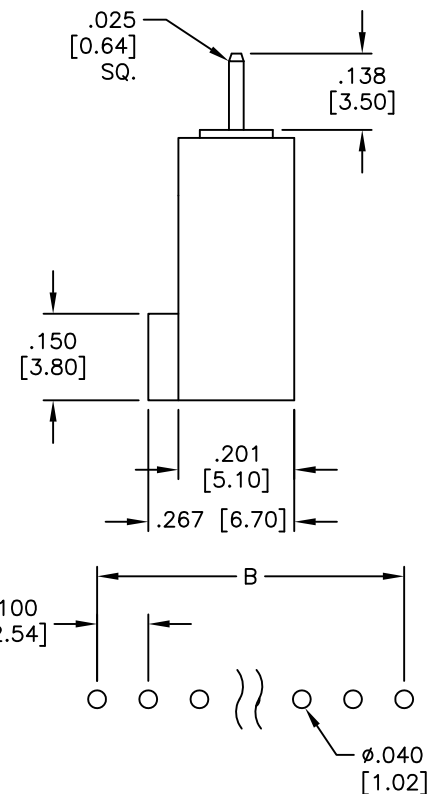
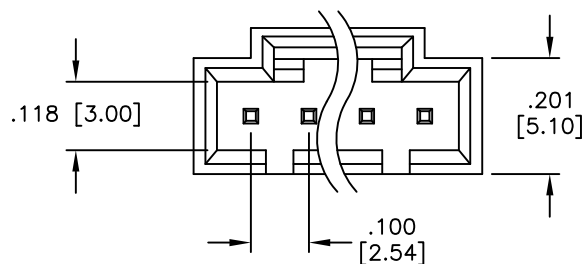
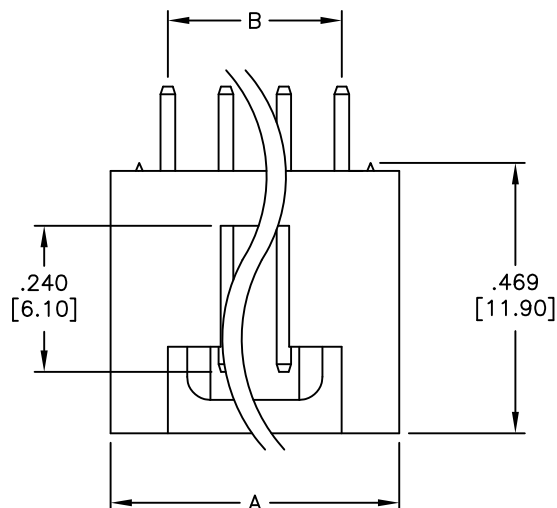


APPROVED: _____

DATE: _____ TITLE: _____

Rev	AWO #	Description	Date	Appr
-		RELEASED	4/7/05	
A		REVISED SPEC.	3/15/12	
B		UPDATE DRAWING	1/29/18	AY/KC



PCB LAYOUT

SPECIFICATIONS:

Material:

Insulator: PBT, glass reinforced, rated UL 94V-0

Insulator color: Black

Contacts: Copper alloy

Plating:

Tin over Copper underplate overall

Electrical:

Voltage rating: 250 VAC/DC

Current rating: 2.5 A

Insulation resistance: 1,000 Mohms min

Dielectric withstanding voltage: 600 VAC for 1 minute

Temperature Rating:

-25°C to +85°C

Environmental:

Lead free, RoHS compliant



Positions: 2 thru 18

A = .100 [2.54] x No. of Positions + .100 [2.54]

B = .100 [2.54] x No. of Spaces

UNLESS OTHERWISE SPECIFIED
ALL DIMENSIONS ARE INCHES [MM]
TOLERANCES: EXCEPT AS NOTED
INCHES HOLES
.X ± .10 Ø.X ± .10
.XX ± .020 Ø.XX ± .015
.XXX ± .015 Ø.XXX ± .010

APPROVALS		DATE
DRAWN	SS	4/7/05
CHECKED		
APPROVED		

ADAM TECH
INTERCONNECTS
909 Rahway Avenue,
Union, NJ 07083
Phone: 908-687-5000
Fax: 908-687-5710

TITLE
.100 [2.54] LATCHING HEADER
STRAIGHT, PCB

SIZE X	PART NO. CDR-XX-TS	REV. B
REF: S00016T	SCALE: NTS	SHEET 1 OF 1