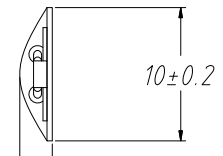
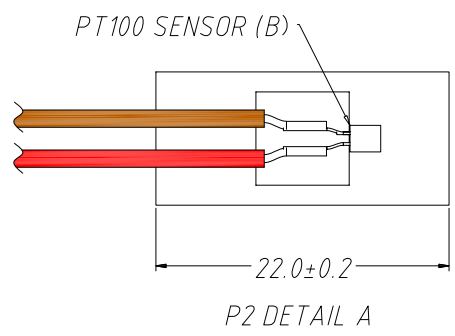
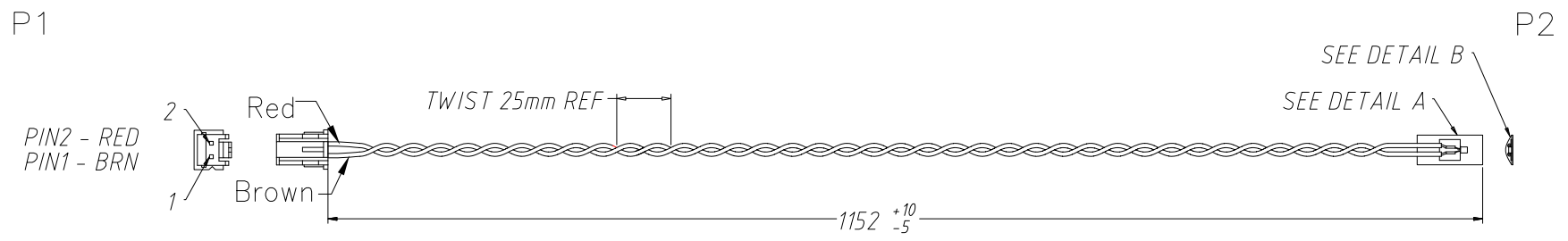


Rev	AWO #	Description	Date	Appr
-		RELEASED	12/9/22	
A		UPDATED DRAWING	4/28/23	JJ/LL1



THE ENTIRE SURFACE OF THE ALUMINUM SHEET IS COVERED WITH EPOXY GLUE, WITH A TOTAL THICKNESS OF 2.5MAX.
T=0.4mm ALUMINUM SHEET

DETAIL B

SPECIFICATIONS:

Connector:

P1= 2 Pos housing, 2.50mm, JST XAP-02V-1.
Crimp terminals, JST SXA-01T-P0.6
P2 = Temperature Sensor Chip, RTD PT100, M222A.

Wires:

UL 1332, 24 Awg, 7/0.2TA, O.D.: 1.3mm, FEP, color Red & Brown

Electrical Test:

All Assemblies must be 100% Tested for Shorts, Open, Continuity, and Physical Appearance.

Environmental:

Lead free, RoHS compliant



UNLESS OTHERWISE SPECIFIED ALL DIMENSIONS ARE MM. TOLERANCES: EXCEPT AS NOTED		
	MM	
.X	± 2.54	
.XX	± 0.508	
.XXX	± 0.381	
DRAWN	SS	12/9/22
CHECKED	SS	12/9/22
APPROVED		
THIS DRAWING CONTAINS INFORMATION THAT IS PROPRIETARY AND SHOULD NOT BE USED WITHOUT PRIOR WRITTEN PERMISSION FROM ADAM TECH		

	909 Rahway Avenue, Union, NJ 07083 Phone: 908-687-5000 Fax: 908-687-5710	
	TITLE SENSOR CABLE ASSY, 2.5mm 2 POS CONN, TO RTD PT100, TEMPERATURE SENSOR	
SIZE X	PART NO. CA-TS-002	REV. A
REF:	SCALE: NTS	SHEET 1 OF 1

6

5

4

3

2

1

D

D

C

C

B

B

A

A

6

5

4

3

2

1