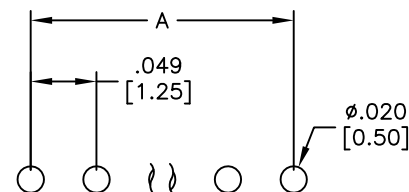
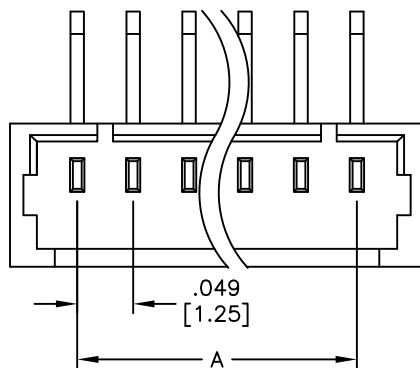


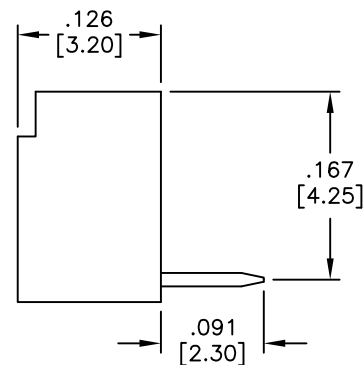
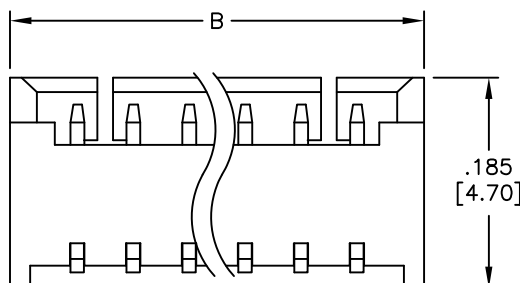
APPROVED: _____

DATE: _____ TITLE: _____

Rev	AWO #	Description	Date	Appr
-	9870	RELEASED	11/19/09	
A		UPDATE DRAWING	12/4/18	AY/IL



RECOMMENDED PCB LAYOUT



SPECIFICATIONS:

Material:

Insulator: Hi-temp thermoplastic, rated UL 94V-0

Insulator color: Beige

Contacts: Copper Alloy

Plating:

Tin over Nickel underplate overall

Electrical:

Voltage rating: 125V AC, DC

Current rating: 1A AC, DC

Contact resistance: 20 mohms max

Insulation resistance: 100 Mohms min

Dielectric withstanding voltage: 500 VAC for 1 minute

Temperature Rating:

-25°C to +85°C

Environmental:

Lead free, RoHS compliant.



Positions: 02 thru 15

A = .049 [1.25] X No. of Spaces

B = .049 [1.25] X No. of Spaces + .118 [3.00]

UNLESS OTHERWISE SPECIFIED ALL DIMENSIONS ARE INCHES [MM] TOLERANCES: EXCEPT AS NOTED INCHES HOLES .X ± .10 Ø.X ±.10 .XX ± .020 Ø.XX ±.015 .XXX ± .015 Ø.XXX ±.010			ADAM TECH INTERCONNECTS		909 Rahway Avenue, Union, NJ 07083 Phone: 908-687-5000 Fax: 908-687-5710	
APPROVALS			DATE		TITLE .049 [1.25] PITCH WIRE TO BOARD HEADER RIGHT ANGLE TYPE	
DRAWN		DY	11/19/09			
CHECKED						
APPROVED						
			SIZE X	PART NO. 125SH-B-XX-TR		REV. A
			REF: S00123T		SCALE: NTS	SHEET 1 OF 1