

A2Y/A6Y

Form 600 Fuses

SPECIAL PURPOSE



Mersen Form 600 fuses are the original current-limiting fuses, pre-dating all the standards. Their 500V DC rating (through 600A) is a useful feature for special fusing applications. Form 600 fuses provide a high degree of current limitation in AC and DC applications. Types 1 and 3 are dimensionally interchangeable with Class H and K fuses. Types 4 and 5 have unique rejection dimensions and are not interchangeable.

CATALOG NUMBERS (AMPS)

| 250V | | | | 600V | | | |
|---------|----------|----------|----------|---------|----------|----------|-----------|
| A2Y1-1 | A2Y70-4 | A2Y200-3 | A2Y450-3 | A6Y1-1 | A6Y70-4 | A6Y200-3 | A6Y450-3 |
| A2Y2-1 | A2Y70-5 | A2Y200-4 | A2Y450-4 | A6Y2-1 | - | A6Y200-4 | A6Y450-4 |
| A2Y3-1 | A2Y80-3 | - | - | A6Y3-1 | A6Y80-3 | A6Y200-5 | A6Y450-5 |
| A2Y5-1 | A2Y80-4 | - | A2Y500-3 | A6Y5-1 | A6Y80-4 | A6Y225-3 | A6Y500-3 |
| A2Y6-1 | A2Y90-3 | - | A2Y500-4 | A6Y6-1 | A6Y90-3 | A6Y225-4 | A6Y500-4 |
| A2Y8-1 | A2Y90-4 | - | A2Y500-5 | A6Y8-1 | - | A6Y225-5 | A6Y500-5 |
| A2Y10-1 | A2Y100-3 | A2Y250-3 | A2Y600-3 | A6Y10-1 | A6Y100-3 | A6Y250-3 | A6Y600-3 |
| A2Y15-1 | A2Y100-4 | A2Y250-4 | A2Y600-4 | A6Y15-1 | A6Y100-4 | A6Y250-4 | A6Y600-4 |
| A2Y20-1 | A2Y125-3 | - | A2Y600-5 | A6Y20-1 | A6Y125-3 | A6Y250-5 | A6Y600-5 |
| A2Y25-1 | A2Y125-4 | A2Y300-3 | - | A6Y25-1 | A6Y125-4 | A6Y300-3 | A6Y650-4 |
| A2Y30-1 | - | A2Y300-4 | - | A6Y30-1 | A6Y125-5 | A6Y300-4 | A6Y800-4 |
| A2Y35-1 | A2Y150-3 | - | - | A6Y35-1 | A6Y150-3 | A6Y300-5 | A6Y800-5 |
| A2Y40-1 | A2Y150-4 | A2Y350-3 | - | A6Y40-1 | A6Y150-4 | A6Y350-3 | A6Y1000-4 |
| A2Y45-1 | - | A2Y350-4 | - | A6Y45-1 | A6Y150-5 | A6Y350-4 | A6Y1000-5 |
| A2Y50-1 | A2Y175-3 | A2Y400-3 | - | A6Y50-1 | A6Y175-3 | A6Y400-3 | A6Y1200-4 |
| A2Y60-1 | A2Y175-4 | A2Y400-4 | - | A6Y60-1 | A6Y175-4 | A6Y400-4 | A6Y1200-5 |
| A2Y70-3 | - | - | - | A6Y70-3 | A6Y175-5 | A6Y400-5 | |

RATINGS

A2Y

- **Volts:** 250VAC, 500VDC
- **Amps:** 1 to 600A
- **I.R.:** 200kA I.R.AC, 100kA I.R. DC

A6Y

- **Volts:** 600VAC, 500VDC
- **Amps:** 1 to 8A (500VAC), 10 to 1200A (600VAC), 1 to 600A (500VDC)
- **I.R.:** 200kA I.R. AC, 100kA I.R. DC

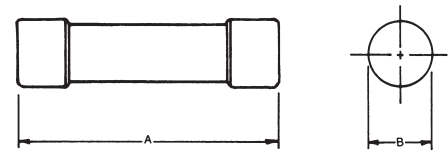
APPROVALS/STANDARDS

- UL Recognized Component File E60314
- DC Tested to UL248-1 (1-600A)



TYPE 1, 1-60 AMPS CLASS K DIMENSIONS

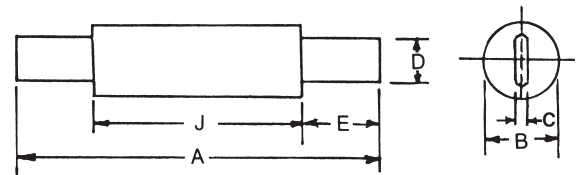
| Ampere Rating | Inches: A2Y - 1-60A | | Inches: A6Y - 1-60A | |
|---------------|---------------------|-------|---------------------|--------|
| | A | B | A | B |
| 1-30 | 2 | 9/16 | 5 | 13/16 |
| 35-60 | 3 | 13/16 | 5-1/2 | 1-1/16 |



Type 1 1-60A

TYPE 3, 70-600 AMPS, CLASS K DIMENSIONS

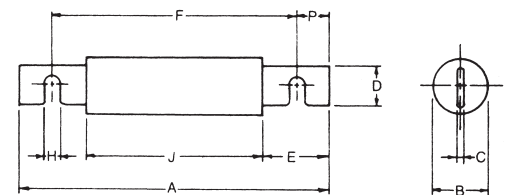
| Ampere Rating | Inches | | | | | |
|--|--------|-------|------|-------|---------|---------|
| | A | B | C | D | E | J |
| 250 VAC/500 VDC - A2Y (Amp) - 3 | | | | | | |
| 70-100 | 5-7/8 | 1 | 1/8 | 23/32 | 1-5/8 | 2-21/32 |
| 125-200 | 7-1/8 | 1-1/2 | 3/16 | 1-1/8 | 2-3/16 | 2-25/32 |
| 225-400 | 8-5/8 | 2 | 1/4 | 1-5/8 | 2-15/16 | 2-25/32 |
| 450-600 | 10-3/8 | 2-1/2 | 1/4 | 2 | 3-13/16 | 2-25/32 |
| 600 VAC/500 VDC - A6Y (Amp) - 3 | | | | | | |
| 70-100 | 7-7/8 | 1 | 1/8 | 23/32 | 2-5/8 | 2-21/32 |
| 110-200 | 9-5/8 | 1-1/2 | 3/16 | 1-1/8 | 3-7/16 | 2-25/32 |
| 225-400 | 11-5/8 | 2 | 1/4 | 1-5/8 | 4-7/16 | 2-25/32 |
| 450-600 | 13-3/8 | 2-1/2 | 1/4 | 2 | 5-5/16 | 2-25/32 |



Type 3 70-600A

TYPE 4, 70-600 AMPS - DIMENSIONS

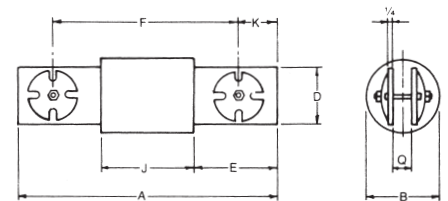
| Ampere Rating | Inches | | | | | | | | |
|--|--------|-------|------|-------|---------|--------|-------|---------|-------|
| | A | B | C | D | E | F | H | J | P |
| 250 VAC/500 VDC - A2Y (Amp) - 4 | | | | | | | | | |
| 70-100 | 5-7/8 | 1 | 1/8 | 23/32 | 1-5/8 | 4-7/8 | 13/64 | 2-21/32 | 1/2 |
| 125-200 | 7-1/8 | 1-1/2 | 3/16 | 1-1/8 | 2-3/16 | 5-3/4 | 17/64 | 2-25/32 | 11/16 |
| 225-400 | 8-5/8 | 2 | 1/4 | 1-5/8 | 2-15/16 | 6-3/4 | 21/64 | 2-25/32 | 15/16 |
| 450-600 | 10-3/8 | 2-1/2 | 1/4 | 2 | 3-13/16 | 8-1/8 | 25/64 | 2-25/32 | 1-1/8 |
| 600 VAC/500 VDC - A6Y (Amp) - 4 | | | | | | | | | |
| 70-100 | 7-7/8 | 1 | 1/8 | 23/32 | 2-5/8 | 6-7/8 | 13/64 | 2-21/32 | 1/2 |
| 125-200 | 9-5/8 | 1-1/2 | 3/16 | 1-1/8 | 3-7/16 | 8-1/4 | 17/64 | 2-25/32 | 11/16 |
| 225-400 | 11-5/8 | 2 | 1/4 | 1-5/8 | 4-7/16 | 9-3/4 | 21/64 | 2-25/32 | 15/16 |
| 450-600 | 13-3/8 | 2-1/2 | 1/4 | 2 | 5-5/16 | 11-1/8 | 25/64 | 2-25/32 | 1-1/8 |



Type 4 70-600A

TYPE 4, 650-1200 AMPS - DIMENSIONS

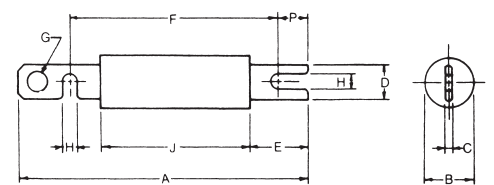
| Ampere Rating | Inches | | | | | | | |
|-------------------------------------|--------|---|---|-------|-------|-------|--------|-----|
| | A | B | D | E | F | J | K | Q |
| 600 VAC only - A6Y (Amp) - 4 | | | | | | | | |
| 650-1200 | 10-1/2 | 3 | 2 | 3-3/8 | 7-7/8 | 3-3/4 | 1-5/16 | 5/8 |



Type 4 650-1200A

TYPE 5, 125-600 AMPS - DIMENSIONS

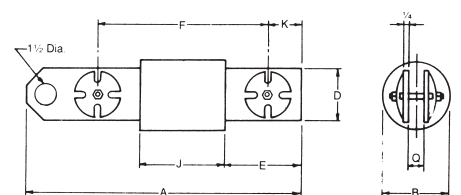
| Ampere Rating | Inches | | | | | | | | | |
|--|---------|-------|------|-------|--------|--------|-----|-------|---------|-------|
| | A | B | C | D | E | F | G | H | J | P |
| 600 VAC/500 VDC - A6Y (Amp) - 5 | | | | | | | | | | |
| 125-200 | 10-3/4 | 1-1/2 | 3/16 | 1-1/8 | 3-7/16 | 8-1/4 | 3/4 | 17/64 | 2-25/32 | 11/16 |
| 225-400 | 13-1/4 | 2 | 1/4 | 1-5/8 | 4-7/16 | 9-3/4 | 7/8 | 21/64 | 2-25/32 | 15/16 |
| 450-600 | 15-3/16 | 2-1/2 | 1/4 | 2 | 5-5/16 | 11-1/8 | 1 | 25/64 | 2-25/32 | 1 |



Type 5 125-600A

TYPE 5, 650-1200 AMPS - DIMENSIONS

| Ampere Rating | Inches | | | | | | | |
|-------------------------------------|--------|---|---|-------|-------|-------|--------|-----|
| | A | B | D | E | F | J | K | Q |
| 600 VAC only - A6Y (Amp) - 5 | | | | | | | | |
| 650-1200 | 12-1/8 | 3 | 2 | 3-3/8 | 7-7/8 | 3-3/4 | 1-5/16 | 5/8 |



Type 5 650-1200A

© 2025 Mersen. All rights reserved. Mersen reserves the right to change, update, or correct, without notice, any information contained in this datasheet.