

UL
E55826

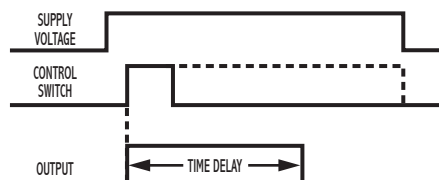
Single Shot Solid-State Output

SPECIFICATIONS

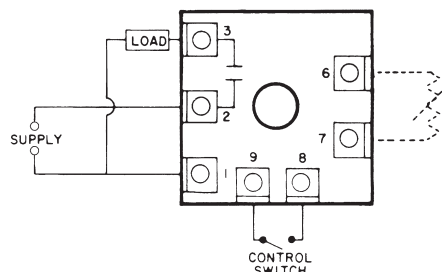
TIMING RANGES	Virtually unlimited. See page 77 for standard ranges available.	
OUTPUT RATING	Solid-state, SPST-N.O. 1 amp resistive; 1 amp 25VA @ 24VAC 1 amp 125VA @ 120VAC .5 amp 125VA @ 240 VAC	
TIMING TOLERANCES	Minimum Setting	+0 – 20%
	Maximum Setting	±10%
REPEATABILITY	1% maximum; no first cycle effect	
RESET TIMES	Before Time Out	100 mSEC
	After Time Out	50 mSEC
RECYCLE TIME	40 mSEC	
SUPPLY VOLTAGE	24, 120, or 240 VAC, 50/60 Hz; ±10%	
FALSE TRANSFER	No	
ENCLOSURE	Surface mounted; totally encapsulated with a high quality epoxy for environmental protection.	
TEMPERATURE RATING	Operate	32° to 131°F (0° to +55°C)
	Storage	-49° to 185°F (-45° to +85°C)
TERMINATIONS	1/4" quick disconnect terminals	
WEIGHT	NET: 1.28 oz Shipping: 1.6 oz.	

OPERATION

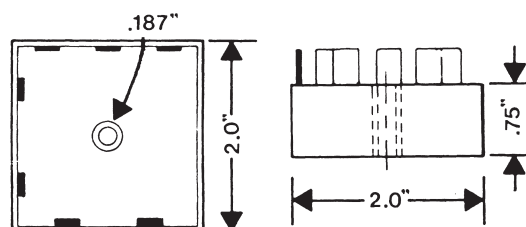
Voltage is continuously applied to the input. An external isolated switch controls the timer. When closed (momentary or maintained), the load energizes and the delay period begins. Upon completion of the delay period, the load de-energizes.



WIRING



DIMENSIONS (INCHES)



MODEL NUMBER

MODEL NUMBER	TSE		A		C	
SUPPLY VOLTAGE						
24 VAC		24				
120 VAC		120				
240 VAC		240				
TYPE OF OPERATION						
Fixed				F		
External Resistor Adjustable; See page 82 for resistor selection.				R		
DELAY PERIOD						
See page 82 for standard ranges available						

Example: TSE-120-AFC-180—Single shot, 120 VAC, fixed delay of 180 seconds, UL recognized.