

Features

Compact, Single-Point Devices for Error-Proofing of Bin-Picking Operations

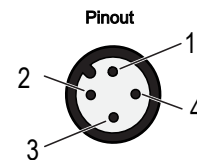
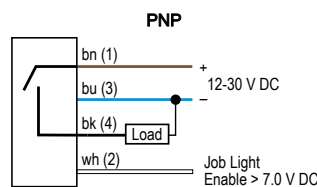
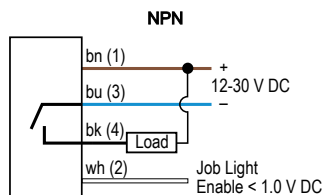


- Rugged, cost-effective, and easy-to-install solutions for error-proofing and parts-verification applications
- Compact devices are completely self-contained, no controller is needed
- Illuminated dome provides an easy-to-see green job light: some models also light red for alternate operation
- Waterproof construction for washdown environments
- Easy actuation, no force required
- 12 V DC to 30 V DC operation
- Can be actuated with bare hands or gloves

Models

Model	Function	Output	Connection ⁽¹⁾	Job Light
K30APTGXQDQ	<ul style="list-style-type: none"> • Job light is ON at all times while job input is active • Touch activates output 	PNP, NO	Integral 4-pin M12 male quick-disconnect connector	Green
K30RPTGXQDQ		PNP, NC		
K30ANTGXQDQ		NPN, NO		
K30RNTGXQDQ		NPN, NC		
K30APTGRQDQ	<ul style="list-style-type: none"> • Job light is Green while job input is active • Touch activates output and overrides job light (turns Red) for visual verification that action was sensed 	PNP, NO		Green (Red)
K30RPTGRQDQ		PNP, NC		
K30ANTGRQDQ		NPN, NO		
K30RNTGRQDQ		NPN, NC		
K30APTGREQ	<ul style="list-style-type: none"> • Job light is Green at all times while job input is active • Touch activates output • A touch while job input is inactive causes unit to light Red, providing visual verification that sensor is functioning properly 	PNP, NO		Green (Red)
K30RPTGREQ		PNP, NC		
K30ANTGREQ		NPN, NO		
K30RNTGREQ		NPN, NC		

Wiring



NOTE: Cabled wiring diagrams are shown. Quick disconnect wiring diagrams are functionally identical.

Specifications

Supply Voltage

12 V DC to 30 V DC

Supply Current

55 mA max current (exclusive of load)

Supply Protection Circuitry

Protected against reverse polarity and transient voltages

Output Rating

Maximum load: 150 mA

ON-state saturation voltage: < 2 V DC at 10 mA; < 2.5 V DC at 150 mA

OFF-state leakage current: < 10 µA at 30 V DC

Output Response Time:

150 milliseconds On and Off

⁽¹⁾ Integral quick-disconnect connector models are listed.

- To order the 2 m (6.5 ft) PVC cable model, omit the suffix "Q" in the model number. For example, K30APTGXQD.
- To order the 150 mm (6 in) PVC cable model with a 4-pin M12 male quick-disconnect connector, replace the suffix "Q" with "QP" in the model number. For example, K30APTGXQDQP.
- To order the terminal model, replace the suffix "Q" with "T" in the model number. For example, K30APT2GXDT.
- Models with a quick-disconnect connector require a mating cordset.

Environmental Rating

IP67, IP69K per ISO 20653.
Cabled models also meet IP69K if the cable and cable entrance are protected from high-pressure spray.
Enclosure Type 4X, 13

Operating Conditions

Temperature: -40 °C to +50 °C (-40 °F to +122 °F)
Humidity: 90% at +50 °C maximum relative humidity (non-condensing)

Storage

-40 °C to +70 °C (-40 °F to +158 °F)

Power-Up Delay

300 milliseconds

Construction

Housing: polycarbonate
Translucent dome: polycarbonate
Mounting nut: PBT

Vibration and Mechanical Shock

All models meet MIL-STD-202F, Method 201A (Vibration: 10 Hz to 60 Hz maximum, 0.06 inch (1.52 mm) double amplitude, 10G maximum acceleration) requirements. Also meets IEC 60947-5-2 (Shock: 30G 11 ms duration, half sine wave) requirements.

Indicators

Job (pick) indicator: Green
Pick sensed indicator: Red or unilluminated, depending on model

Mounting

M22 × 1.5 Threaded base, max torque 2.25 N·m (20 in-lbf)

Connections

Integral 4-pin M12 male quick-disconnect connector, or 2 m (6.5 ft) integral PVC-jacketed cable

Required Overcurrent Protection



WARNING: Electrical connections must be made by qualified personnel in accordance with local and national electrical codes and regulations.

Overcurrent protection is required to be provided by end product application per the supplied table. Overcurrent protection may be provided with external fusing or via Current Limiting, Class 2 Power Supply.
Supply wiring leads < 24 AWG shall not be spliced.
For additional product support, go to www.bannerengineering.com.

Supply Wiring (AWG)	Required Overcurrent Protection (A)	Supply Wiring (AWG)	Required Overcurrent Protection (A)
20	5.0	26	1.0
22	3.0	28	0.8
24	2.0	30	0.5

Certifications

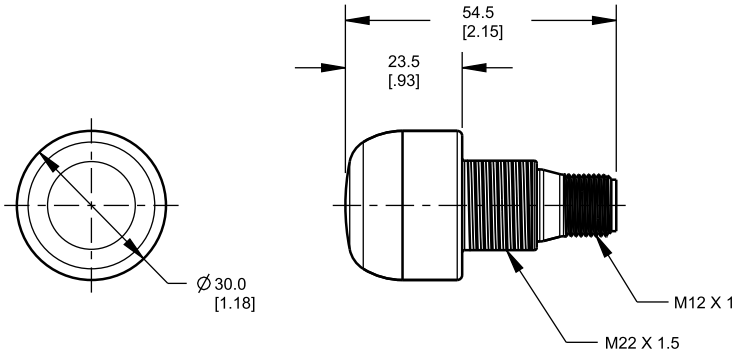


Banner Engineering BV
Park Lane, Culliganlaan 2F bus 3
1831 Diegem, BELGIUM



Dimensions

All measurements are listed in millimeters [inches], unless noted otherwise. The measurements provided are subject to change.



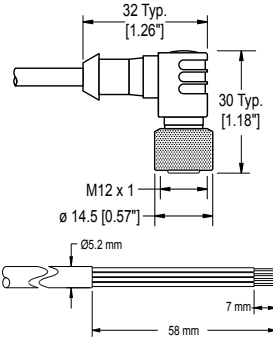
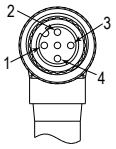
Accessories

Cordsets

4-Pin Single-Ended M12 Female Cordsets				
Model	Length	Style	Dimensions	Pinout (Female)
MQDC-406	2 m (6.56 ft)	Straight		
MQDC-415	5 m (16.4 ft)			
MQDC-430	9 m (29.5 ft)			
MQDC-450	15 m (49.2 ft)			

Continued on page 3

Continued from page 2

4-Pin Single-Ended M12 Female Cordsets				
Model	Length	Style	Dimensions	Pinout (Female)
MQDC-406RA	2 m (6.56 ft)	Right-Angle		
MQDC-415RA	5 m (16.4 ft)			
MQDC-430RA	9 m (29.5 ft)			
MQDC-450RA	15 m (49.2 ft)			

Brackets

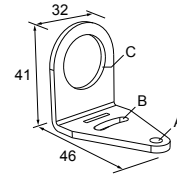
All measurements are listed in millimeters, unless noted otherwise. The measurements provided are subject to change.

SMB22A

- Right-angle bracket with curved slot for versatile orientation
- 12-ga. stainless steel
- Mounting hole for 22 mm sensor

Hole center spacing: A to B = 26.0

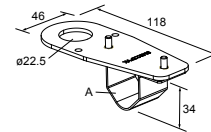
Hole size: A = \varnothing 4.6, B = 4.6 x 16.9, C = 22.2



SMB22FVK

- V-clamp, flat bracket and fasteners for mounting to pipe or extensions
- Clamp accommodates 28 mm diameter tubing or 1 in. square extrusions
- 22 mm hole for mounting sensor

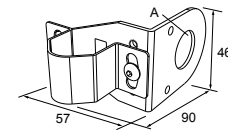
Hole size: A = \varnothing 22.5



SMB22RAVK

- V-clamp, right-angle bracket and fasteners for mounting to pipe or extensions
- Clamp accommodates 28 mm diameter tubing or 1 in. square extrusions
- 22 mm hole for mounting sensor

Hole size: A = \varnothing 22.5

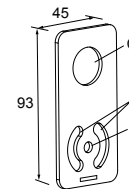


SMBAMS22P

- Flat SMBAMS series bracket with 22 mm hole for mounting sensors
- Articulation slots for 90+° rotation
- 12-ga. (2.6 mm) cold-rolled steel

Hole center spacing: A = 26.0, A to B = 13.0

Hole size: A = 26.8 x 7.0, B = \varnothing 6.5, C = \varnothing 22.5

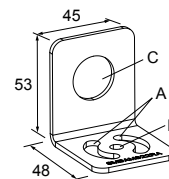


SMBAMS22RA

- Right-angle SMBAMS series bracket with 22 mm hole for mounting sensors
- Articulation slots for 90+° rotation
- 12-ga. (2.6 mm) cold-rolled steel

Hole center spacing: A = 26.0, A to B = 13.0

Hole size: A = 26.8 x 7.0, B = \varnothing 6.5, C = \varnothing 22.5

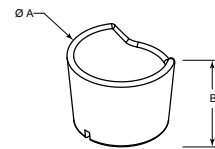


TC-K30-CL

- Touch cover

Diameter: A = 40.7 mm

Height: B = 31 mm



Banner Engineering Corp Limited Warranty

Banner Engineering Corp. warrants its products to be free from defects in material and workmanship for one year following the date of shipment. Banner Engineering Corp. will repair or replace, free of charge, any product of its manufacture which, at the time it is returned to the factory, is found to have been defective during the warranty period. This warranty does not cover damage or liability for misuse, abuse, or the improper application or installation of the Banner product.

THIS LIMITED WARRANTY IS EXCLUSIVE AND IN LIEU OF ALL OTHER WARRANTIES WHETHER EXPRESS OR IMPLIED (INCLUDING, WITHOUT LIMITATION, ANY WARRANTY OF MERCHANTABILITY OR FITNESS FOR A PARTICULAR PURPOSE), AND WHETHER ARISING UNDER COURSE OF PERFORMANCE, COURSE OF DEALING OR TRADE USAGE.

This Warranty is exclusive and limited to repair or, at the discretion of Banner Engineering Corp., replacement. **IN NO EVENT SHALL BANNER ENGINEERING CORP. BE LIABLE TO BUYER OR ANY OTHER PERSON OR ENTITY FOR ANY EXTRA COSTS, EXPENSES, LOSSES, LOSS OF PROFITS, OR ANY INCIDENTAL, CONSEQUENTIAL OR SPECIAL DAMAGES RESULTING FROM ANY PRODUCT DEFECT OR FROM THE USE OR INABILITY TO USE THE PRODUCT, WHETHER ARISING IN CONTRACT OR WARRANTY, STATUTE, TORT, STRICT LIABILITY, NEGLIGENCE, OR OTHERWISE.**

Banner Engineering Corp. reserves the right to change, modify or improve the design of the product without assuming any obligations or liabilities relating to any product previously manufactured by Banner Engineering Corp. Any misuse, abuse, or improper application or installation of this product or use of the product for personal protection applications when the product is identified as not intended for such purposes will void the product warranty. Any modifications to this product without prior express approval by Banner Engineering Corp will void the product warranties. All specifications published in this document are subject to change; Banner reserves the right to modify product specifications or update documentation at any time. Specifications and product information in English supersede that which is provided in any other language. For the most recent version of any documentation, refer to:

www.bannerengineering.com.

For patent information, see www.bannerengineering.com/patents.