

## Features

*Compact Indicator with One, Two, or Three Colors and a Momentary Push Button Output*



- Rugged, cost-effective, and easy-to-install multicolor indicator light with pushbutton
- Waterproof IP65 construction for washdown environments
- Excellent for panel mounting or as a stand-alone device
- Immune to EMI and RFI interference
- 10 V DC to 30 V DC operation
- Cabled and Quick Disconnect models available
- Up to three independent colors in one unit

### WARNING:



- **Do not use this device for personnel protection**
- Using this device for personnel protection could result in serious injury or death.
- This device does not include the self-checking redundant circuitry necessary to allow its use in personnel safety applications. A device failure or malfunction can cause either an energized (on) or de-energized (off) output condition.

## Models

Family	Color 1	Color 2	Color 3	Input	Output	Connector <sup>(1)</sup>
K30L	G	R	Y	P	PB2	Q
	G = Green R = Red Y = Yellow B = Blue W = White O = Orange T = Turquoise V = Violet M = Magenta X = No color in this position			P = PNP	PB2 = Momentary Push Button	Blank = 2 m (6.5 ft) integral PVC-jacketed cable Q = Integral M12 male quick-disconnect connector QP = 150 mm (6 in) PVC-jacketed cable with an M12 male quick-disconnect connector

Example Model	# of LED Colors	LED Indicators	Connection
K30LGXXPPB2Q	1	Green	Integral 4-pin M12 male quick-disconnect connector
K30LRXXPPB2Q		Red	
K30LGRXPPB2Q	2	Green, Red	Integral 5-pin M12 male quick-disconnect connector
K30LGYXPPB2Q		Green, Yellow	
K30LGRYPPB2Q	3	Green, Red, Yellow	Integral 8-pin M12 male quick-disconnect connector

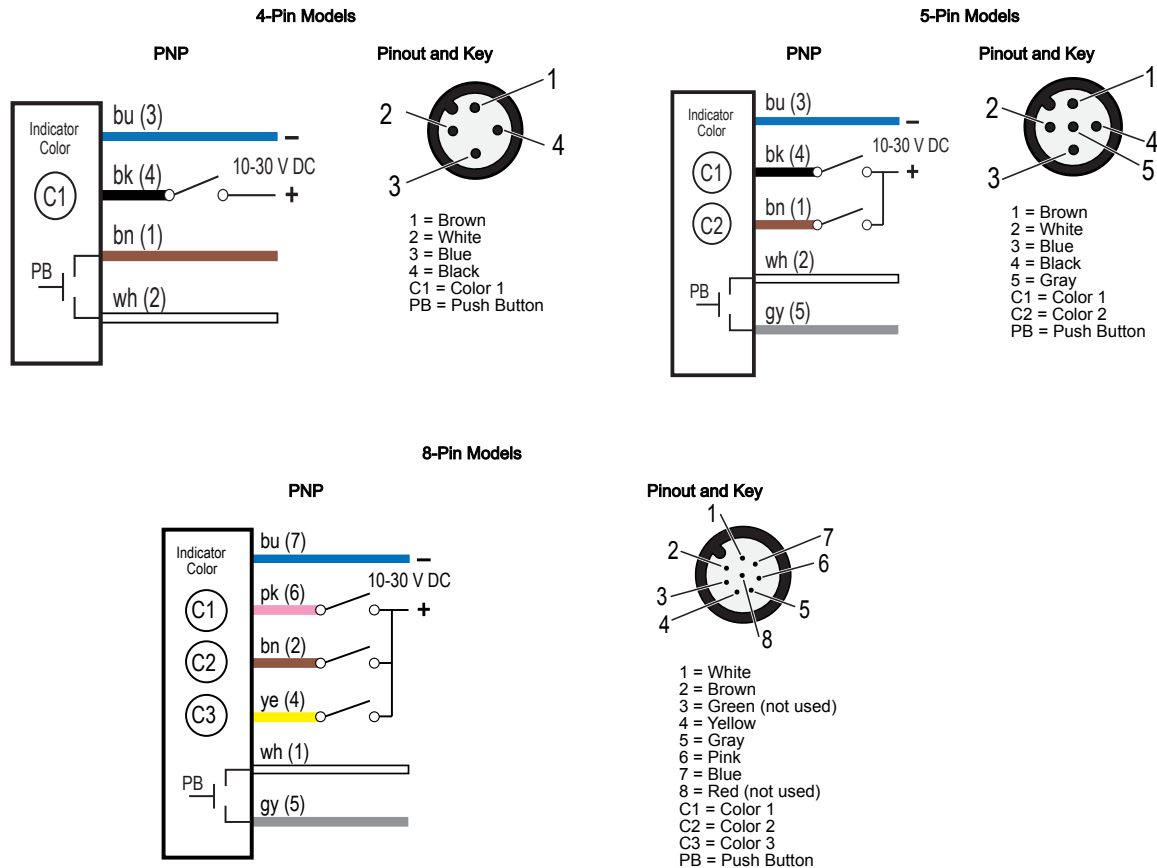
<sup>(1)</sup> Integral quick-disconnect connector models are listed.

- To order the 2 m (6.5 ft) PVC cable model, omit the suffix "Q" in the model number. For example, K30LGXXPPB2
- To order the 150 mm (6 in) PVC cable model, replace the suffix "Q" with "QP" in the model number. For example, K30LGXXPPB2QP
- Models with a quick-disconnect connector require a mating cordset.

## Installation

Install the K30 at a height and location that is easy for the user and/or supervisor to see the device, and comfortable for the user to press the push-button.

## Wiring



## Specifications

### Supply Voltage and Current

10 V DC to 30 V DC at 40 mA maximum per LED color

### Supply Protection Circuitry

Protected against reverse polarity and transient voltages

### Indicator Response Time

ON/OFF: 1 ms maximum

### Switch Contact Rating

150 mA at 30 V DC

### Contact Bounce

10 ms maximum

### Environmental Rating

IP65

Enclosure Type 13

### Construction

Base: polycarbonate

Translucent dome: polycarbonate

Push button: thermoplastic

### Mounting Torque

2.25 Nm (20 in·lbf) max.

### Connections

Integral 4-pin, 5-pin, or 8-pin M12 male quick-disconnect connector, 2 m (6.5 ft) integral PVC-jacketed cable, or 150 mm (6 in) PVC-jacketed cable with a 4-pin, 5-pin, or 8-pin M12 quick-disconnect connector, depending on the model ordered

### Operating Conditions

−40 °C to +50 °C (−40 °F to +122 °F)

90% at +50 °C maximum relative humidity (non-condensing)

Storage Temperature: −40 °C to +70 °C (−40 °F to +158 °F)

### Certifications



Banner Engineering BV  
Park Lane, Culliganlaan 2F bus 3  
1831 Diegem, BELGIUM



Required Overcurrent Protection



**WARNING:** Electrical connections must be made by qualified personnel in accordance with local and national electrical codes and regulations.

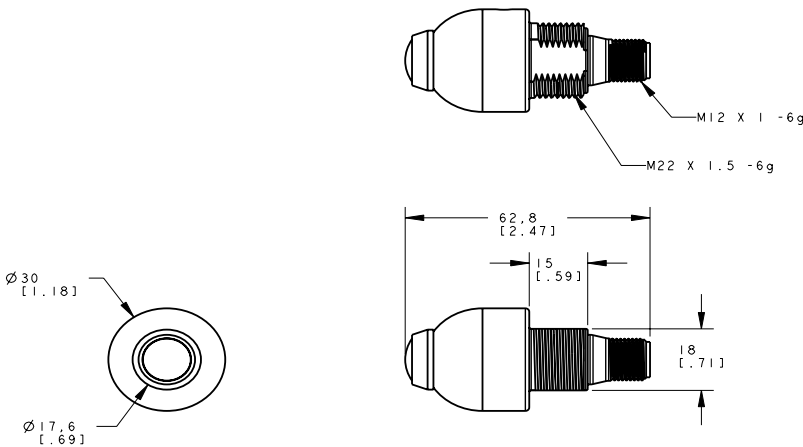
Overcurrent protection is required to be provided by end product application per the supplied table.  
Overcurrent protection may be provided with external fusing or via Current Limiting, Class 2 Power Supply.

Supply wiring leads < 24 AWG shall not be spliced.  
For additional product support, go to [www.bannerengineering.com](http://www.bannerengineering.com).

Supply Wiring (AWG)	Required Overcurrent Protection (A)	Supply Wiring (AWG)	Required Overcurrent Protection (A)
20	5.0	26	1.0
22	3.0	28	0.8
24	2.0	30	0.5

Dimensions

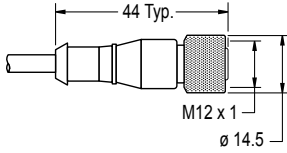


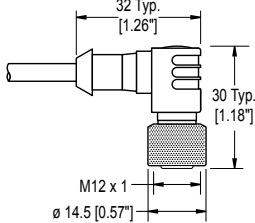
All measurements are listed in millimeters [inches], unless noted otherwise. The measurements provided are subject to change.

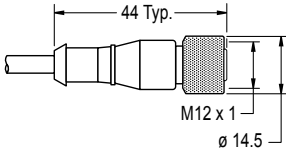
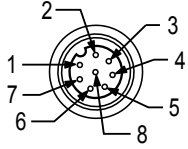


Accessories

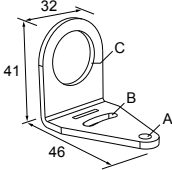
Cordsets

4-Pin Single-Ended M12 Female Cordsets					
Model	Length	Style	Dimensions	Pinout (Female)	
MQDC-403	1 m (3.28 ft)	Straight			<p>1 = Brown 2 = White 3 = Blue 4 = Black 5 = Not used</p>
MQDC-406	2 m (6.56 ft)				
MQDC-410	3 m (9.8 ft)				
MQDC-415	5 m (16.4 ft)				
MQDC-430	9 m (29.5 ft)				
MQDC-450	15 m (49.2 ft)				
MQDC-460	18.3 m (60 ft)				
MQDC-470	21 m (68.9 ft)				
MQDC-4100	30 m (98.43 ft)				

5-Pin Single-Ended M12 Female Cordsets				
Model	Length	Style	Dimensions	Pinout (Female)
MQDC1-501.5	0.5 m (1.5 ft)	Straight		 <p>1 = Brown 2 = White 3 = Blue 4 = Black 5 = Gray</p> 
MQDC1-503	0.9 m (2.9 ft)			
MQDC1-506	2 m (6.5 ft)			
MQDC1-515	5 m (16.4 ft)			
MQDC1-530	9 m (29.5 ft)			
MQDC1-560	18 m (59 ft)			
MQDC1-5100	31 m (101.7 ft)			
MQDC1-506RA	2 m (6.5 ft)	Right-Angle		
MQDC1-515RA	5 m (16.4 ft)			
MQDC1-530RA	9 m (29.5 ft)			
MQDC1-560RA	19 m (62.3 ft)			

8-Pin Single-Ended M12 Female Shielded Cordsets				
Model	Length	Style	Dimensions	Pinout (Female)
MQDC-806	2 m (6.56 ft)	Straight		
MQDC-815	5 m (16.4 ft)			<p>1 = White 2 = Brown 3 = Green 4 = Yellow</p>
MQDC-830	9 m (29.53 ft)			<p>5 = Gray 6 = Pink 7 = Blue 8 = Shield</p>

## Brackets

<p><b>SMB22A</b></p> <ul style="list-style-type: none"> <li>Right-angle bracket with curved slot for versatile orientation</li> <li>12-ga. stainless steel</li> <li>Mounting hole for 22 mm sensor</li> </ul> <p><b>Hole center spacing:</b> A to B = 26.0  <b>Hole size:</b> A = <math>\varnothing</math> 4.6, B = 4.6 x 16.9, C = 22.2</p>	
--	---

## Banner Engineering Corp Limited Warranty

Banner Engineering Corp. warrants its products to be free from defects in material and workmanship for one year following the date of shipment. Banner Engineering Corp. will repair or replace, free of charge, any product of its manufacture which, at the time it is returned to the factory, is found to have been defective during the warranty period. This warranty does not cover damage or liability for misuse, abuse, or the improper application or installation of the Banner product.

**THIS LIMITED WARRANTY IS EXCLUSIVE AND IN LIEU OF ALL OTHER WARRANTIES WHETHER EXPRESS OR IMPLIED (INCLUDING, WITHOUT LIMITATION, ANY WARRANTY OF MERCHANTABILITY OR FITNESS FOR A PARTICULAR PURPOSE), AND WHETHER ARISING UNDER COURSE OF PERFORMANCE, COURSE OF DEALING OR TRADE USAGE.**

This Warranty is exclusive and limited to repair or, at the discretion of Banner Engineering Corp., replacement. **IN NO EVENT SHALL BANNER ENGINEERING CORP. BE LIABLE TO BUYER OR ANY OTHER PERSON OR ENTITY FOR ANY EXTRA COSTS, EXPENSES, LOSSES, LOSS OF PROFITS, OR ANY INCIDENTAL, CONSEQUENTIAL OR SPECIAL DAMAGES RESULTING FROM ANY PRODUCT DEFECT OR FROM THE USE OR INABILITY TO USE THE PRODUCT, WHETHER ARISING IN CONTRACT OR WARRANTY, STATUTE, TORT, STRICT LIABILITY, NEGLIGENCE, OR OTHERWISE.**

Banner Engineering Corp. reserves the right to change, modify or improve the design of the product without assuming any obligations or liabilities relating to any product previously manufactured by Banner Engineering Corp. Any misuse, abuse, or improper application or installation of this product or use of the product for personal protection applications when the product is identified as not intended for such purposes will void the product warranty. Any modifications to this product without prior express approval by Banner Engineering Corp will void the product warranties. All specifications published in this document are subject to change; Banner reserves the right to modify product specifications or update documentation at any time.

Specifications and product information in English supersede that which is provided in any other language. For the most recent version of any documentation, refer to:  
[www.bannerengineering.com](http://www.bannerengineering.com).

For patent information, see [www.bannerengineering.com/patents](http://www.bannerengineering.com/patents).