

1. General Description

CQ-362x is an open-type current sensor using Hall sensors. It has a Sigma Delta modulator producing a 1-bit data stream whose density is proportional to an AC current / a DC current. Ultra-low noise property is realized by III-V compound semiconductor Hall elements. Coreless ultra-small surface mount package realizes the space-saving. In addition, the low primary conductor resistance suppresses heat generation to achieve the 60A_{rms} continuous current. These features contribute to miniaturize your substrate and system size.

The CQ-362x series also has isolation performance as defined by safety standard of UL 61800-5-1, which is an excellent fit for robotics, AC servo motors, and so on.

2. Features

- Σ - Δ modulator 10MHz(Input Clock)
- Ultra-low noise(Effective number of bits:12.3~14.7 bits)
- Small-sized surface mount package (12.7mm×10.9mm×2.25mm)
- Maximum primary current : 60A_{rms}
- Quite small primary conductor resistance : 0.27m Ω Typ.
- No need of isolated power supply
- Stray magnetic field reduction function
- Isolation performance as defined by safety standard of UL61800-5-1
- Certified with safety standard of UL-1577 and IEC/UL62368-1.
- Isolation Voltage:5.0kV (AC50Hz, 60s)

**3. Applications**

- Robotics
- AC Servo motors

CQ-362x is suitable for other applications which are required isolation with small size and suppressing the heating. (For example, Shunt + Isolated ADC replacement)

4. Table of Contents

1. General Description	1
2. Features	1
3. Applications	1
4. Table of Contents	2
5. CQ-36xx Series	3
6. Block Diagram and Functions	4
6.1. Block Diagram	4
6.2. Functions	4
7. Pin Configurations and Functions	5
7.1. Pin Configurations	5
7.2. Functions	5
8. Absolute Maximum Ratings	6
9. Recommended Operating Conditions	6
10. Electrical Characteristics	7
11. Characteristic Descriptions	11
12. Recommended External Circuits	13
13. Board Layout for Measuring Thermal Resistance	13
14. Package	14
14.1. Outline Dimensions	14
14.2. Standards	15
14.3. Recommended Pad Dimensions	15
14.4. Marking	16
15. Reliability Tests	17
16. Precautions	18
17. Revision History	19
IMPORTANT NOTICE	20

5. CQ-36xx Series

Table 1. CQ-36xx Series

AVDD (V)	DVDD (V)	Ratio / Non-ratio	Output Voltage (V)	Maximum Primary Current (Arms)	Clock Type	Clock Frequency (MHz)	Series
5.0	3.3	Non-Ratio	3.3	60	Input	20	CQ-360x
					Output	20	CQ-361x
					Input	10	CQ-362x
					Output	10	CQ-363x

Table 2. Sensitivity and Linear Sensing Range

Part Number	I _{NS} (A)	Sensitivity (%/A)
CQ-36x1	±10.5	4.00
CQ-36x2	±21	2.00
CQ-36x3	±42	1.00
CQ-36x4	±60	0.700
CQ-36x5	±84	0.500
CQ-36x6	±168	0.250

6. Block Diagram and Functions

6.1. Block Diagram

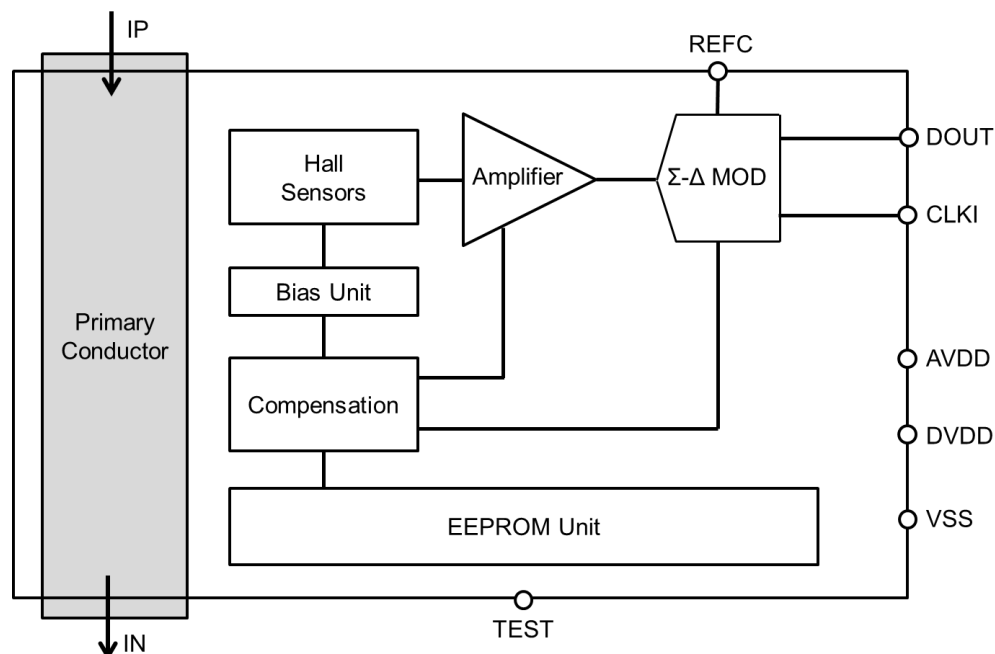


Figure 1. Block diagram of CQ-362x

6.2. Functions

Table 3. Explanation of circuit blocks

Circuit Block	Function
Primary Conductor	A device has the primary conductor built-in.
Hall Sensors	Hall elements which detect magnetic flux density generated from the measured current.
Amplifier	Amplifier of Hall elements' output.
Σ-Δ MOD	Σ-Δ modulator. C-MOS data output type. Operated by input clock.
Compensation	Compensation circuit which adjusts the temperature drifts of sensitivity and zero-current output.
Bias Unit	Drive circuit for Hall elements.
EEPROM Unit	Non-volatile memory for setting adjustment parameters.

7. Pin Configurations and Functions

7.1. Pin Configurations

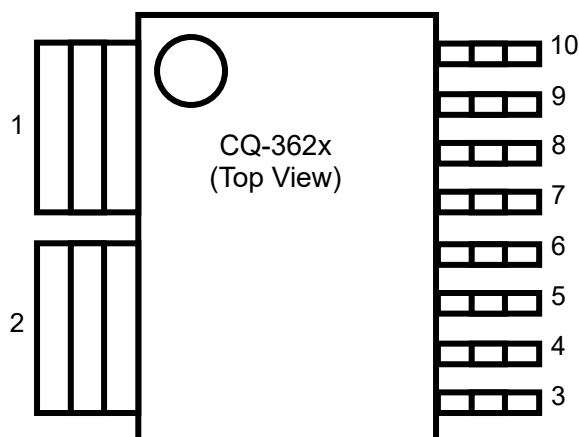


Figure 2. Pin configurations of CQ-362x

7.2. Functions

Table 4. Pin configuration and functions of CQ-362x

Pin No.	Pin Name	I/O	Type	Function
1	IP	I	-	Primary conductor pin (+)
2	IN	I	-	Primary conductor pin (-)
3	VSS	GND	-	Ground pin (GND)
4	REFC	—	-	External capacitor pin for Σ - Δ MOD
5	TEST	—	-	Test pin(Recommended external connection: GND)
6	DOUT	O	Digital	Data output pin(3.3V)
7	CLKI	I	Digital	Input clock pin (3.3V, 10MHz)
8	DVDD	PWR	Power	Digital power supply pin (3.3V)
9	AVDD	PWR	Power	Analog power supply pin (5V)
10	VSS	GND	-	Ground pin (GND)

An input current of 0A to the primary conductor ideally produces a data stream of 50% zeros of the time and 50% ones of the time. An input current of $+I_{NS}$ (IP to IN) to the primary conductor produces a data stream of 8% zeros of the time and 92% ones of the time. An input current of $-I_{NS}$ (IP to IN) to the primary conductor produces a data stream of 92% zeros of the time and 8% ones of the time. Full scale (F.S.) of output density is defined as 84%, which is the value between 8% and 92% ($-I_{NS}$ to $+I_{NS}$).

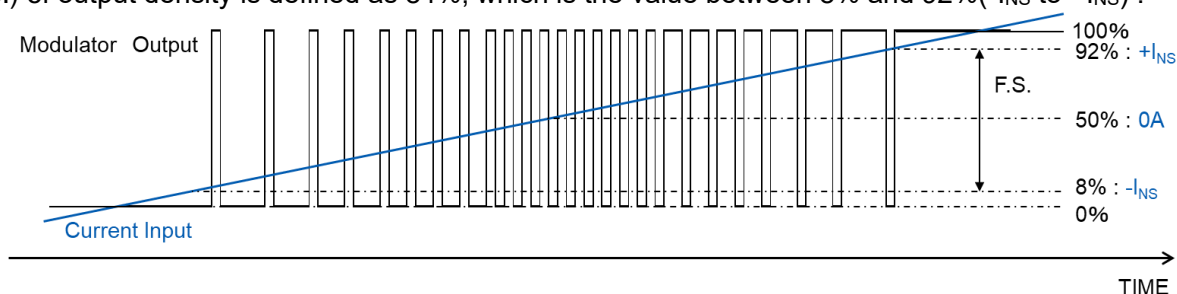


Figure 3. Typical output characteristics of CQ-362x

8. Absolute Maximum Ratings

Table 5. Absolute maximum ratings

Parameter	Symbol	Min.	Max.	Units	Notes
Analog Supply Voltage	AVDD	-0.3	6.5	V	AVDD pin
Digital Supply Voltage	DVDD	-0.3	6.5	V	DVDD pin
Digital Output Current	I _{OUT}	-10	10	mA	DOUT pin
CLKI Input Voltage	V _{clki}	-0.3	DVDD+0.3	V	CLKI pin
Junction Temperature	T _j	-40	150	°C	
Storage Temperature	T _{STG}	-55	150	°C	

WARNING:

Operation at or beyond these limits may result in permanent damage to the device. Normal operation is not guaranteed at these extremes.

9. Recommended Operating Conditions

Table 6. Recommended operating conditions

Parameter	Symbol	Min.	Typ.	Max.	Units	Notes
Analog Supply Voltage	AVDD	4.5	5.0	5.5	V	AVDD pin
Digital Supply Voltage	DVDD	3.0	3.3	3.6	V	DVDD pin
Sensor Output Load Capacitance	C _{LDOUT}			30	pF	Between DOUT pin and VSS pin
Sensor Output Load Resistance	R _{LDOUT}	18			kΩ	Between DOUT pin and VSS pin
Operating Ambient Temperature	T _a	-40		125	°C	
Case Temperature Note 1)	T _c	-40		130	°C	Under the condition of safety standard of UL61800-5-1
Maximum Primary Current (RMS)	I _{RMSmax}			60	A _{rms}	Continuous DC value or RMS value which can be applied to the primary conductor

WARNING:

Electrical characteristics are not guaranteed when operated at or beyond these conditions.

Note1) Continuous 60A_{rms} current can be flowed through this IC, and even a larger current can be flowed transiently. Using as your system under the condition of safety standard of UL61800-5-1, the case temperature of this IC should be less than 130°C.

10. Electrical Characteristics

Table 7. Electrical Characteristics

Conditions (unless otherwise specified) :

 $T_a = 35^{\circ}\text{C}$, $\text{AVDD} = 5.0\text{V}$, $\text{DVDD} = 3.3\text{V}$, $\text{CLKI} = 10\text{MHz}$, 16bit, and Sinc3 filter with $\text{OSR} = 256$

Parameter	Symbol	Conditions	Min.	Typ.	Max.	Units
Analog Current Consumption	I_{AVDD}	$I_{\text{IN}} = 0\text{A}$, $C_L = 30\text{pF}$		46.5	56.3	mA
Digital Current Consumption	I_{DVDD}			1.2	1.5	
Sensitivity Note 2)	D_h		CQ-3621	3.96	4.00	%A
			CQ-3622	1.98	2.00	
			CQ-3623	0.990	1.00	
			CQ-3624	0.693	0.700	
			CQ-3625	0.495	0.500	
			CQ-3626	0.247	0.250	
Zero-Current Output Note 2)	D_{of}	$I_{\text{IN}} = 0\text{A}$	49.58	50	50.42	%
Output Saturation Density H	D_{satH}	$I_{\text{IN}} = +I_{\text{NS}}$	92			%
Output Saturation Density L	D_{satL}	$I_{\text{IN}} = -I_{\text{NS}}$			8	%
Linear Sensing Range Note 3)	I_{NS}		CQ-3621	-10.5	10.5	A
			CQ-3622	-21	21	
			CQ-3623	-42	42	
			CQ-3624	-60	60	
			CQ-3625	-84	84	
			CQ-3626	-168	168	
Linearity Error Note 2) Note 3)	ρ		CQ-3621	-0.35	± 0.26	%F.S.
			CQ-3622	-0.35	± 0.26	
			CQ-3623	-0.35	± 0.26	
			CQ-3624	-0.35	± 0.26	
			CQ-3625	-0.35	± 0.26	
			CQ-3626	-0.45	± 0.35	
Response Time Note 4)	t_r	ΔI_{IN} 90% to ΔD_{out} 90%, Sinc3 filter with $\text{OSR} = 64$		26		μs
Bandwidth Note 4)	f_T	Sinc3 filter with $\text{OSR} = 64$		40		kHz
Signal-to-Noise Ratio	S_{NR}	$I_{\text{IN}} = 0\text{A}$	CQ-3621	75.8		dB
			CQ-3622	80.6		
			CQ-3623	86.0		
			CQ-3624	87.8		
			CQ-3625	89.1		
			CQ-3626	90.3		
Effective Number of Bits	E_{NOB}	$I_{\text{IN}} = 0\text{A}$	CQ-3621	12.3		bits
			CQ-3622	13.1		
			CQ-3623	14.0		
			CQ-3624	14.3		
			CQ-3625	14.5		
			CQ-3626	14.7		

Parameter	Symbol	Conditions	Min.	Typ.	Max.	Units
PSRR	P_{srr}	200mVpp sine wave on AVDD, frequency=1MHz		-110		dB
Stray Magnetic Field Reduction	E_{bc}	Equivalent to zero-current output drift -10mT < stray Magnetic field < 10mT		±0.01		A/mT
Primary Conductor Resistance Note 3)	R_P	$T_c = 35^{\circ}\text{C}$		0.27		mΩ
Thermal Resistance Junction to Ambient	θ_{ja}	Board Layout is Figure 8. $\Delta T = R_P \times I_{IN}^2 \times \theta_{ja} / 1000$		29		°C/W
Isolation Voltage Note 6)	V_{INS}	AC50Hz, 60s	5.0			kV _{rms}
Isolation Resistance Note 3)	R_{INS}	DC1kV	500			MΩ
Retention Time of EEPROM data	EEP_{RT}	$T_j = 105^{\circ}\text{C}$	10			Year
		$T_j = 100^{\circ}\text{C}$	15			

Table 8. Temperature drift characteristics

Conditions (unless otherwise specified) :

AVDD = 5.0V, DVDD = 3.3V, CLKI=10MHz, 16bit, and Sinc3 filter with OSR =256

Parameter	Symbol	Conditions		Min.	Typ.	Max.	Units
Temperature Drift of Sensitivity Note 5) Note 7) Note 8)	D _{h-d}	T _a =-10~85°C		-0.9	0.8	1.3	%
		T _a =-10~125°C		-0.9	0.8	1.3	
		T _a =-40~125°C		-0.9	2.2	3.3	
Temperature Drift of Zero-current Output Note 5) Note 7) Note 8)	D _{of_d}	T _a = -10~85°C I _{IN} =0A	CQ-3621	-0.09	±0.04	0.08	%F.S.
			CQ-3622	-0.04	±0.02	0.04	
			CQ-3623	-0.03	±0.01	0.03	
			CQ-3624	-0.02	±0.01	0.02	
			CQ-3625	-0.02	±0.01	0.02	
			CQ-3626	-0.02	±0.01	0.02	
		T _a = -10~125°C I _{IN} =0A	CQ-3621	-0.11	±0.04	0.11	%F.S.
			CQ-3622	-0.05	±0.03	0.06	
			CQ-3623	-0.03	±0.02	0.04	
			CQ-3624	-0.02	±0.01	0.03	
			CQ-3625	-0.02	±0.01	0.03	
			CQ-3626	-0.02	±0.01	0.02	
		T _a = -40~125°C I _{IN} =0A	CQ-3621	-0.13	±0.05	0.12	%F.S.
			CQ-3622	-0.07	±0.03	0.07	
			CQ-3623	-0.03	±0.02	0.04	
			CQ-3624	-0.03	±0.01	0.03	
			CQ-3625	-0.03	±0.01	0.03	
			CQ-3626	-0.02	±0.01	0.02	
Total Accuracy Note 5) Note 8)	E _{total}	T _a = -10~85°C	CQ-3621	-1.3	0.9	1.5	%F.S.
			CQ-3622	-1.3	0.8	1.4	
			CQ-3623	-1.2	0.8	1.4	
			CQ-3624	-1.2	0.8	1.4	
			CQ-3625	-1.2	0.8	1.4	
			CQ-3626	-1.3	0.9	1.5	
		T _a = -10~125°C	CQ-3621	-1.3	0.9	1.5	
			CQ-3622	-1.3	0.8	1.4	
			CQ-3623	-1.2	0.8	1.4	
			CQ-3624	-1.2	0.8	1.4	
			CQ-3625	-1.2	0.8	1.4	
			CQ-3626	-1.3	0.9	1.5	
		T _a = -40~125°C	CQ-3621	-1.3	1.5	2.5	
			CQ-3622	-1.3	1.5	2.5	
			CQ-3623	-1.2	1.4	2.4	
			CQ-3624	-1.2	1.4	2.4	
			CQ-3625	-1.2	1.3	2.3	
			CQ-3626	-1.5	1.4	2.5	

Table 9. Digital characteristics

Conditions (unless otherwise specified) : $T_a = 35^\circ\text{C}$, $AVDD = 5.0\text{V}$, $DVDD = 3.3\text{V}$

Parameter	Symbol	Conditions	Min.	Typ.	Max.	Units
CLKI period	t_{CLKI}		90.9	100	111.12	ns
CLKI High Pulse Width	t_{CLKIH}		$0.45 \times t_{\text{CLKI}}$	$0.5 \times t_{\text{CLKI}}$	$0.55 \times t_{\text{CLKI}}$	ns
CLKI Low Pulse Width	t_{CLKIL}		$0.45 \times t_{\text{CLKI}}$	$0.5 \times t_{\text{CLKI}}$	$0.55 \times t_{\text{CLKI}}$	ns
CLKI "↑" to DOUT data Delay	t_d			10	15	ns
High-Level Input Voltage	V_{IH}		$0.8 \times DVDD$			V
Low-Level Input Voltage	V_{IL}				$0.2 \times DVDD$	V
High-Level Output Voltage	V_{OH}	with $18\text{k}\Omega(R_{\text{LDOUT}})$	$DVDD - 0.2$			V
Low-Level Output Voltage	V_{OL}	with $18\text{k}\Omega(R_{\text{LDOUT}})$			0.2	V

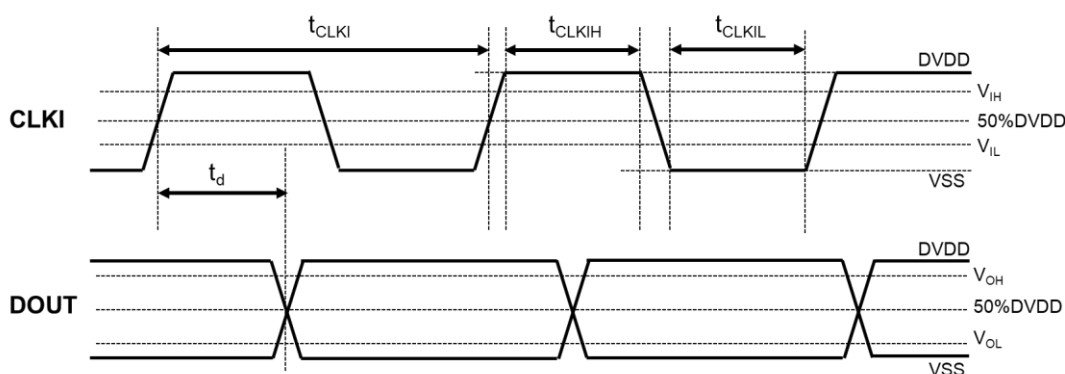


Figure 4. Data Output Timing

Note 2) These values can be drifted by long-term use or reflow process. Please check '15.Reliability Tests' for the reference of drift values.

Note 3) These parameters are guaranteed by design.

Note 4) These parameters are tested to input the equivalent current signal into IC in wafer condition. These characteristics after assembly are guaranteed by design.

Note 5) These values can be drifted by long-term use or reflow process.

Note 6) This parameter is tested for 1second at 6kV_{rms} in mass-production line for all devices.

Note 7) These parameters are defined as the drift from the values at $T_a = 35^\circ\text{C}$.

Note 8) The typical value is defined as the "average value $\pm 1\sigma$ " of the actual measurement result in a certain lot.

11. Characteristic Descriptions

11.1. Sensitivity (D_h), Zero-Current Output (D_{of}), and Linearity Error (ρ) are defined as below:

Sensitivity (D_h) is defined as the slope of the approximate straight line calculated by the least square method, using the data of output (D_{out}) when the primary current (I_{IN}) is swept within the range of linear sensing range (I_{NS}).

The output (D_{out}) when the primary current (I_{IN}) is 0A is the Zero-Current output (D_{of}).

Linearity error (ρ) is defined as the ratio of the maximum error (D_d) to the full scale (F.S. = 84%), where D_d is the maximum difference between the output (D_{out}) and the approximate straight line. Definition formula is shown as below:

$$\rho = D_d / \text{F.S.} \times 100$$

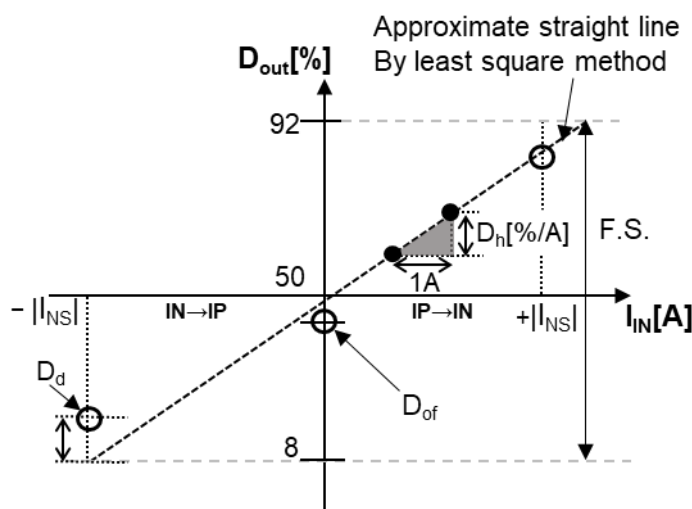


Figure 5. Characteristic definitions of CQ-362x

11.2. Total Accuracy E_{total} [%F.S.] is defined as below:

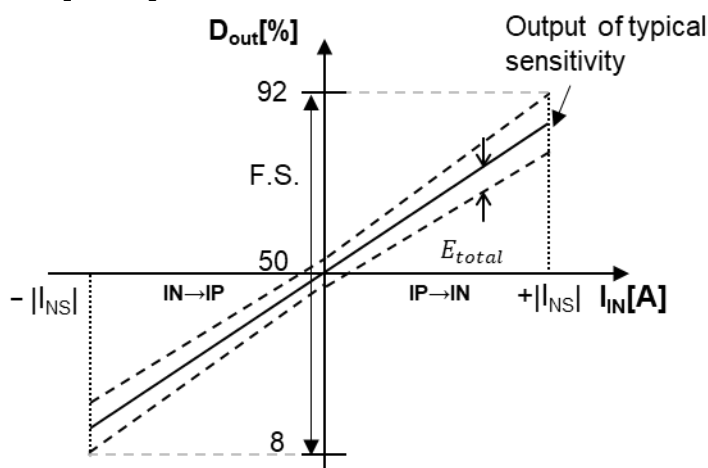


Figure 6. Total Accuracy definitions of CQ-362x

$$E_{total} = \frac{(D_{h-meas} - D_h) \times I_{NS}}{\text{F.S.}} + \frac{D_{of-d}}{\text{F.S.}} + \rho_{meas}$$

D_{h-meas} : Measured Sensitivity value [%/A]

D_h : Sensitivity (Typ.) [%/A]

D_{of-d} : Measured Temperature Drift of Zero-Current Output [%]

ρ_{meas} : Measured Linearity Error [%F.S.]

11.3. Signal-to-Noise Ratio S_{NR} [dB] is defined as below:

$$S_{NR} = 20 \times \log_{10} \left(\frac{\frac{|I_{NS}|}{\sqrt{2}}}{N_{rms}} \right) [\text{dB}]$$

N_{rms} : Noise [A_{rms}]
(with digital filter Sinc3, OSR=256, DC~10kHz, $I_{IN}=0A$)

11.4. Effective Number of Bits E_{NOB} [bits] is defined as below:

$$E_{NOB} = \frac{S_{NR} - 1.76}{6.02} [\text{bits}]$$

12. Recommended External Circuits

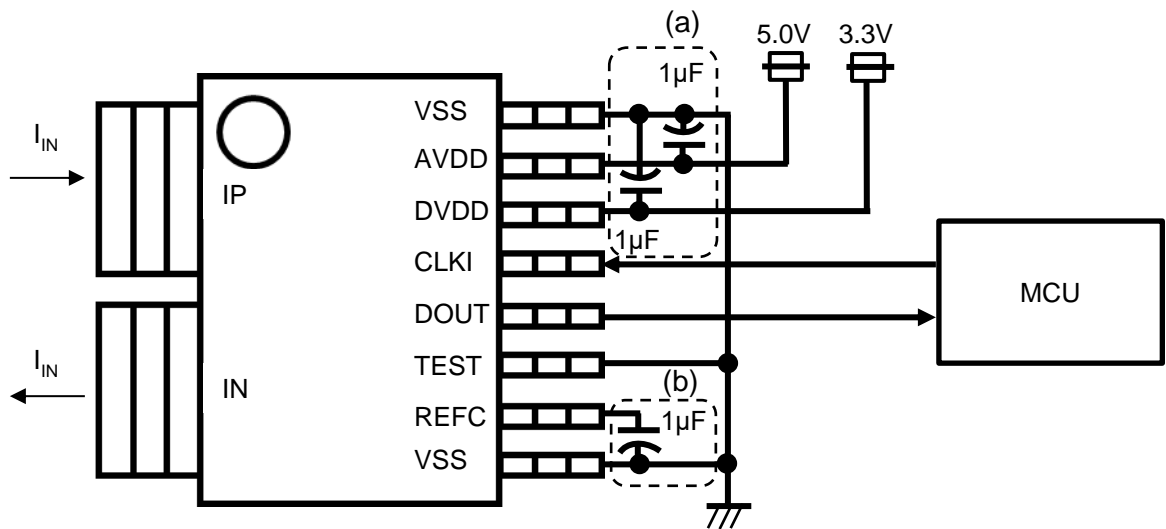


Figure 7. Recommend External Circuit of CQ-362x

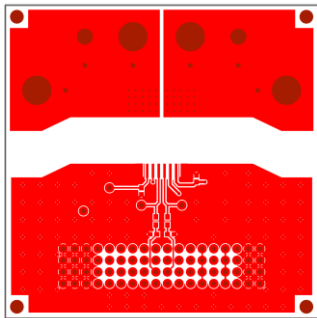
- (a) Please place a 1µF bypass capacitor as close as possible to the AVDD, DVDD, and VSS pins of the CQ-362x.
- (b) Insert a 1µF capacitor between the REFC pin and VSS for output stabilization.

13. Board Layout for Measuring Thermal Resistance

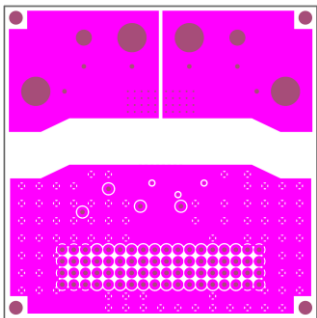
Table 10. Board information

Board Size	68.6mm×68.6mm
Layer number	4
Copper layer thickness	70µm
Board Thickness	1.6mm

• Top pattern(1st)



• Inner pattern(2nd/3rd VSS)



• Bottom pattern(4th)

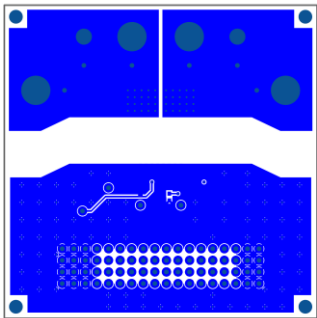
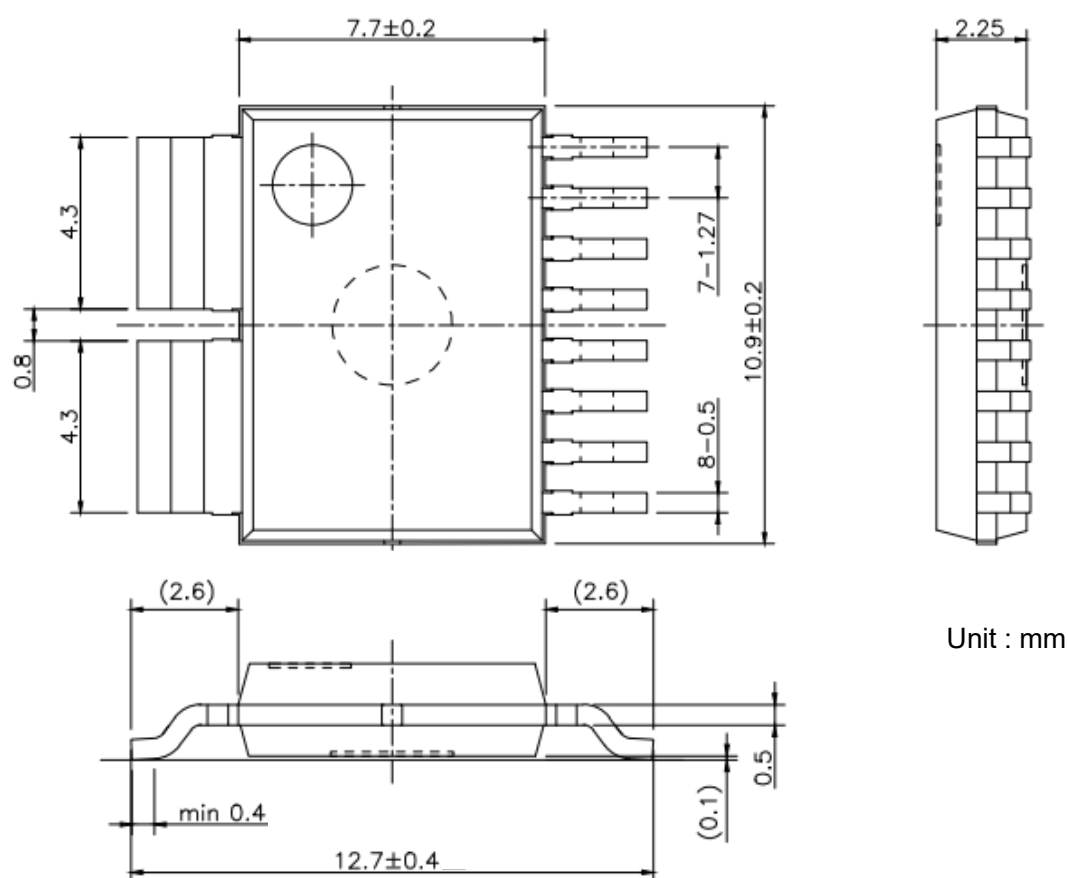


Figure 8. Board layout for measuring thermal resistance of CQ-362x

14. Package

14.1. Outline Dimensions



The tolerances of dimensions without any mention are ± 0.1 mm.

() is a reference values.

Figure 9. Outline dimensions of CQ-362x

Terminals : Cu

Plating for Terminals : Sn-Bi

Package material : RoHS compliant, halogen-free

Table 11. Isolation characteristics of CQ-362x

Parameter	Symbol	Min.	Typ.	Max.	Units
Creepage distance	Cr	8.0			mm
Clearance distance	Cl	8.0			mm

*Flammability standard is V0. (According to UL94)

*Comparative tracking index (CTI) is 400V. Material Group is II.

14.2. Standards

- IEC/UL 62368-1 Audio/video, information and communication technology equipment Part 1: Safety requirements Edition 2. (File No. E359197)
- CSA C22.2 No.62368-1-14 Audio/video, information and communication technology equipment Part 1: Safety requirements Edition 2. (File No. E359197)
- UL1577-Non-optical Isolators-Edition 5.(File No. E499004)
- CSA Component Acceptance Service No. 5A - Component Acceptance Service for Optocouplers and Related Devices (File No. E499004)

14.3. Recommended Pad Dimensions

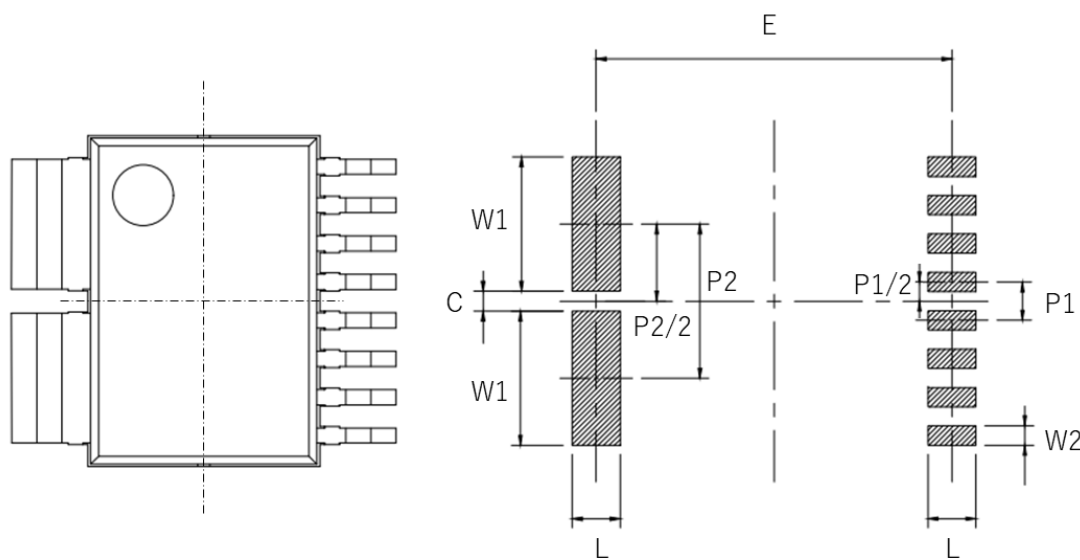


Figure 10. Recommended pad pattern

Table 12. Recommended pad dimensions

L	1.59
E	11.79
W1	4.44
W2	0.64
C	0.66
P1	1.27
P2	5.10

Unit:mm

If two or more trace layers are used as the current paths, please make enough number of through-holes to flow current between the trace layers. In order to make heat dissipation better, it is recommended that Pad on Via should be provided on the pad of the primary conductor.

14.4. Marking

Production information is printed on the package surface by laser marking. Markings consist of 11 characters excluding Asahi Kasei logo.

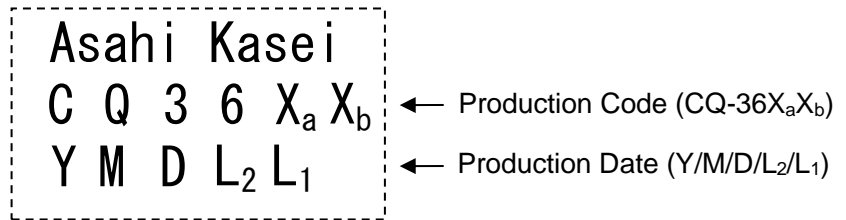


Figure 11. Markings of CQ-362x

Table 13. Production date code table

CLK frequency /Type (X _a)		Sensitivity (X _b)		Year (Y)		Month (M)		Day (D)		Lot number (L ₂ , L ₁)	
Char-acter	CLK frequency /Type	Char-acter	Sensitivity (%/A)	Char-acter	Year	Char-acter	Month	Char-acter	Day	Character	
0	20MHz/ Input	1	4.00	D	2023	C	January	1	1	0	1
1	20MHz /Output	2	2.00	E	2024	D	February	2	2	1	2
2	10MHz /Input	3	1.00	F	2025	E	March	3	3	2	3
3	10MHz /Output	4	0.700	G	2026	F	April	4	4	3	4
		5	0.500	H	2027	G	May	5	5	4	5
		6	0.250	J	2028	H	June	6	6	5	6
				K	2029	J	July	7	7	6	7
				L	2030	K	August	8	8	7	8
				N	2031	L	September	9	9	8	9
				P	2032	M	October	0	10	9	0
				R	2033	N	November	A	11	A	A
				S	2034	P	December	B	12	B	B
				T	2035			C	13	C	C
				U	2036			D	14	D	D
				V	2037			E	15	E	E
				W	2038			F	16	F	F
				X	2039			G	17	G	G
				0	2040			H	18	H	H
				1	2041			J	19	J	J
				2	2042			K	20	K	K
				3	2043			L	21	L	L
				4	2044			N	22	N	N
				5	2045			P	23	P	P
				6	2046			R	24	R	R
				7	2047			S	25	S	S
				8	2048			T	26	T	T
				9	2049			U	27	U	U
				A	2050			V	28	V	V
				B	2051			W	29	W	W
				C	2052			X	30	X	X
								Y	31	Y	Y

15. Reliability Tests

No.	Test Parameter	Test Conditions 【Reference】	n	Test Time
1	Temperature Humidity Bias Test	【JEITA EIAJ ED-4701 102】 $T_a=85^{\circ}\text{C}$, 85%RH, continuous operation	66	1000h
2	High Temperature Operating Life Test	【JEITA EIAJ ED-4701 101】 $T_a=150^{\circ}\text{C}$, continuous operation	88	1000h
3	High Temperature Storage Test	【JEITA EIAJ ED-4701 201】 $T_a=150^{\circ}\text{C}$	40	1000h
4	Low Temperature Operating Life Test	【JEITA EIAJ ED-4701 101】 $T_a=-40^{\circ}\text{C}$, continuous operation	44	1000h
5	Temperature Cycle Test	【JEITA EIAJ ED-4701 105】 $-65^{\circ}\text{C} \leftrightarrow +150^{\circ}\text{C}$ 30min. \leftrightarrow 30min. Tested in vapor phase	100	500cycle

Tested samples are pretreated as below before each reliability test:

Desiccation: $125^{\circ}\text{C}/24\text{h} \rightarrow$ Moisture Absorption: $60^{\circ}\text{C}/60\%\text{RH}/168\text{h}$

\rightarrow Reflow: 3 times (JEDEC Level 2a)

Criteria:

Products whose drifts between before pretreated and after the reliability tests do not exceed the values below are considered to be in spec.

Sensitivity D_h ($T_a=35^{\circ}\text{C}$)	: Within $\pm 2.5\%$
Linearity Error ρ ($T_a=35^{\circ}\text{C}$)	: Within $\pm 0.24\%\text{F.S.}$
EEPROM data	: Unchanged
Zero-Current Output D_{of} ($T_a=35^{\circ}\text{C}$)	: As shown in the below

Part number	Zero-Current Output D_{of} ($T_a=35^{\circ}\text{C}$)
CQ-3621	Within $\pm 0.60\%\text{F.S.}$
CQ-3622	Within $\pm 0.27\%\text{F.S.}$
CQ-3623	Within $\pm 0.18\%\text{F.S.}$
CQ-3624	Within $\pm 0.13\%\text{F.S.}$
CQ-3625	Within $\pm 0.13\%\text{F.S.}$
CQ-3626	Within $\pm 0.13\%\text{F.S.}$

16. Precautions

<Storage Environment>

Products should be stored at an appropriate temperature, and at as low humidity as possible by using desiccator (5 to 35°C). It is recommended to use the products within 4 weeks since packing was opened. Keep products away from chlorine and corrosive gas. When stored in an inappropriate environment, it can affect the product properties.

<Long-term Storage>

Long-term storage may result in poor lead solderability and degraded electrical performance even under proper conditions. For those parts, which stored long-term should be checked as for solderability before it is used.

For storage longer than 1 year, it is recommended to store in nitrogen atmosphere. Oxygen of atmosphere oxidizes leads of products, and lead solderability get worse.

<Other Precautions>

- 1) This product should not be used under the environment with corrosive gas including chlorine or sulfur.
- 2) This product is lead (Pb) free. All leads are plated with Sn-Bi. Do not store this product alone in high temperature and high humidity environment. Moreover, this product should be mounted on substrate within six months after delivery.
- 3) This product is damaged when it is used on the following conditions:
 - Supply voltage is applied in the opposite way.
 - Overvoltage which is larger than the value indicated in the specification.
- 4) This product will be damaged if it is used for a long time with the current (effective current) which exceeds the current rating. Careful attention must be paid so that maximum effective current is smaller than current rating.
- 5) The characteristics can be changed by the influences of nearby current and magnetic field and electric field. Please make sure of the mounting position.

As this product contains gallium arsenide, observe the following procedures for safety.

- 1) Do not alter the form of this product into a gas, powder, liquid, through burning, crushing, or chemical processing.
- 2) Observe laws and company regulations when discarding this product.

17. Revision History

Date (Y/M)	Revision	Page	Contents
25/01	00	19	
25/09	01	4	Revised the Compensation section
		7	Revised the notes Corrected the Linearity Error values Revised the Response time condition
		12	Corrected the units for Noise and ENOB

IMPORTANT NOTICE

0. Asahi Kasei Microdevices Corporation ("AKM") reserves the right to make changes to the information contained in this document without notice. When you consider any use or application of AKM product stipulated in this document ("Product"), please make inquiries the sales office of AKM or authorized distributors as to current status of the Products.
1. All information included in this document are provided only to illustrate the operation and application examples of AKM Products. AKM neither makes warranties or representations with respect to the accuracy or completeness of the information contained in this document nor grants any license to any intellectual property rights or any other rights of AKM or any third party with respect to the information in this document. You are fully responsible for use of such information contained in this document in your product design or applications. **AKM ASSUMES NO LIABILITY FOR ANY LOSSES INCURRED BY YOU OR THIRD PARTIES ARISING FROM THE USE OF SUCH INFORMATION IN YOUR PRODUCT DESIGN OR APPLICATIONS.**
2. The Product is neither intended nor warranted for use in equipment or systems that require extraordinarily high levels of quality and/or reliability and/or a malfunction or failure of which may cause loss of human life, bodily injury, serious property damage or serious public impact, including but not limited to, equipment used in nuclear facilities, equipment used in the aerospace industry, medical equipment, equipment used for automobiles, trains, ships and other transportation, traffic signaling equipment, equipment used to control combustions or explosions, safety devices, elevators and escalators, devices related to electric power, and equipment used in finance-related fields. Do not use Product for the above use unless specifically agreed by AKM in writing.
3. Though AKM works continually to improve the Product's quality and reliability, you are responsible for complying with safety standards and for providing adequate designs and safeguards for your hardware, software and systems which minimize risk and avoid situations in which a malfunction or failure of the Product could cause loss of human life, bodily injury or damage to property, including data loss or corruption.
4. Do not use or otherwise make available the Product or related technology or any information contained in this document for any military purposes, including without limitation, for the design, development, use, stockpiling or manufacturing of nuclear, chemical, or biological weapons or missile technology products (mass destruction weapons). When exporting the Products or related technology or any information contained in this document, you should comply with the applicable export control laws and regulations and follow the procedures required by such laws and regulations. The Products and related technology may not be used for or incorporated into any products or systems whose manufacture, use, or sale is prohibited under any applicable domestic or foreign laws or regulations.
5. Please contact AKM sales representative for details as to environmental matters such as the RoHS compatibility of the Product. Please use the Product in compliance with all applicable laws and regulations that regulate the inclusion or use of controlled substances, including without limitation, the EU RoHS Directive. AKM assumes no liability for damages or losses occurring as a result of noncompliance with applicable laws and regulations.
6. Resale of the Product with provisions different from the statement and/or technical features set forth in this document shall immediately void any warranty granted by AKM for the Product and shall not create or extend in any manner whatsoever, any liability of AKM.
7. This document may not be reproduced or duplicated, in any form, in whole or in part, without prior written consent of AKM.